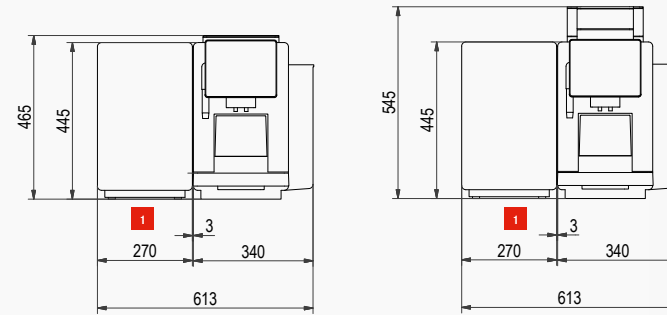


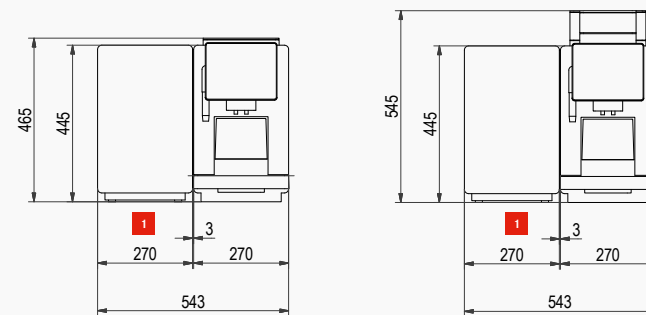
TECHNICAL DATA

MACHINE MODELS

| | |
|---|--|
| Model | Power |
| A300 | 220-240 V 1LNPE 50/60 Hz 2.1-2.3 kW (10 A) |
| A300 MS EC | 220-240 V 1LNPE 50/60 Hz 2.1-2.3 kW (10 A) |
| A300 FM EC | 220-240 V 1LNPE 50/60 Hz 2.1-2.3 kW (10 A) |
| Dimensions with water tank | Without hopper extension, without powder dosing system 340 mm / 465 mm / 587 mm (W / H / D) With hopper extension, with powder dosing system 340 mm / 545 mm / 587 mm (W / H / D) |
| Dimensions with water connection | Without hopper extension, without powder dosing system 270 mm / 465 mm / 587 mm (W / H / D) With hopper extension, with powder dosing system 270 mm / 545 mm / 587 mm (W / H / D) |
| Weight (empty) | approx. 25 kg |



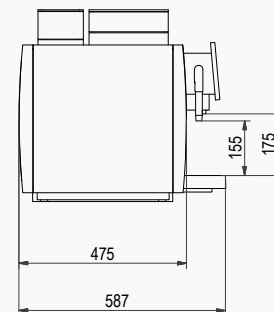
Option with internal water tank



Option with water connection

WATER CONNECTION

| | |
|-------------------------------|---|
| Fixed water connection | Metal hose with union nut G3/8", L = 1500 mm |
| Water supply line | If possible on installation side: untreated water of drinking water quality (not from household decalcification system) |
| Water pressure | 80-800 kPa (0.8-8.0 bar) |
| Flowrate | >0.1l/sec |
| Water temperature | <25°C |
| Total hardness | 4-8 °dH GH (German total hardness) / 7-14 °fH GH (French total hardness) / 70-140 ppm (mg/l) |
| Carbonate hardness | 3-6 °dH KH (carbonate hardness) / 50-105 ppm (mg/l) |
| Acid content/pH value | 6.5-7.5 pH |
| Chlorine content | <0.5 mg/l |

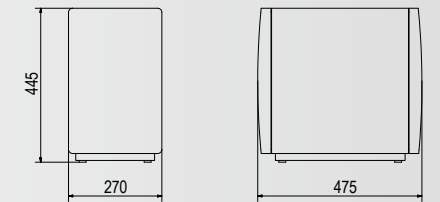


WATER DRAIN

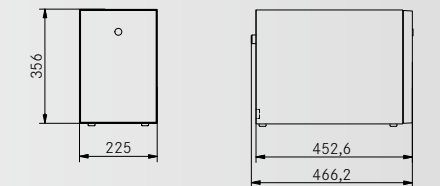
| | |
|-------------------|---------------------------|
| Drain hose | Dia. = 16 mm, L = 2000 mm |
|-------------------|---------------------------|

ADD-ON UNITS

| | |
|------------------------------|--|
| REFRIGERATION UNIT | SU05 EC (5 I) |
| Electrical connection | 220-240 V 1LNPE 50/60 Hz 0.72 A (10 A) |
| Dimensions | 270 mm / 445 mm / 475 mm (W / H / D) |
| Weight (empty) | approx. 20 kg |
| Compatible with | Model A300 MS EC / A300 FM EC |
| Color | Black |



| | |
|------------------------------|--|
| REFRIGERATION UNIT | KE200 (4 I) |
| Electrical connection | 220-240 VAC, 1L N PE, 82 W, 10 A, 50-60 Hz |
| Dimensions | 225 mm / 356 mm / 453 mm (W / H / D) |
| Weight (empty) | approx. 13 kg |
| Compatible with | Model A300 MS EC / A300 FM EC |
| Color | Stainless steel |



| | |
|------------------------------|--------------------------------------|
| ACCOUNTING SYSTEM | AC125CL |
| Electrical connection | 85-264V 1LNPE 50/60 Hz (10A) |
| Dimensions | 125 mm / 150 mm / 310 mm (W / H / D) |
| Weight (empty) | approx. 2 kg |
| Color | Black |

