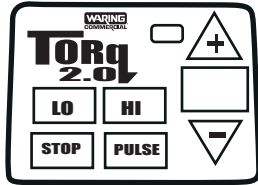


Unit Information

2 HP – 1500 watt – 24,000 Max RPM

48 oz. Stackable
Break Resistant Container

Limited 2 Year Warranty



035236

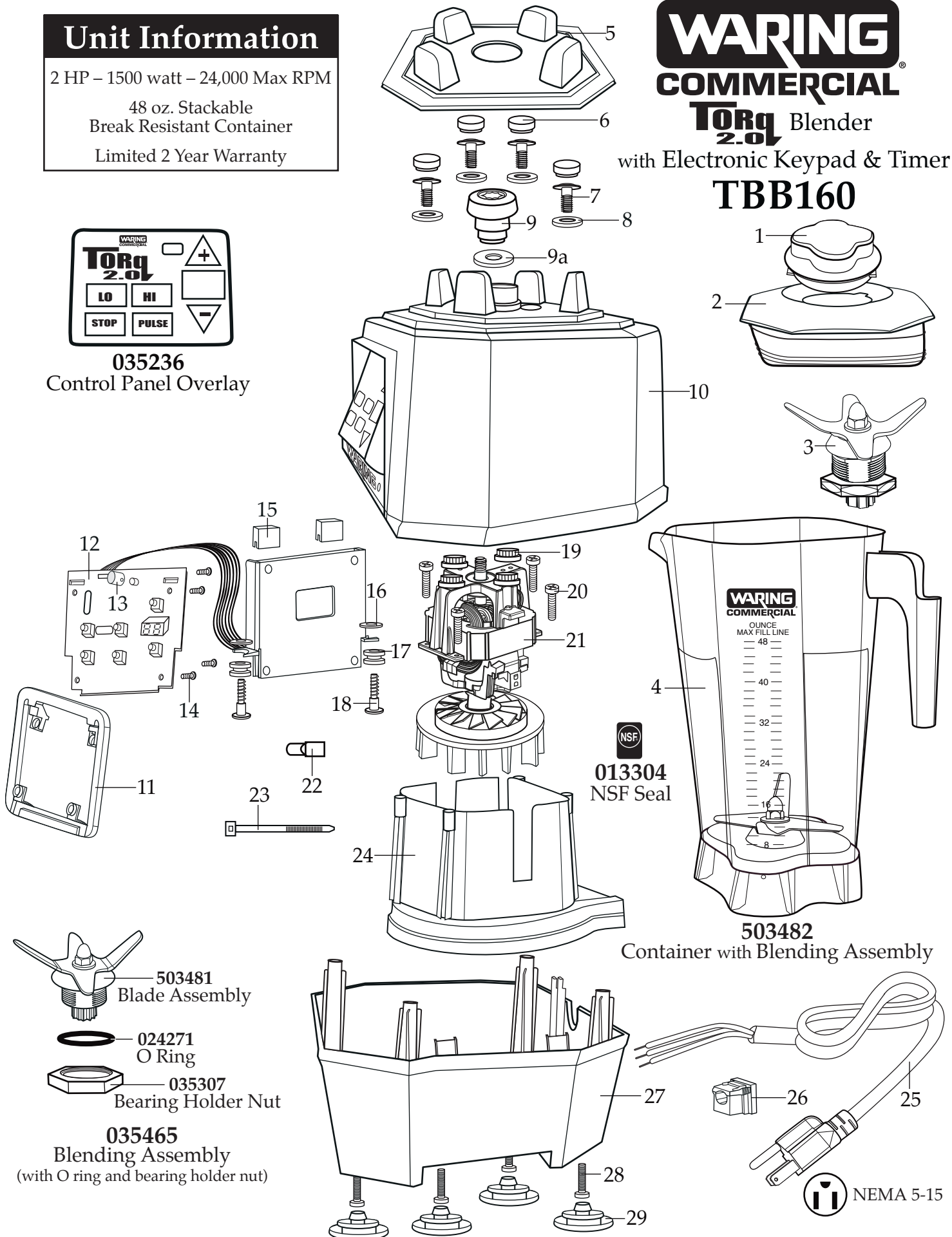
Control Panel Overlay

WARING COMMERCIAL

TORq 2.0

Blender
with Electronic Keypad & Timer

TBB160



- 503481**
Blade Assembly
- 024271**
O Ring
- 035307**
Bearing Holder Nut

035465
Blending Assembly
(with O ring and bearing holder nut)

NSF
013304
NSF Seal

503482
Container with Blending Assembly

NEMA 5-15

Illustration #	Part #	Description
1	028769-E	Eastman Jar Lid Cover
2	035238-V	Vinyl Jar Lid
3	035465	Blending Assembly (with O ring and bearing holder nut)
4	035239	48 oz. Stackable Container ONLY
5	035885 035091	Jar Pad (<i>changed after 8/2/2018</i>) Jar Pad (use 035885)
6	035085	Hole Plug (4 required)
7	034275	Sems (4 required)
8	034273	B Gasket (4 required)
9	037034 035251	Drive Coupling Machined (<i>on units after 9/19/2019</i>) Drive Coupling
9a	037033	Coupling Washer (<i>on units after 9/19/2019</i>)
10	503460-160	Top Housing Assembly
11	035237	Control Housing Back Bezel
12	035162	TBB160 Control Panel Assembly
13	035253	LED Lens
14	035090	Screw (4 required)
15	034900	PCB Cushion (2 required)
16	013604	Washer (2 required)
17	034904	Rubber Pad (2 required)
18	034902	Sems (2 required)
19	034272	A Gasket (4 required)
20	034274	Screw (4 required)
21	034276	ECM Motor / KB500
22	012409	Small Crimp Connectors (2 required <i>on units after 11/22/2016</i>) (4 required)
	019123	Large Crimp Connector (2 required <i>on units after 11/22/2016</i>) (1 required)
23	013731	Cable Ties (6 required <i>on units after 11/22/2016</i>) - (2 required)
24	503483	Motor Housing with Dampeners
25	035124 026925	Cordset (<i>on units after 4/25/2016</i>) Cordset
26	033619 007556	Strain Relief (<i>on units after 4/25/2016</i>) Strain Relief

Illustration # Part # Description

27	503480 035079	Bottom Housing & Feet Bottom Housing ONLY
28	034274	Screw (4 required)
29	035088	Foot (4 required)

