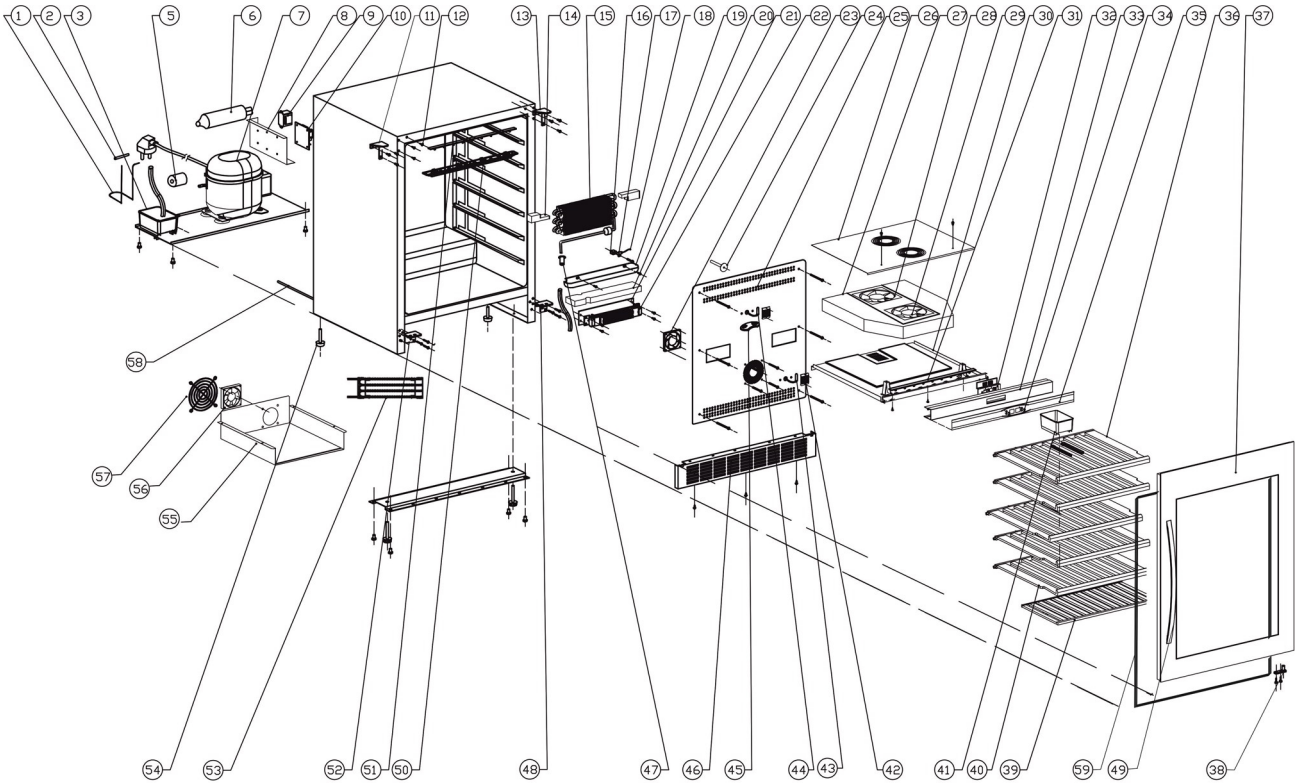


16113 / TFW160-2F

| Position | ItemNo | Description |
|----------|--------|--------------------------|
| 01 | 14224 | Evaporating Tube |
| 03 | 11597 | Water Tank |
| 05 | 12558 | Anti-Vibration Gasket |
| 06 | 15703 | Filter Drier |
| 07 | 11743 | Compressor JT1080Y |
| 08 | 13880 | PCB Cover |
| 09 | 13714 | Transformer |
| 10 | 13877 | PCB Board |
| 11 | 12973 | Top Hinge Left |
| 12 | 10046 | Decorative Nail |
| 13 | 12985 | Top Hinge Right |
| 14 | 33620 | Evaporator Foam |
| 15 | 14250 | Evaporator |
| 16 | 15154 | Stop For Shelves |
| 17 | 13725 | Wire Clamp |
| 18 | 13800 | Cabinet Sensor |
| 19 | 11486 | Drip Tray |
| 21 | 33621 | Heater Board |
| 22 | 13288 | PTC Heater |
| 23 | 13575 | Heater Fan |
| 24 | 33622 | Spacer |
| 25 | 14382 | Evaporator Cover |
| 26 | 13505 | Fan Cover |
| 27 | 11178 | Middle Bridge Foam |
| 28 | 13436 | Evaporator Fan Dc1225S |
| 29 | 13436 | Evaporator Fan Dc1225S |
| 30 | 11176 | Middle Bridge |
| 31 | 15664 | Lower LED Light |
| 32 | 13860 | Display Holder |
| 33 | 13861 | Display Support |
| 34 | 13604 | Button |
| 35 | 10431 | Display Cover |
| 36 | 15252 | Wooden Shelf A6A (Top) |
| 37 | 12231 | Frameless Glass Door |
| 38 | 12813 | Door Hinge Pin Left |
| | 12814 | Door Hinge Pin Right |
| 39 | 15254 | Wooden Shelf G (Bottom) |
| 40 | 15251 | Wooden Shelf A6 (Middle) |
| 41 | 11617 | Water Tray Clear |
| 42 | 13801 | Cabinet Sensor Cover |
| 43 | 14456 | Evaporator Sensor |
| 44 | 14456 | Evaporator Sensor |
| 45 | 10009 | Charcoal Filter |
| 46 | 10826 | Bottom Grill Hexagonal |
| 48 | 12769 | Bottom Hinge Right |
| 49 | 12675 | Handle |
| 50 | 15533 | LED Cover |
| 51 | 15683 | Upper LED |
| 52 | 12758 | Bottom Hinge Left |
| 53 | 14112 | Condenser |
| 54 | 14554 | Adjustable Feet |
| 55 | 14177 | Condenser Cover |
| 56 | 13363 | Condenser Fan Dc1225B |
| 57 | 13504 | Fan Cover |
| 58 | 15740 | Air Valve |
| 59 | 12584 | Gasket |

16113 / TFW160-2F



| | |
|------------------|--------------|
| TEFCOLD | Date: 201208 |
| Model: TFW160-2F | Rev. no.: 02 |
| Exploded view | Rev. by: rfj |
| Drawing no.: | |