

# NOBILIS

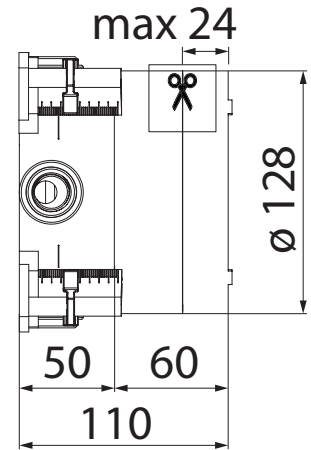
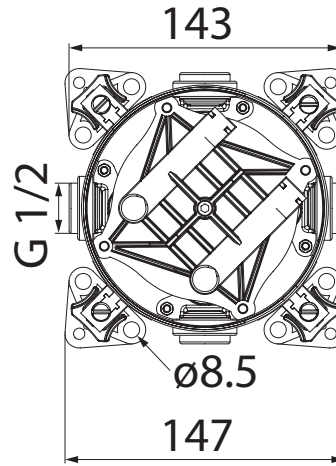
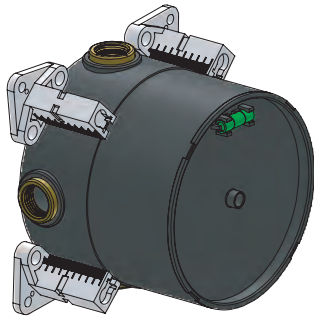
## ISTRUZIONI / INSTRUCTIONS

### DOCCIA TERMOSTATICO 2 VIE ON-OFF

### THERMOSTATIC SHOWER 2 WAYS ON-OFF



PARTE INCASSO / PART BUILT  
WE00202



PARTE ESTERNA TERMOSTATICO 2 VIE  
2-WAY THERMOSTATIC EXTERNAL PART



WE00202/ECR

CROMO / CHROME



WE00202/EWCR

CROMO con VETRO BIANCO  
CHROME with WHITE GLASS

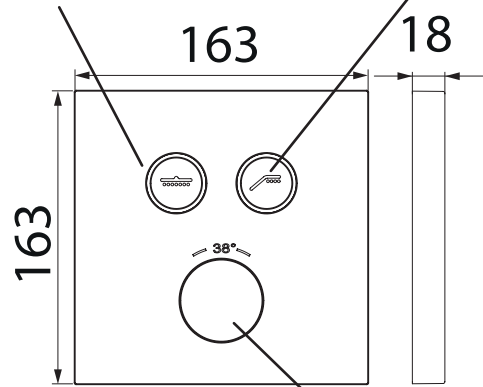


WE00202/EBCR

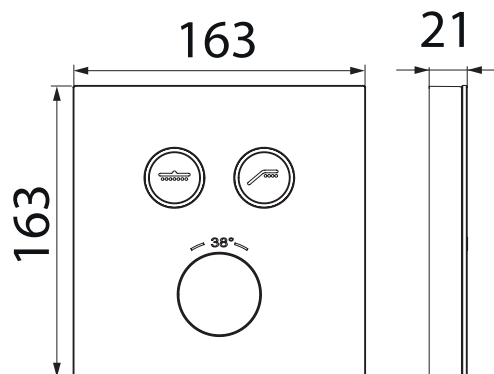
CROMO con VETRO NERO  
CHROME with BLACK GLASS

MANOPOLA SOFFIONE  
KNOB SHOWER HEAD

MANOPOLA DOCCETTA  
KNOB SHOWER



MANIGLIA TERMOSTATICA  
con fermo 38°C  
THERMOSTATIC HANDLE  
with stop 38 °C



## FUNZIONAMENTO / OPERATION

Premendo il pulsante doccia, l'acqua fuoriesce dall'uscita della doccetta. Il pulsante, che in posizione di chiusura rimane a filo, durante l'apertura rimane invece esterno, così che possa essere usato come una maniglia. In posizione standard, il pulsante apre subito a portata massima.

Girandolo in senso antiorario si ha una diminuzione dell'acqua da 20 a 8 litri /min (pressione 3 bar) con rotazione di 90°.

Ripremendo il pulsante, chiude il flusso dell'acqua.

Lo stesso funzionamento si ha con il pulsante soffione.

Le due valvole sono INDIPENDENTI l'una dall'altra.

Per cui si può aprire doccia e/o soffione, controllandole separatamente compreso i flussi.

By pressing the shower button, the water comes out of the shower outlet. The button, which in the closed position remains flush, during opening instead it remains external, so that it can be used as a handle.

In the standard position, the button opens immediately at maximum range.

Turning it counterclockwise reduces the water from 20 to 8 liters / min (pressure 3 bar) with 90 ° rotation.

By pressing the button again, it closes the water flow.

The same operation occurs with the shower head button.

The two valves are INDEPENDENT of each other.

So you can open the shower and / or shower head, controlling them separately including flows.



L'uso è semplice e intuitivo, garantisce sempre un getto d'acqua costante e una miscelazione precisa. Il design essenziale con pulsanti a scomparsa, lo rendono unico nel suo genere.

Premendo il pulsante risulta morbido come un interruttore di una luce.

---

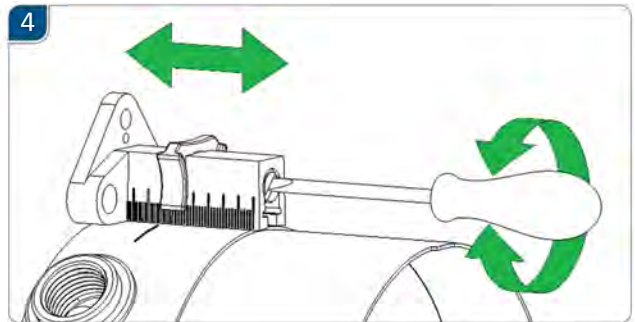
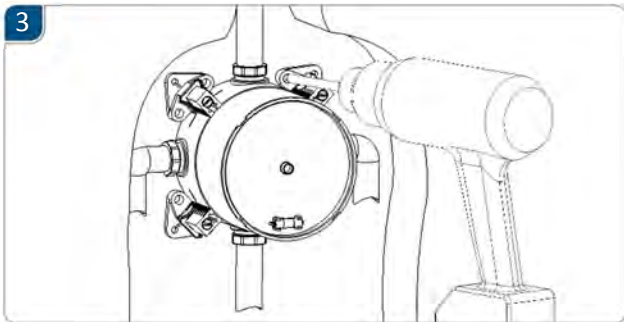
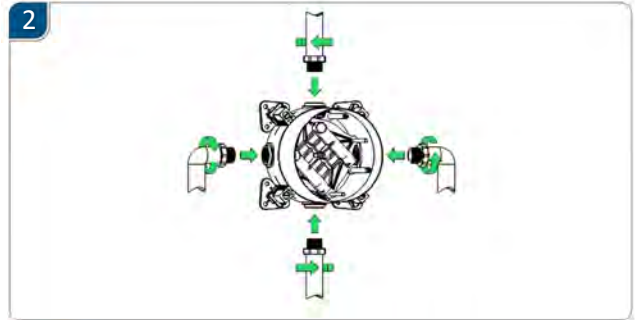
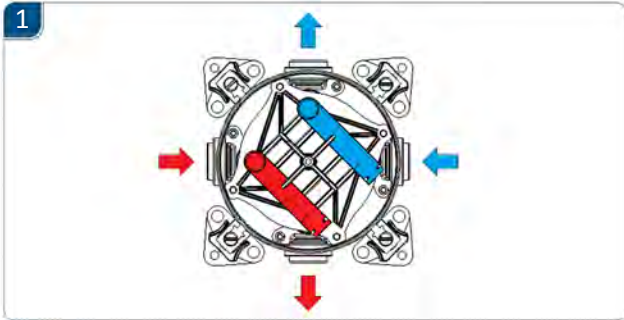
Use is simple and intuitive, it always guarantees a constant jet of water and precise mixing. The essential design with retractable buttons, make it one of a kind. Pressing the button turns out soft as a one light switch.



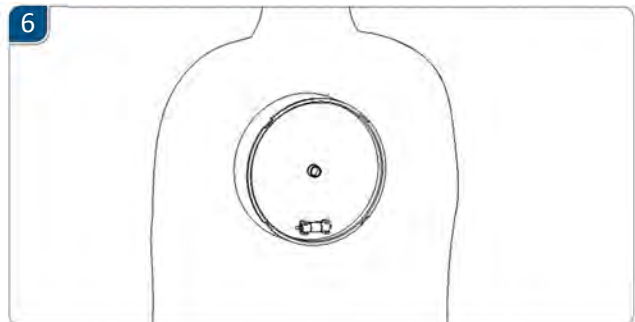
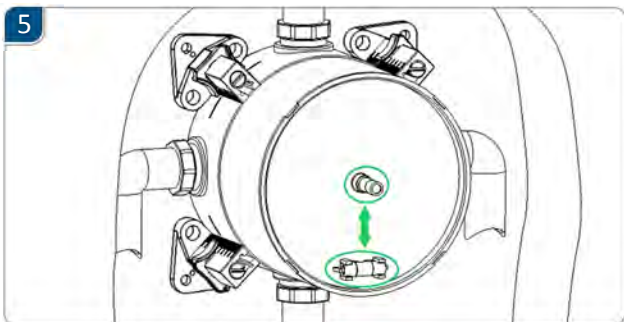
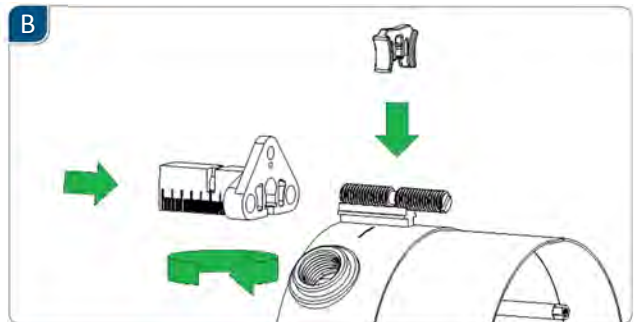
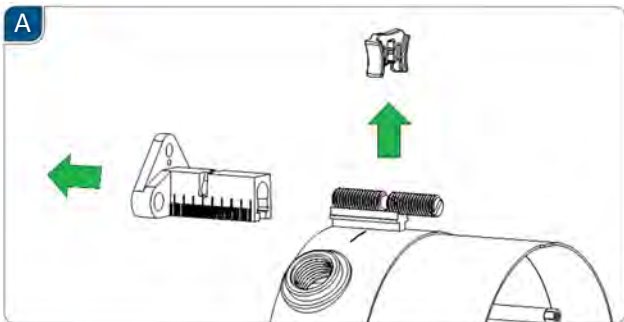
Tutti i miscelatori termostatici vengono collaudati posizionando temperatura a 38° tramite pulsante di sicurezza: qualora viene desiderata una temperatura più elevata spingendo il bottone e ruotando in senso antiorario la maniglia si possono ottenere temperature maggiori.

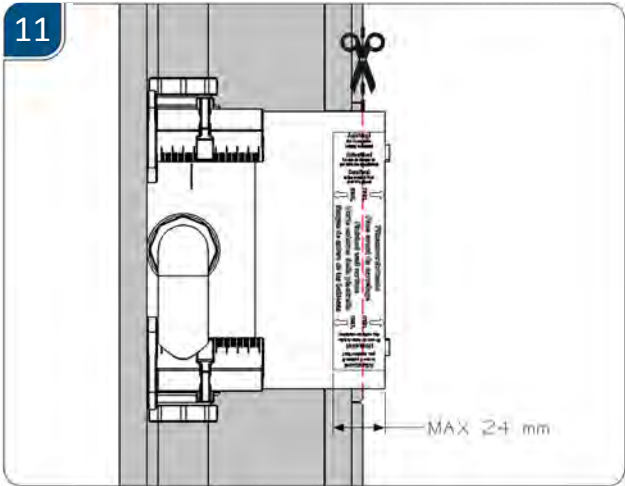
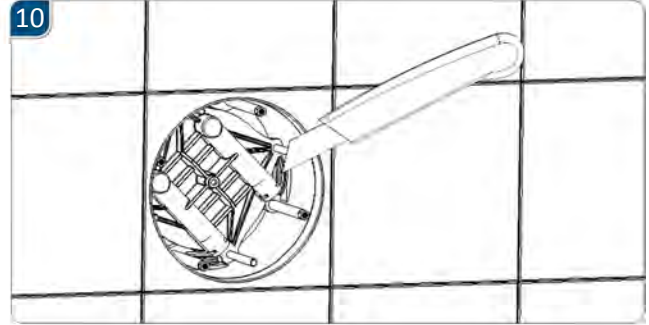
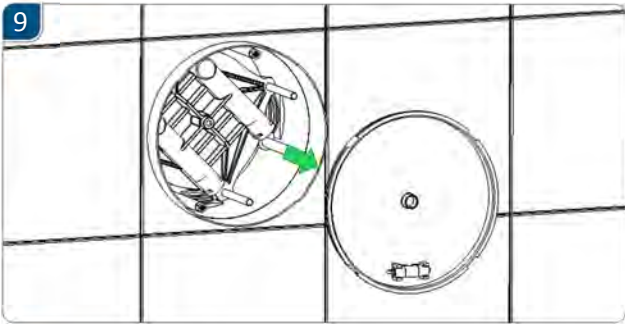
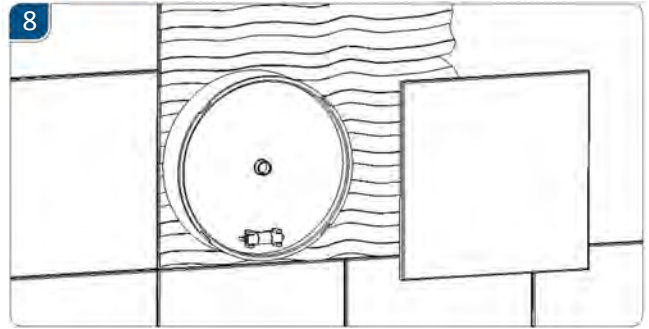
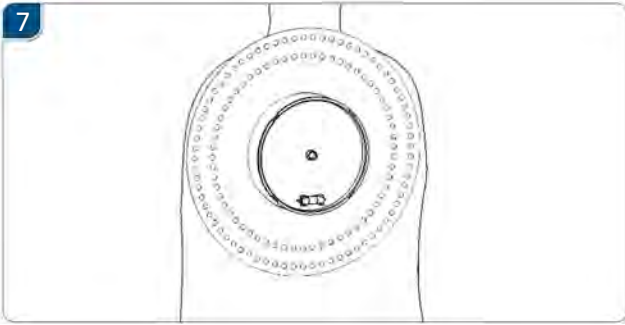
---

All thermostatic mixers are tested by positioning the temperature at 38 ° by means of a button safety: when a temperature is desired higher by pushing the button and turning it in the direction counterclockwise the handle can get temperatures major.



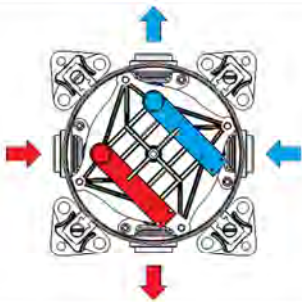
**For plasterboard application remove the clips and turn the supports backwards**



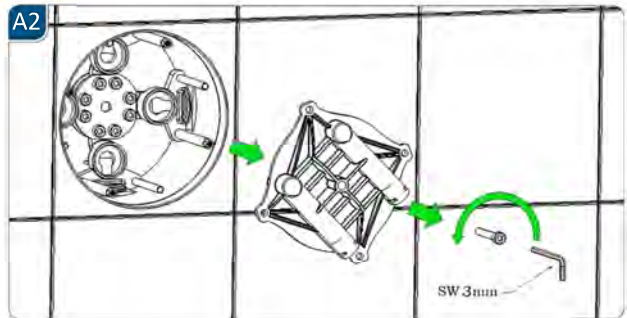


## To purge both ways.

A1

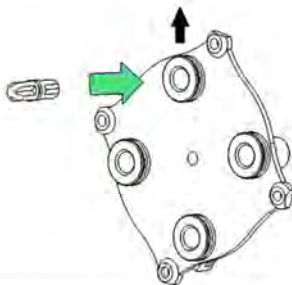


A2

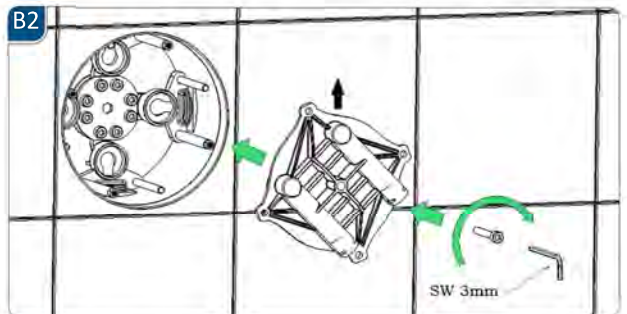


## To purge only one way.

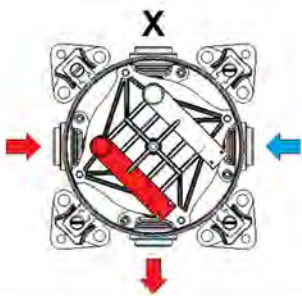
B1



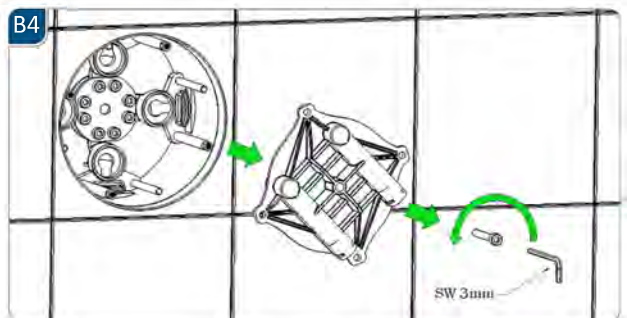
B2

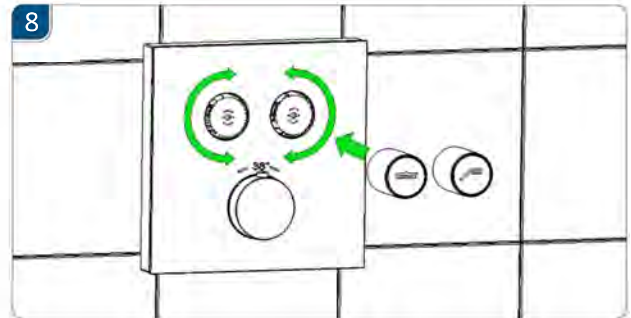
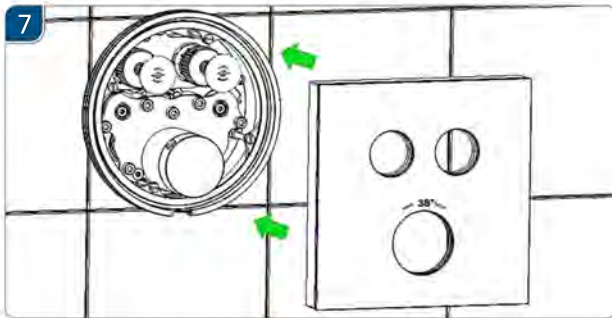
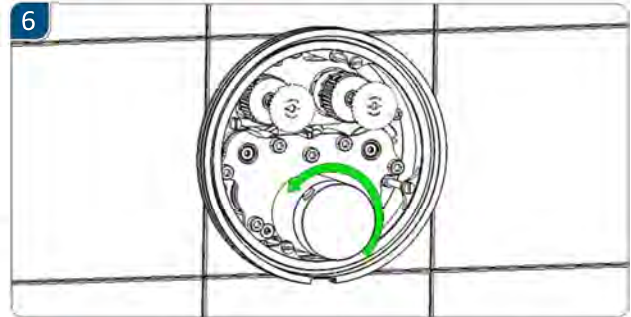
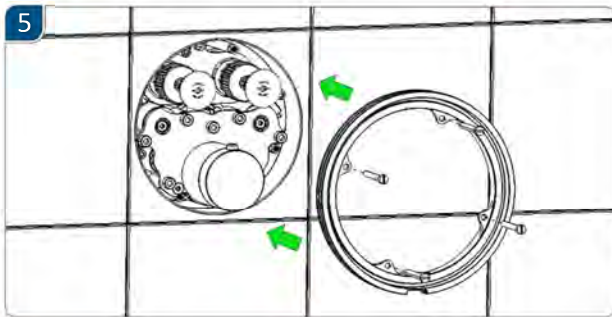
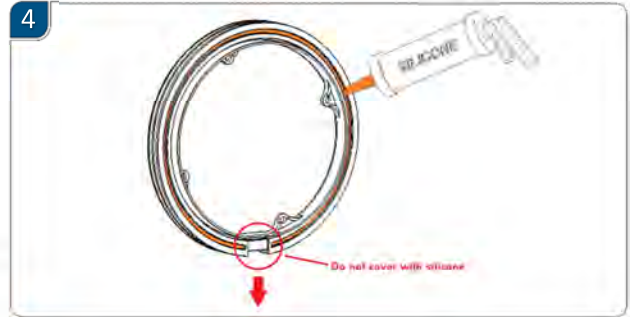
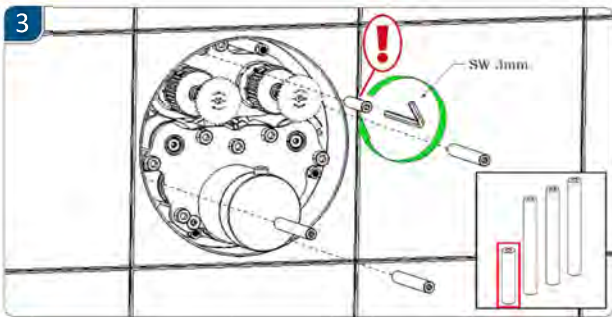
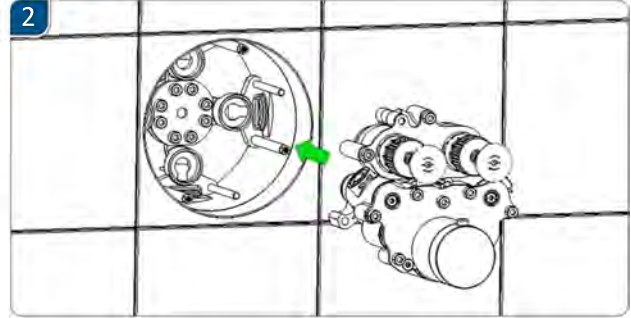
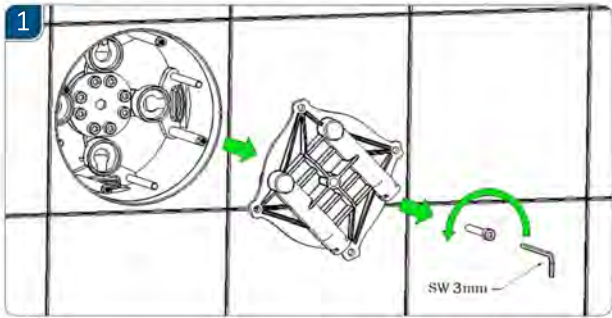
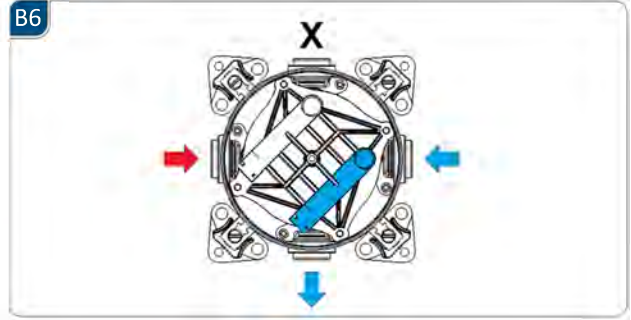
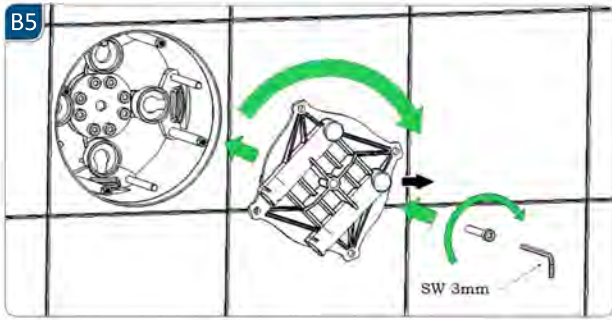


B3



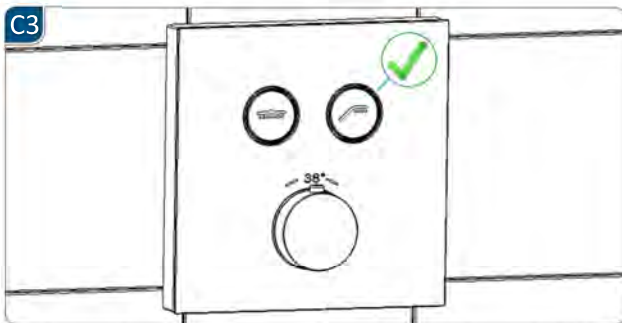
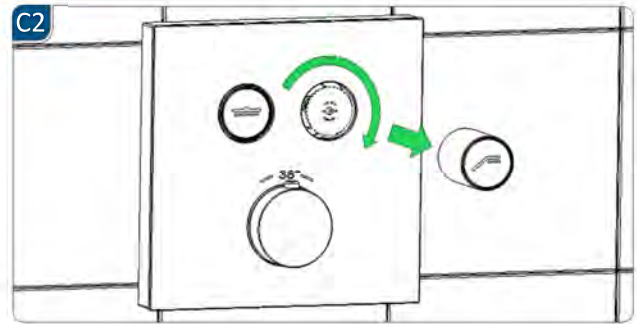
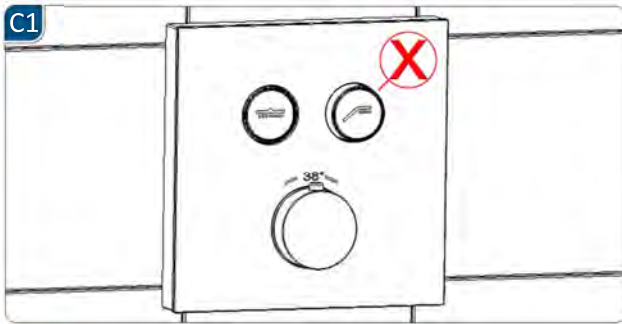
B4



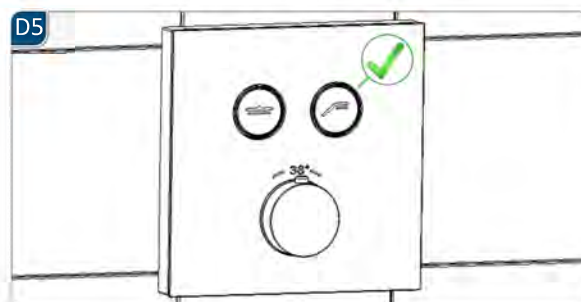
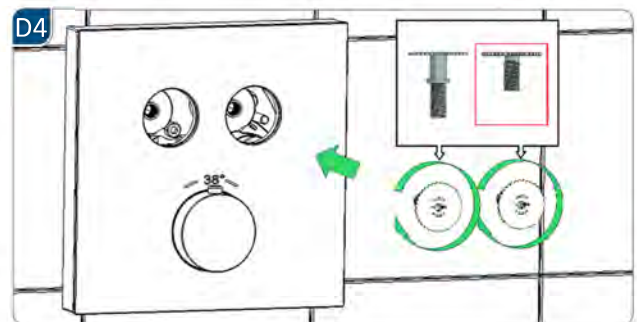
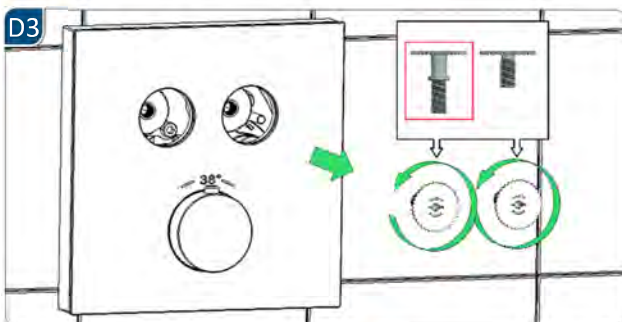
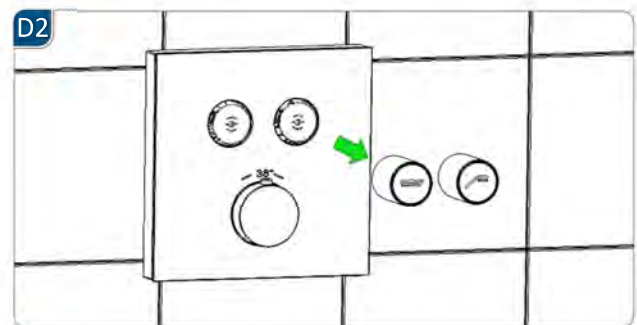
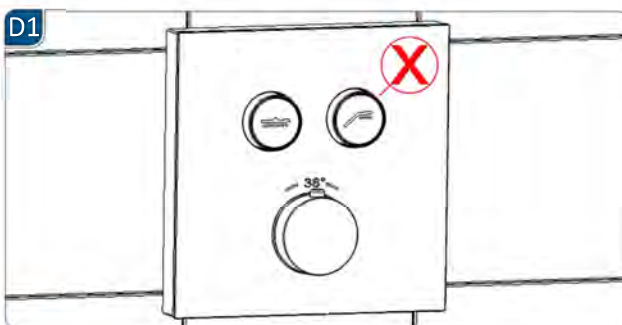





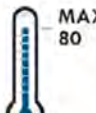

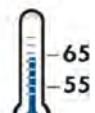




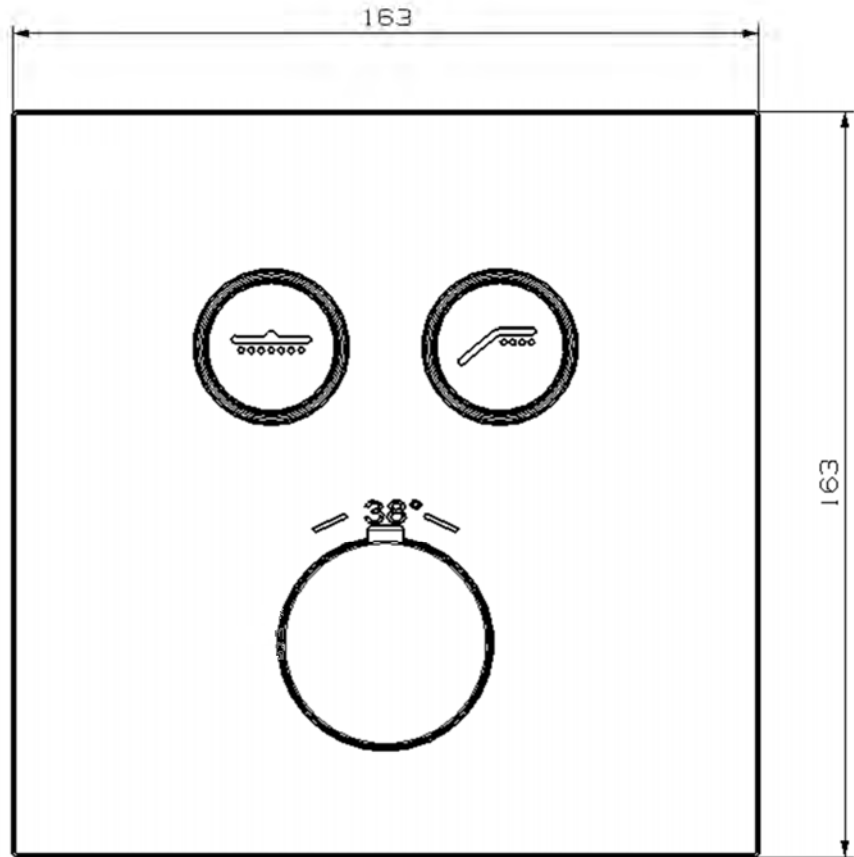
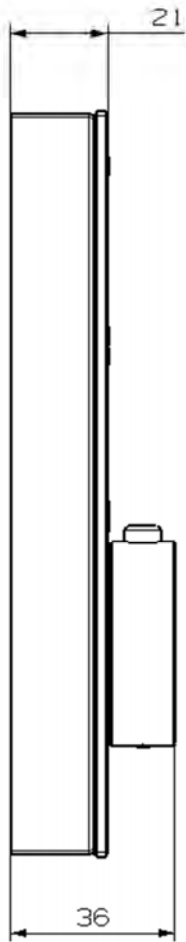
## First case.



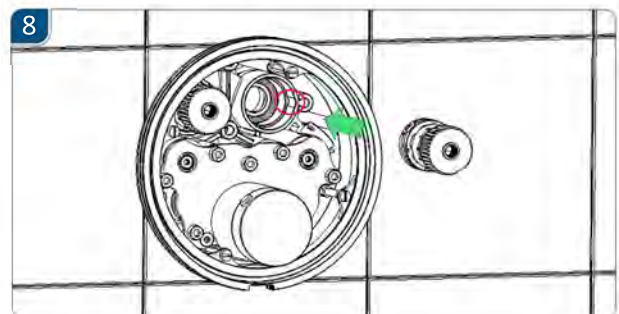
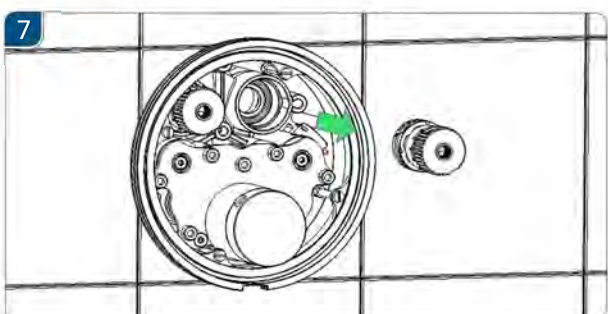
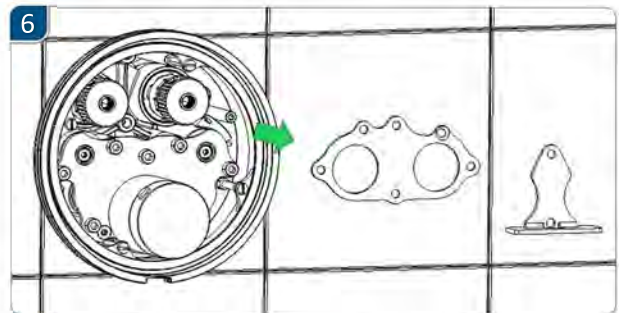
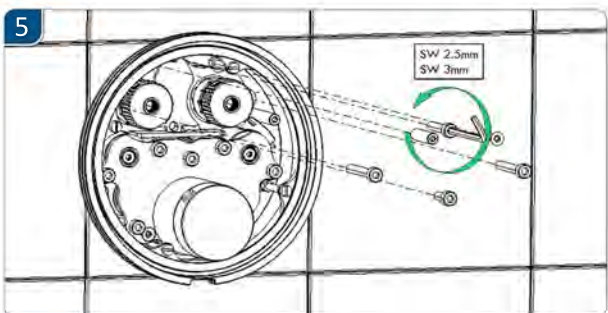
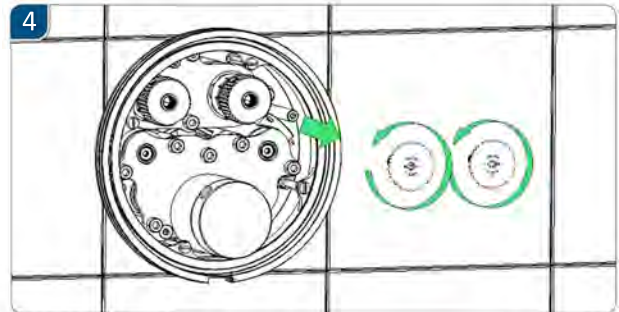
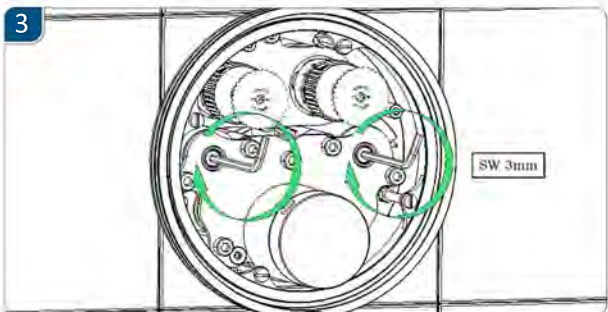
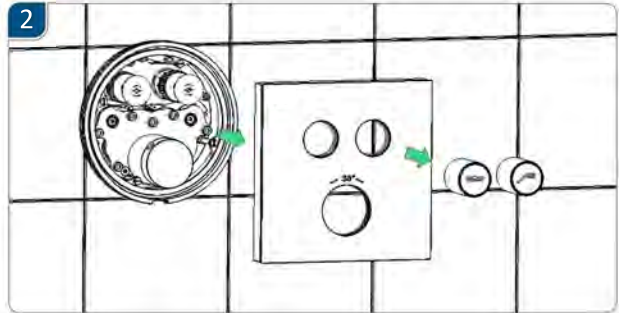
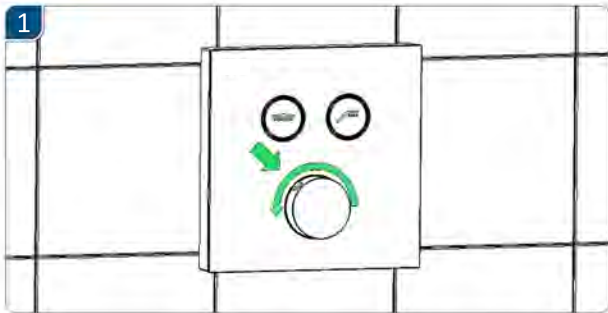
## Second case.

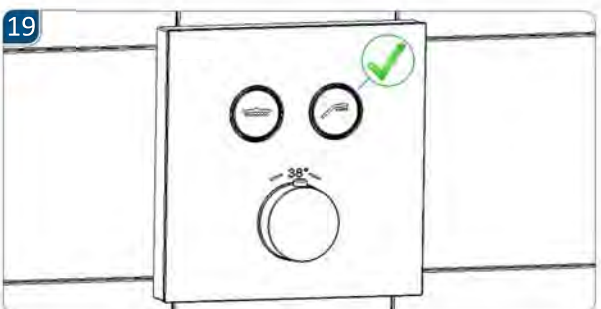
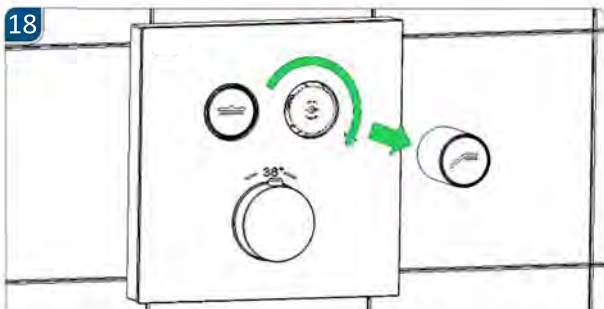
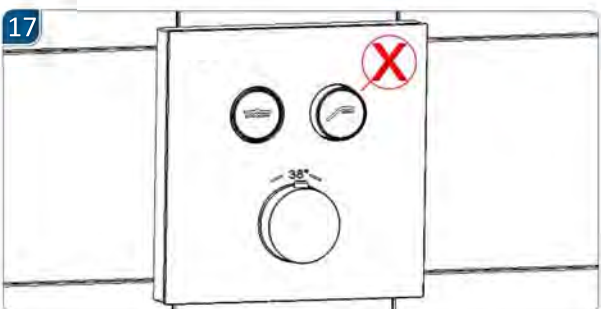
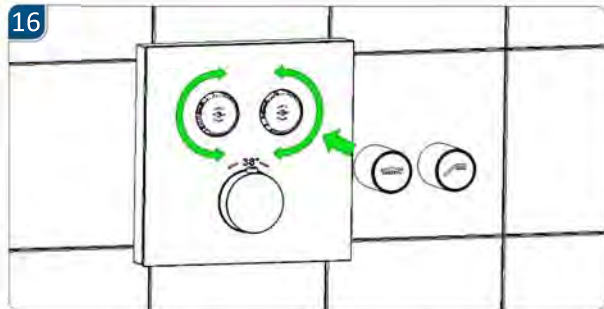
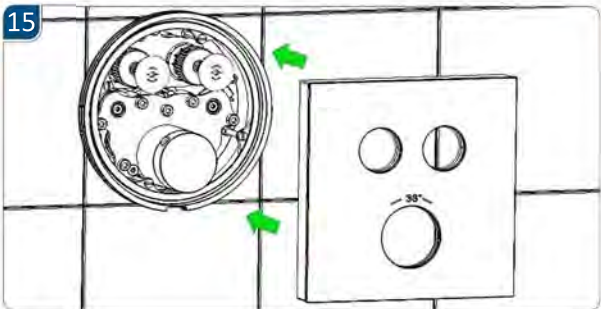
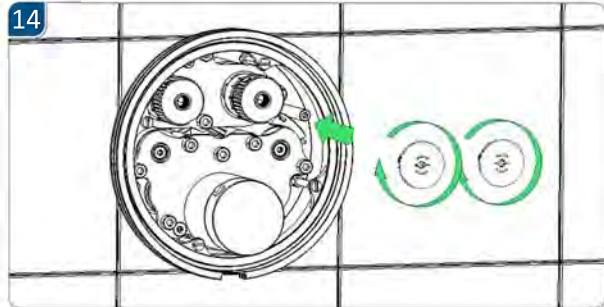
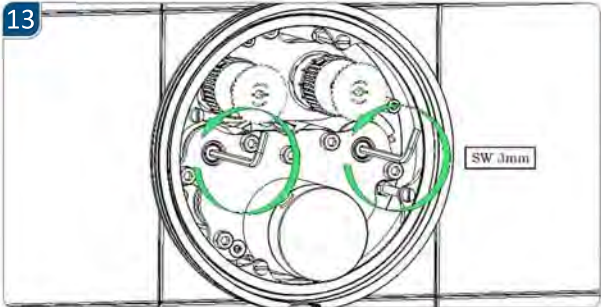
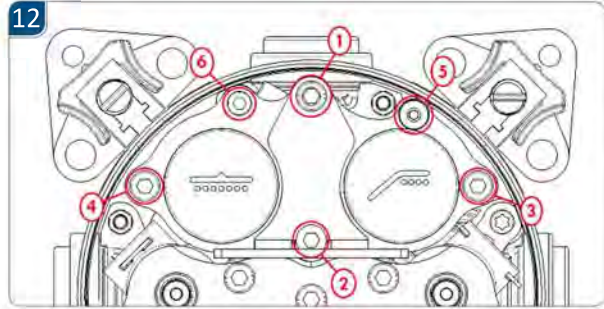
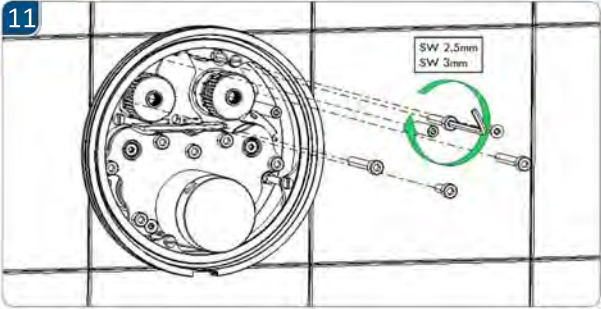
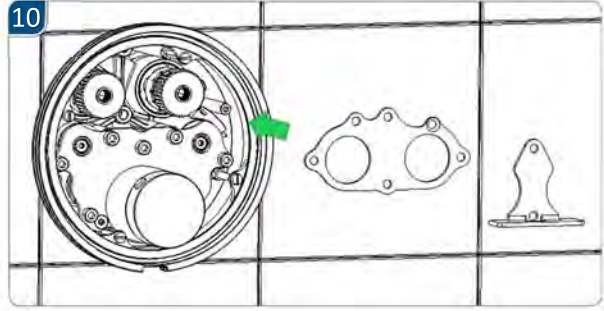
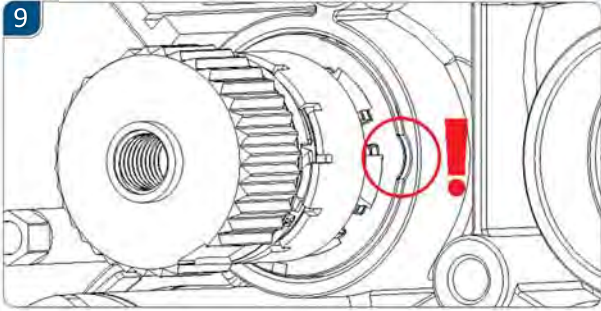


<p><b>P bar</b></p>   	<p><b>T °C</b></p>   	<p><b>Q 3bar</b></p>  <p>l/min MAX <b>20</b></p>  <p>l/min MAX <b>20</b></p>	
---	--	---	--

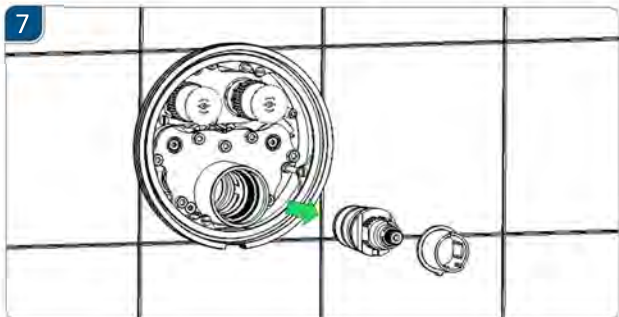
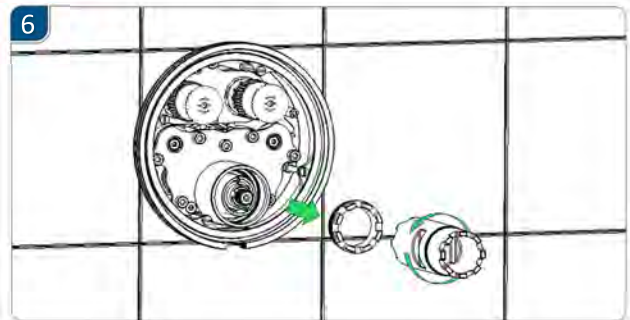
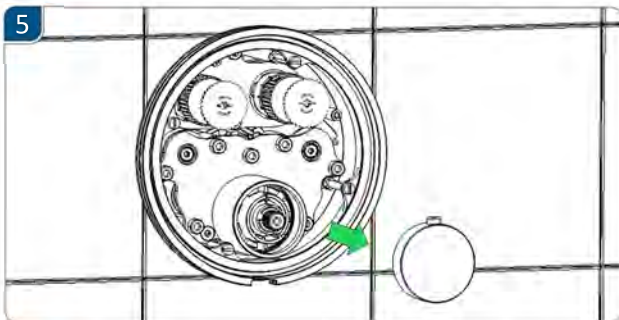
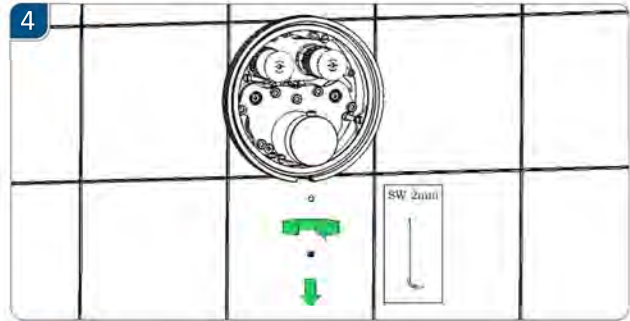
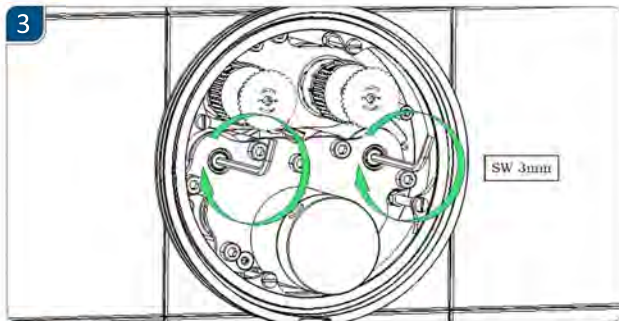
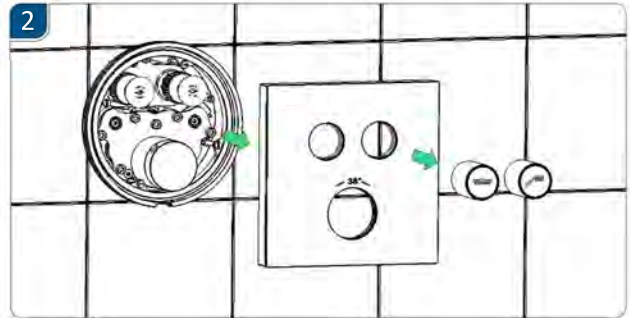
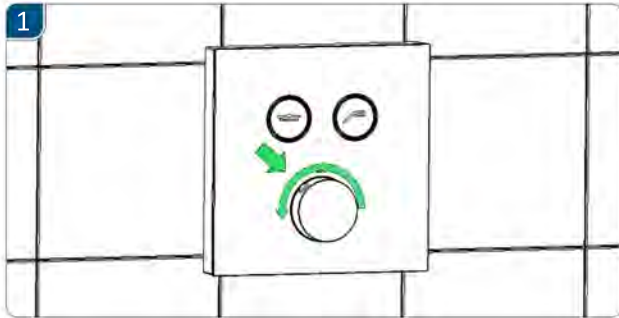


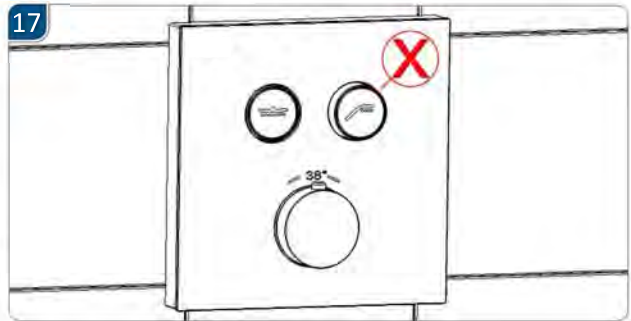
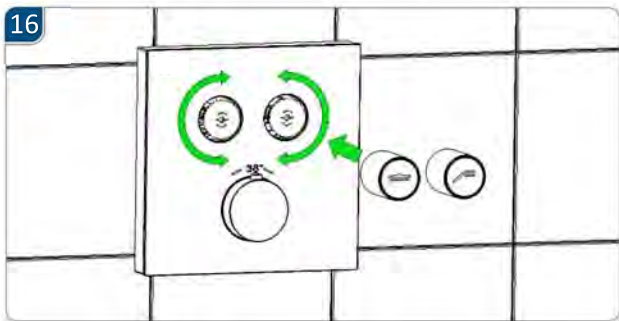
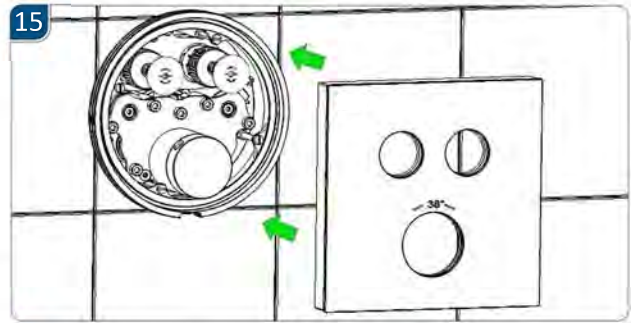
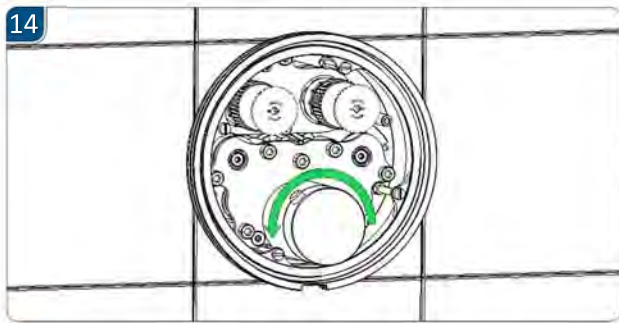
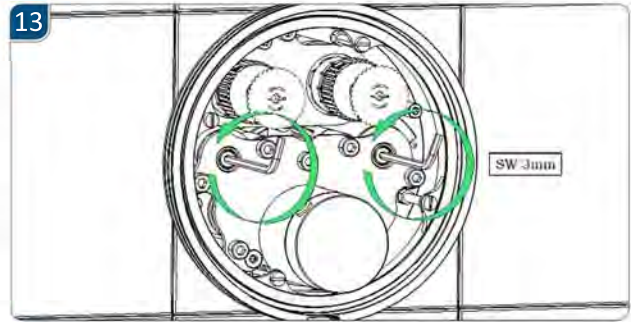
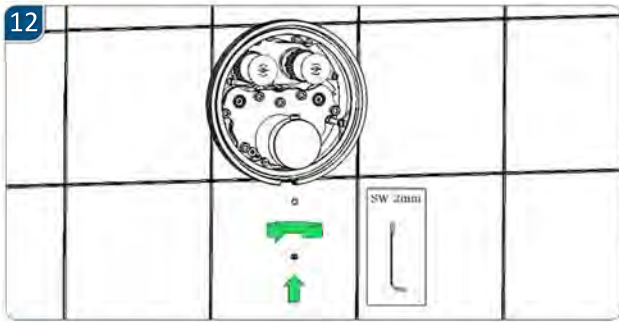
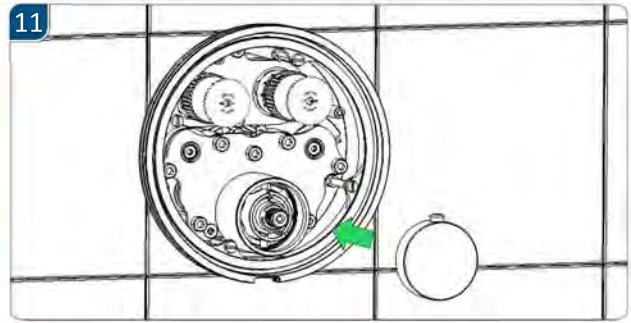
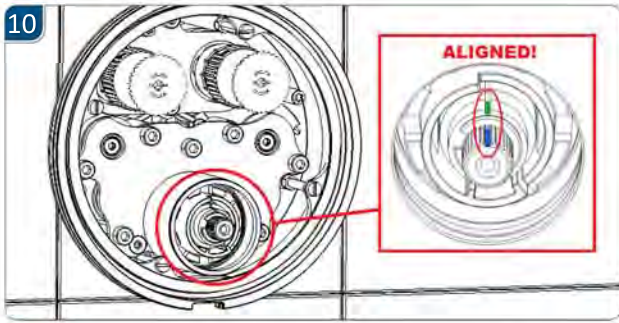
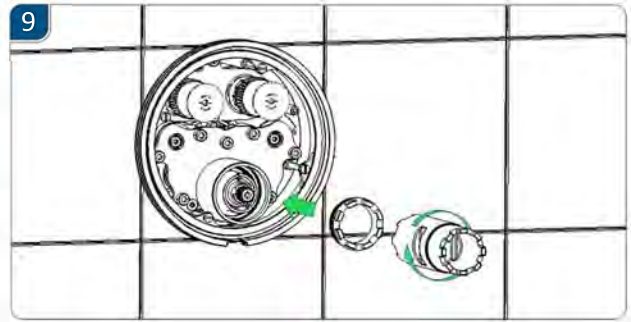
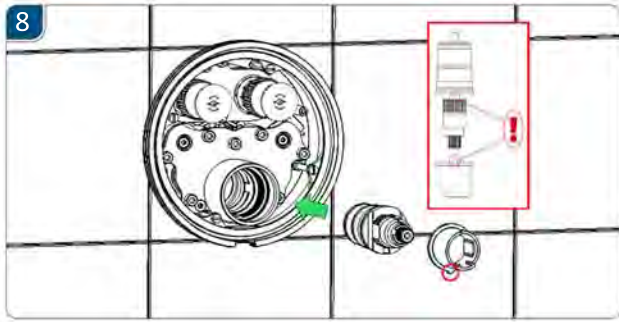
## Push Buttons Maintenance



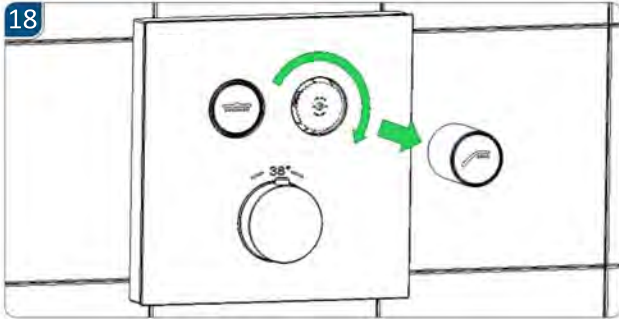


## Thermostatic Cartridge Maintenance

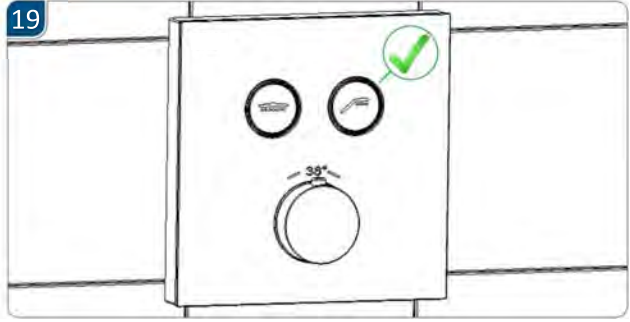




18



19
















# ESEMPIO IMPIANTO

## SYSTEM EXAMPLE



### PULIZIA / CLEANING

	 <p>SI CROMO YES CHROME</p>			
<p>ACQUA WATER</p> 	<p>ALCOOL ALCOHOL</p> 	<p>MICROFIBRA MICROFIBER</p> 	<p>SPUGNA SPONGE</p> 	<p>DETERGENTI DETERGENT</p> 
 <p>TUTTE LE FINITURE ALL FINISHES</p> <p>ACQUA E SAPONE WATER AND SOAP</p> 				<p>ASCIUGARE BENE SEMPRE ALWAYS DRY WELL</p> 