

IVR 40/15 SC

The IVR 40/15 Sc: Industrial vacuum cleaner for long work cycles. Vacuums up fine, combustible dusts in production areas and on machines. For installation in non-explosive areas.



Made in Germany



Order no. 9.986-066.0

- Cyclone-like pre-separation system
- Sound reduction
- Safe accessory storage

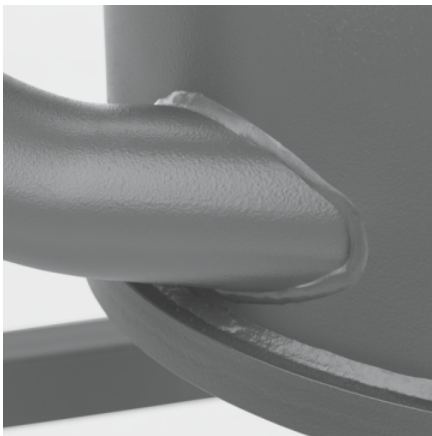
Technical data

EAN code		4054278030067
Supply voltage	Ph / V / Hz	3 / 400 / 50
Air flow	l/s / m³/h	58 / 210
Vacuum	mbar / kPa	200 / 20
Container content	l	40
Container material		Metal
Rated input power	kW	1.5
Vacuuming type		Electric
Connection nominal diameter		ID 50
Accessory nominal diameter		ID 50 / ID 40
Sound pressure level	dB(A)	57
Main filter dust class		M
Filter area for main filter	m²	1.75
Weight without accessories	kg	113
Weight incl. packaging	kg	113
Dimensions (L × W × H)	mm	890 × 670 × 1560

Equipment

Main filter	Pocket filter
Accessories included in the scope of delivery	no
Container emptying	Set-down trolley
<ul style="list-style-type: none"> ▪ Included in the scope of supply. 	

Users must receive training on this device.



Particularly robust, particularly flexible

- With practical, movable suction hose port/pipe bend.
- Despite its very compact design, it features numerous options for carrying accessories.
- Machine and chassis very robust and equipped with high wall thicknesses.



Wear-resistant side channel blower

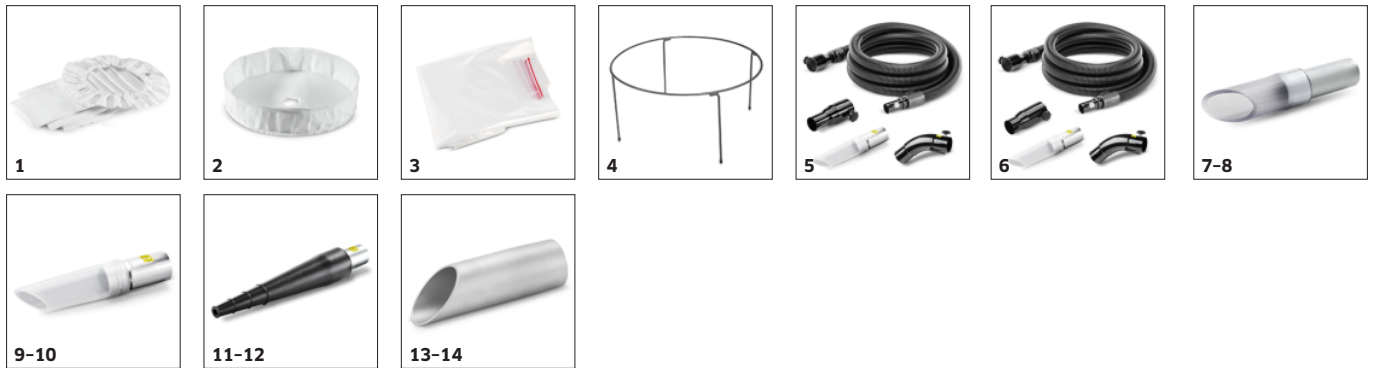
- With 1.5 kW power and soft start-up for vacuuming small amounts of dust and solid materials.
- For strong suction power and service life of at least 20,000 hours.
- Optimally suited for mobile use in multiple shift operation.



Convenient, manual filter cleaning

- Effortless operation by means of an ergonomically placed lever if required.
- Extends the life of the filter and thus reduces the maintenance effort.
- Identical cleaning results, regardless of the amount of force used.

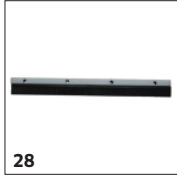
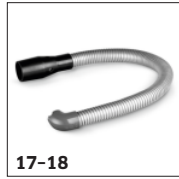
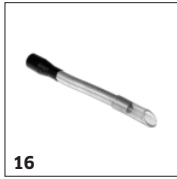
ACCESSORIES FOR IVR 40/15 SC 9.986-066.0



		Order no.	Description	
FILTERS				
Bag/star filter				
Bag filter PE M 1.75 m ²	1	9.981-681.0	Electroconductive filter cloth for dust class M with 517 mm diameter and 1.75 m ² filter area.	■
Surface filter				
Surface filter PE L 0.45 m ²	2	9.980-180.0	Flat filter for dust class L with 470 mm diameter. Electroconductive and 0.45 m ² filter area.	□
EMPTYING SUPPORTS				
Emptying bags				
PE emptying bag dia. 540 mm 50 l	3	9.977-885.0		■
Downholder				
Downholder Ø 517 mm 30 l	4	9.980-126.0	Prevents suction of emptying bag during vacuuming operation: Downholder for round bottom bag (30 l).	□
ACCESSORY SETS				
Accessory kit for solids/dust				
Accessory kit for solids/dust DN 40	5	9.989-659.0	Accessory kit DN 40 for industrial vacuum cleaners (solids and dust): EVA hose (9.988-088.0), handle (9.977-679.0), standard nozzle (9.988-401.0), reducer (9.989-690.0).	□
Accessory kit for solids/dust DN 50	6	9.989-662.0	Accessory kit DN 50 for industrial vacuum cleaners (solids and dust): EVA hose (9.988-090.0), handle (9.977-678.0), standard nozzle (9.988-402.0), reducer (9.977-772.0).	□
NOZZLES				
Standard nozzles				
Standard PVC nozzle DN40	7	9.989-674.0	Electroconductive standard PVC nozzle. DN 40.	□
Standard PVC nozzle DN50	8	9.989-673.0	Electroconductive standard PVC nozzle. DN 50.	□
Standard nozzle silicone DN40	9	9.988-401.0	Stretchy standard nozzle made from silicone, inner cone DN 40.	□
Standard nozzle silicone DN50	10	9.988-402.0		□
Standard nozzle cuttable rubber DN40	11	9.989-677.0	Standard nozzle, electroconductive, made from cuttable rubber. DN 40.	□
Standard nozzle cuttable rubber DN50	12	9.989-675.0	Standard nozzle, electroconductive, made from cuttable rubber. DN 50.	□
Standard aluminium nozzle DN40	13	9.980-748.0	Diagonal nozzle made from anodised aluminium, electroconductive, DN 40.	□
Standard aluminium nozzle DN50	14	9.980-749.0	Diagonal nozzle made from anodised aluminium, electroconductive, DN 50.	□

■ Included in the scope of supply. □ Available accessories.

ACCESSORIES FOR IVR 40/15 SC 9.986-066.0



		Order no.	Description	
NOZZLES				
Flexible standard nozzles				
Standard nozzle flexible PVC DN40	15	9.981-420.0	Electroconductive, flexible round nozzle made from galvanised steel, with rubber mouthpiece DN 30.	<input type="checkbox"/>
Standard nozzle flexible PVC DN50	16	9.981-421.0	Electroconductive, flexible round nozzle made from galvanised steel, DN 50, with rubber mouthpiece DN 30.	<input type="checkbox"/>
Standard nozzle, flexible, angled 90° PP DN40	17	9.981-429.0	Flexible, electroconductive angled nozzle, DN 40, length: 800 mm.	<input type="checkbox"/>
Standard nozzle, flexible, angled 90° PP DN50	18	9.981-430.0	Flexible, electroconductive angled nozzle, DN 50, length: 800 mm.	<input type="checkbox"/>
Floor nozzles				
Aluminium floor nozzle 370 mm DN40	19	9.989-683.0	Floor nozzle, 370 mm, made from aluminium. DN 40.	<input type="checkbox"/>
Aluminium floor nozzle, el, 370 mm, DN40	20	9.989-682.0	Floor nozzle, 370 mm, made from aluminium. Electroconductive. DN 40.	<input type="checkbox"/>
Aluminium floor nozzle 200 mm DN50	21	9.981-426.0	Floor nozzle, DN 50, with 200 mm suction width.	<input type="checkbox"/>
Aluminium floor nozzle 370 mm DN50	22	9.989-664.0	Floor nozzle. 370 mm, made from aluminium. Electroconductive. DN 50.	<input type="checkbox"/>
Aluminium floor nozzle, el, 370 mm, DN50	23	9.987-612.0	Electroconductive multi-purpose floor nozzle. 370 mm wide, DN 50.	<input type="checkbox"/>
Aluminium floor nozzle 500 mm DN50	24	9.989-684.0	Floor nozzle, 500 mm, made from aluminium. Electroconductive. DN 50.	<input type="checkbox"/>
Aluminium floor nozzle, el, 500 mm, DN50	25	9.981-925.0	Floor nozzle with 500 mm suction width and hinge. DN 50, electroconductive.	<input type="checkbox"/>
Stainless steel floor nozzle el 370 mm DN40	26	9.989-558.0	Multi-purpose floor nozzle (370 mm), electroconductive, DN 40.	<input type="checkbox"/>
Stainless steel floor nozzle el 370 mm DN50	27	9.988-115.0	Floor nozzle (370 mm) made from stainless steel, electroconductive, DN 50.	<input type="checkbox"/>
Floor nozzle rubber strip oil-resistant, 220 mm	28	9.981-923.0	Squeegee with plastic strip for floor nozzle, 220 mm wide.	<input type="checkbox"/>

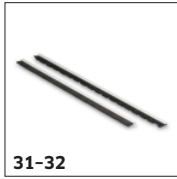
■ Included in the scope of supply. □ Available accessories.

ACCESSORIES FOR IVR 40/15 SC

9.986-066.0



29-30



31-32



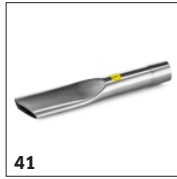
33-34



35-36



37-40



41



42

		Order no.	Description	
NOZZLES				
Floor nozzles				
Floor nozzle rubber strip 370 mm	29	9.981-914.0	Squeegee with profiled strip for floor nozzle, 370 mm wide.	<input type="checkbox"/>
Floor nozzle rubber strip 500 mm	30	9.981-915.0	Oil-resistant squeegee with profiled strip for floor nozzle, 500 mm wide.	<input type="checkbox"/>
Floor nozzle brush strip el. 370 mm	31	9.984-939.0	Electroconductive squeegee for floor nozzle, 370 mm wide.	<input type="checkbox"/>
Floor nozzle brush strip 500 mm	32	9.980-764.0	Brush strip set for floor nozzle 500 mm, with profiled strip.	<input type="checkbox"/>
Crevice nozzles				
Crevice nozzle PP 15 mm × 145 mm DN40	33	9.988-116.0	Electroconductive, flat multi-purpose crevice nozzle made from plastic, DN 42.	<input type="checkbox"/>
Crevice nozzle PP 15 mm × 145 mm DN50	34	9.988-117.0	Electroconductive, flat multi-purpose crevice nozzle made from plastic, DN 52.	<input type="checkbox"/>
Crevice nozzle PU 19 mm × 160 mm DN40	35	9.981-483.0	Crevice nozzle made from PU, DN 40.	<input type="checkbox"/>
Crevice nozzle PU 22 mm × 175 mm DN50	36	9.981-482.0	Crevice nozzle made from PU, DN 50.	<input type="checkbox"/>
Crevice nozzle 17 mm × 120 mm DN40	37	9.989-680.0	Electroconductive crevice nozzle, 17 × 120 mm. DN 40.	<input type="checkbox"/>
Crevice nozzle 25 mm × 120 mm DN40	38	9.989-678.0	Electroconductive crevice nozzle, 25 × 120 mm. DN 40.	<input type="checkbox"/>
Crevice nozzle 18 mm × 120 mm DN50	39	9.981-442.0	Electroconductive crevice nozzle made from sheet steel, DN 50, with 17 mm slot width.	<input type="checkbox"/>
Crevice nozzle 25 mm × 120 mm DN50	40	9.981-465.0	Electroconductive crevice nozzle made from sheet steel, DN 50, with 25 mm slot width.	<input type="checkbox"/>
Stainless steel crevice nozzle 17 mm × 120 mm DN40	41	9.989-193.0	Crevice nozzle made from stainless steel, DN 50.	<input type="checkbox"/>
Stainless steel crevice nozzle 22 mm × 220 mm DN50	42	9.988-123.0	Stainless steel crevice nozzle, DN 42, suitable for use with foods.	<input type="checkbox"/>

■ Included in the scope of supply. □ Available accessories.

ACCESSORIES FOR IVR 40/15 SC 9.986-066.0



		Order no.	Description	
NOZZLES				
Flexible crevice nozzles				
Flexible crevice nozzle silicone 65 mm DN50	43	9.988-403.0	Flexible crevice nozzle made from silicone, DN 50.	<input type="checkbox"/>
Flexible crevice nozzle 11 mm × 58 mm DN40	44	9.989-681.0	Electroconductive and flexible crevice nozzle, 11 × 58 mm.	<input type="checkbox"/>
Flexible crevice nozzle 20 mm × 45 mm DN40	45	9.981-423.0	Flexible and electroconductive crevice nozzle made from galvanised steel with 20 mm slot width, DN 40.	<input type="checkbox"/>
Flexible crevice nozzle 12 mm × 45 mm DN50	46	9.981-424.0	Flexible, electroconductive galvanised crevice nozzle, DN 50, with 13 mm slot width.	<input type="checkbox"/>
Flexible crevice nozzle 20 mm × 45 mm DN50	47	9.981-425.0	Flexible and electroconductive crevice nozzle made from galvanised steel with 20 mm slot width, DN 50.	<input type="checkbox"/>
Surface nozzles				
Silicone surface nozzle 120 mm DN40	48	9.988-118.0	Electroconductive rubber nozzle, angled, DN 40, suitable for use with foods.	<input type="checkbox"/>
Silicone surface nozzle 120 mm DN50	49	9.988-119.0	Electroconductive rubber nozzle, angled, DN 50, suitable for use with foods.	<input type="checkbox"/>
Aluminium surface nozzle, 150 mm, DN 40	50	9.989-666.0	Surface nozzle, 150 mm, made from aluminium. DN 40.	<input type="checkbox"/>
Aluminium surface nozzle 150 mm DN50	51	9.989-665.0	Surface nozzle, 150 mm, made from aluminium. DN 50.	<input type="checkbox"/>
Borehole nozzles				
Blind hole nozzle DN40	52	9.989-671.0	90° curved blind hole nozzle with 60 mm diameter.	<input type="checkbox"/>
Blind hose nozzle angled 60° DN40	53	9.989-669.0	90° curved blind hole nozzle with 48 mm diameter. DN 40.	<input type="checkbox"/>
Blind hose nozzle angled 90° DN40	54	9.989-667.0	90° curved blind hole nozzle with 60 mm diameter. DN 40.	<input type="checkbox"/>
Blind hose nozzle angled 90° 200 mm extension DN40	55	9.989-670.0	90° curved blind hole nozzle with 48 mm diameter. DN 40.	<input type="checkbox"/>
BRUSHES				
Standard brushes				
Standard brush 40 mm DN40	56	9.981-431.0	Flat brush nozzle DN 40.	<input type="checkbox"/>

Available accessories.

ACCESSORIES FOR IVR 40/15 SC

9.986-066.0

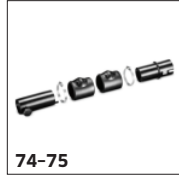


		Order no.	Description	
BRUSHES				
Standard brushes				
Standard brush 40 mm DN50	57	9.981-432.0	Flat brush nozzle DN 50.	<input type="checkbox"/>
End brushes				
End brush Ø 82 mm DN40	58	9.989-609.0	Electroconductive end brush with 82 mm diameter. DN 40.	<input type="checkbox"/>
End brush Ø 82 mm DN50	59	9.989-608.0	Electroconductive end brush with 82 mm diameter. DN 50.	<input type="checkbox"/>
Surface brushes				
Surface brush PP 24 mm DN40	60	9.989-610.0	Electroconductive surface brush. DN 40.	<input type="checkbox"/>
Surface brush 300 mm DN40	61	9.981-911.0	Vacuum brush, 300 mm, with 45° connection, with star screw, horsehair bristles.	<input type="checkbox"/>
Surface brush 300 mm DN50	62	9.981-912.0		<input type="checkbox"/>
HOSES				
PVC				
Hose PVC DN40 3 m	63	9.989-647.0	PVC hose, DN 40. Temperature-resistant up to 85 °C and electrically conductive. Length: 3 m.	<input type="checkbox"/>
Hose PVC DN40 5 m	64	9.989-614.0	Electroconductive PVC hose, DN 40. Temperature-resistant up to 85 °C. Length: 5 m.	<input type="checkbox"/>
PVC hose DN40 15 m without connectors	65	9.989-633.0	PVC hose without tap adapter, DN 40. Electroconductive and temperature-resistant up to 85 °C. Length: 15 m.	<input type="checkbox"/>
Hose PVC DN50 3 m	66	9.989-615.0	Electroconductive PVC hose, DN 50. Temperature-resistant up to 85 °C. Length: 3 m.	<input type="checkbox"/>
Hose PVC DN50 5 m	67	9.989-616.0	Electroconductive PVC hose, DN 50. Temperature-resistant up to 85 °C. Length: 5 m.	<input type="checkbox"/>
PVC hose DN50 15 m without connectors	68	9.989-634.0	PVC hose without tap adapter, DN 50. Electroconductive and temperature-resistant up to 85 °C. Length: 15 m.	<input type="checkbox"/>
EVA hoses				
Hose EVA NW40 3 m	69	9.988-088.0	Electroconductive hose with NW 40. Suitable for temperatures up to 65°C. Length: 3 m.	<input type="checkbox"/>
Hose EVA NW40 5 m	70	9.988-089.0	Five-metre-long, electroconductive hose with NW 40. Suitable for temperatures up to 65°C. Length: 5 m.	<input type="checkbox"/>

Available accessories.

ACCESSORIES FOR IVR 40/15 SC

9.986-066.0



	Order no.	Description	
HOSES			
EVA hoses			
EVA hose DN40 15 m without connectors	71 9.989-630.0	EVA hose without tap adapter, DN 40. Electroconductive and temperature-resistant up to 65 °C. Length: 15 m.	<input type="checkbox"/>
Hose EVA NW50 3 m	72 9.988-090.0	Electroconductive hose with NW50. Suitable for temperatures up to 65°C. Length: 3 m.	<input type="checkbox"/>
Hose EVA NW50 5 m	73 9.988-091.0		<input type="checkbox"/>
Hose installation sets			
Hose installation kit DN40	74 9.989-627.0	Multipiece hose connection set, DN 40.	<input type="checkbox"/>
Hose installation kit DN50	75 9.989-628.0	Multipiece hose connection kit, DN 50.	<input type="checkbox"/>
PU hoses			
Hose PU DN40 3 m	76 9.989-617.0	Oil-resistant, electroconductive PU hose, DN 40. Suitable for abrasive suction media and temperature-resistant up to 80 °C. Length: 3 m.	<input type="checkbox"/>
Hose PU DN40 5 m	77 9.989-618.0	Oil-resistant, electroconductive PU hose, DN 40. Suitable for abrasive suction media and temperature-resistant up to 80 °C. Length: 5 m.	<input type="checkbox"/>
PU hose DN40 15 m without connectors	78 9.989-637.0	PU hose without tap adapter, DN 40. Electroconductive and temperature-resistant up to 80 °C. Length: 15 m.	<input type="checkbox"/>
Hose PU DN50 3 m	79 9.989-619.0	Oil-resistant, electroconductive PU hose, DN 50. Suitable for abrasive suction media and temperature-resistant up to 80 °C. Length: 3 m.	<input type="checkbox"/>
Hose PU DN50 5 m	80 9.989-620.0	Oil-resistant, electroconductive PU hose, DN 50. Suitable for abrasive suction media and temperature-resistant up to 80 °C. Length: 5 m.	<input type="checkbox"/>
PU hose DN50 15 m without connectors	81 9.989-638.0	PU hose without tap adapter, DN 50. Electroconductive and temperature-resistant up to 80 °C. Length: 15 m.	<input type="checkbox"/>
ME-PU-hoses			
Hose ME-PU DN40 3 m	82 9.989-621.0	Electroconductive, oil-resistant ME-PU hose, DN 40. Suitable for abrasive suction media and temperature-resistant up to 110 °C. Length: 3 m.	<input type="checkbox"/>
ME-PU hose, DN 40, 5 m	83 9.989-622.0	Electroconductive, oil-resistant ME-PU hose, DN 40. Suitable for abrasive suction media and temperature-resistant up to 110 °C. Length: 5 m.	<input type="checkbox"/>
ME-PU hose DN40 15 m without connectors	84 9.989-640.0	Electroconductive, oil-resistant ME-PU hose without tap adapter, DN 40. Suitable for abrasive suction media and temperature-resistant up to 110 °C. Length: 15 m.	<input type="checkbox"/>

Available accessories.

ACCESSORIES FOR IVR 40/15 SC

9.986-066.0



	Order no.	Description	
HOSES			
ME-PU-hoses			
Hose ME-PU DN50 3 m	85 9.989-623.0	Electroconductive, oil-resistant ME-PU hose, DN 50. Suitable for abrasive suction media and temperature-resistant up to 110 °C. Length: 3 m.	<input type="checkbox"/>
Hose ME-PU DN50 5 m	86 9.989-625.0	Electroconductive, oil-resistant ME-PU hose, DN 50. Suitable for abrasive suction media and temperature-resistant up to 110 °C. Length: 5 m.	<input type="checkbox"/>
ME-PU hose DN50 15 m without connectors	87 9.989-641.0	Electroconductive, oil-resistant ME-PU hose without tap adapter, DN 50. Suitable for abrasive suction media and temperature-resistant up to 110 °C. Length: 15 m.	<input type="checkbox"/>
HANDLES			
Elbow aluminium 45° DN40	88 9.989-544.0	45° curved handle made from aluminium, DN 40.	<input type="checkbox"/>
Elbow aluminium 45° DN50	89 9.989-547.0	Handle with 45° bend. Made from aluminium, DN 50.	<input type="checkbox"/>
Handle DN 40	90 9.977-679.0	45° curved and electroconductive handle made from stainless steel. Inner cone DN 40.	<input type="checkbox"/>
Handle DN 50	91 9.977-678.0	Electroconductive and 45° curved handle made from stainless steel. Inner cone DN 50.	<input type="checkbox"/>
Stainless steel handle NW40	92 9.989-036.0	Curved and electroconductive handle made from stainless steel. Angle 45°, inner cone NW 40.	<input type="checkbox"/>
Stainless steel handle NW50	93 9.988-111.0	Curved and electroconductive handle made from stainless steel. Angle 45°, inner cone NW 50.	<input type="checkbox"/>
SUCTION TUBES			
Carbon suction tube 1500 mm DN40	94 9.989-552.0	Very light carbon extension tube, electroconductive, DN 40. Length: 1500 mm.	<input type="checkbox"/>
Carbon suction tube 1500 mm DN50	95 9.989-553.0	Electroconductive, very light carbon extension tube. Inner cone DN 50, 1500 mm long.	<input type="checkbox"/>
Suction tube 850 mm DN 40	96 9.977-525.0	Steel extension tube, electroconductive, DN 40. Length: 850 mm.	<input type="checkbox"/>
	97 9.977-531.0	850 mm long extension tube made from steel. Electroconductive and with inner cone DN 50.	<input type="checkbox"/>
Aluminium suction tube 1500 mm NW40	98 9.989-038.0	Aluminium extension tube, electroconductive, NW 40. Length: 1500 mm.	<input type="checkbox"/>

Available accessories.

ACCESSORIES FOR IVR 40/15 SC 9.986-066.0



		Order no.	Description	
SUCTION TUBES				
Aluminium suction tube 1500 mm NW50	99	9.989-035.0	Electrically conductive suction tube (1500 mm) made of aluminium with 50 mm diameter.	<input type="checkbox"/>
Stainless steel suction tube 850 mm NW40	100	9.989-039.0	Stainless steel extension tube, electroconductive, NW 40. Length: 850 mm.	<input type="checkbox"/>
Stainless steel suction tube 850 mm NW50	101	9.988-114.0	Electroconductive extension tube made from stainless steel. Inner cone NW 50.	<input type="checkbox"/>
ADAPTERS / REDUCERS / DISTRIBUTORS				
Accessories adapter				
Adapter accessories DN 50 to DN 51	102	9.989-603.0	Steel adapter for connection of DN 50 to DN 51. Electroconductive.	<input type="checkbox"/>
Adapter accessories DN 51 to DN 50	103	9.989-601.0	Steel adapter for connection of DN 51 to DN 50. Electroconductive.	<input type="checkbox"/>
Adapter accessories DN50 to DN61	104	9.989-602.0	Steel adapter for connection of DN 50 to DN 61. Electroconductive.	<input type="checkbox"/>
Adapter accessories DN 61 to DN 50	105	9.989-604.0	Steel adapter for connection of DN 61 to DN 50. Electroconductive.	<input type="checkbox"/>
Reducers/expanders				
Reduction DN70 to DN50	106	9.977-772.0		<input type="checkbox"/>
Reduction DN70 to DN40	107	9.989-690.0	Electroconductive steel reducer for reduction from DN 70 to DN 40.	<input type="checkbox"/>
Reduction DN50 to DN40	108	9.981-231.0	Reducer from DN 50 to DN 40. Material: Steel. Electroconductive.	<input type="checkbox"/>
Stainless steel reducer DN 70 to DN 50	109	9.989-712.0		<input type="checkbox"/>
Stainless steel reducer DN 70 to DN 40	110	9.989-713.0		<input type="checkbox"/>
Expander				
Expansion DN50 to DN70	111	9.981-921.0	Reducer from external cone DN 50 to internal cone DN 70. Material: Steel. Electroconductive.	<input type="checkbox"/>
Distributor				
Y-piece fitting DN70 to DN50	112	9.989-611.0	Electroconductive steel fitting, DN 70/DN 50 / DN 50.	<input type="checkbox"/>

Available accessories.

ACCESSORIES FOR IVR 40/15 SC 9.986-066.0



112-113



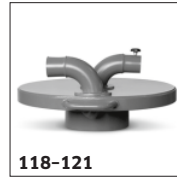
114



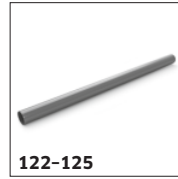
115



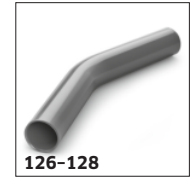
117



118-121



122-125



126-128

	Order no.	Description	
ADAPTERS / REDUCERS / DISTRIBUTORS			
Distributor			
Y-piece fitting DN50 to DN40	113	9.981-149.0	Manifold, electroconductive, steel, DN 50/40/40. <input type="checkbox"/>
PRE-SEPARATORS			
Pre-separator			
Pre-separator Ef solid materials 100 l DN70	114	9.982-238.0	Mobile pre-separator station with 110 l volume and emptying flap. <input type="checkbox"/>
Pre-separator dust 40 l DN40	115	9.989-687.0	<input type="checkbox"/>
Pre-separator dust 60 l DN50	116	9.989-688.0	<input type="checkbox"/>
Pre-separator drum 200 l	117	9.989-685.0	Standard drum which complies with the ISO 15750-2 standard. <input type="checkbox"/>
Pre-separator lid			
Pre-separator cover Op liquids ø 517 mm DN70	118	9.981-666.0	Pre-separator cover DN 70. Suitable for containers with 517 mm diameter. <input type="checkbox"/>
Pre-separator cover Op liquids ø 575 mm DN70	119	9.981-662.0	Pre-separator cover DN 70 for 200 litre standard drum (9.989-685.0). <input type="checkbox"/>
Pre-separator cover solid materials ø 517 mm DN70	120	9.981-665.0	Pre-separator cover DN 70. Suitable for containers with 517 mm diameter. <input type="checkbox"/>
Pre-separator cover solid materials ø 575 mm DN70	121	9.981-661.0	Pre-separator cover DN 70 for 200 litre standard drum (9.989-685.0). <input type="checkbox"/>
ACCESSORIES STATIONARY			
IV pipelines			
IV pipe Ø 42.4 mm	122	9.980-451.0	<input type="checkbox"/>
IV pipe Ø 60 mm	123	9.980-452.0	<input type="checkbox"/>
IV pipe Ø 75 mm	124	9.980-453.0	<input type="checkbox"/>
IV pipe Ø 100 mm	125	9.980-455.0	<input type="checkbox"/>
IV pipe elbow 30° Ø 60.3 mm	126	9.980-545.0	<input type="checkbox"/>

Available accessories.

ACCESSORIES FOR IVR 40/15 SC 9.986-066.0



	Order no.	Description	
ACCESSORIES STATIONARY			
IV pipelines			
IV pipe elbow 30° Ø 76.1 mm	127	9.980-546.0	<input type="checkbox"/>
IV pipe elbow 30° Ø 101.6 mm	128	9.980-547.0	<input type="checkbox"/>
IV pipe elbow 45° Ø 60.3 mm	129	9.980-548.0	<input type="checkbox"/>
IV pipe elbow 45° Ø 76.1 mm	130	9.980-549.0	<input type="checkbox"/>
IV pipe elbow 45° Ø 101.6 mm	131	9.980-550.0	<input type="checkbox"/>
IV pipe elbow 60° Ø 60.3 mm	132	9.980-551.0	<input type="checkbox"/>
IV pipe elbow 60° Ø 76.1 mm	133	9.980-552.0	<input type="checkbox"/>
IV pipe elbow 60° Ø 60.3 mm	134	9.980-553.0	<input type="checkbox"/>
IV pipe elbow 90° Ø 42.4 mm	135	9.985-373.0	<input type="checkbox"/>
IV pipe elbow 90° Ø 60.3 mm	136	9.980-554.0	<input type="checkbox"/>
IV pipe elbow 90° Ø 76.1 mm	137	9.980-555.0	<input type="checkbox"/>
IV pipe elbow 90° Ø 101.6 mm	138	9.980-556.0	<input type="checkbox"/>
IV pipe reduction Ø 120 mm to 100 mm	139	9.981-335.0	<input type="checkbox"/>
IV pipe reduction Ø 120 mm to 60 mm	140	9.981-337.0	<input type="checkbox"/>

Available accessories.

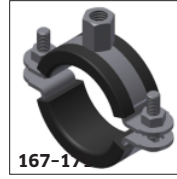
ACCESSORIES FOR IVR 40/15 SC 9.986-066.0



		Order no.	Description	
ACCESSORIES STATIONARY				
IV pipelines				
IV pipe reduction Ø 100 mm to 75 mm	141	9.981-334.0	Steel reducer with 2 mm wall thickness for reduction from 100 to 75 mm diameter. Length: 350 mm.	<input type="checkbox"/>
IV pipe reduction Ø 100 mm to 60 mm	142	9.981-336.0	Steel reducer with 2 mm wall thickness for reduction from 100 to 60 mm diameter. Length: 350 mm.	<input type="checkbox"/>
IV pipe reduction Ø 80 mm to 75 mm	143	9.980-494.0		<input type="checkbox"/>
IV pipe reduction Ø 80 mm to 60 mm	144	9.980-493.0		<input type="checkbox"/>
IV pipe reduction Ø 75 mm to 60 mm	145	9.981-333.0	Reducer, painted, made from steel with 2 mm wall thickness. For reduction from 75 to 60 mm diameter. Length: 350 mm.	<input type="checkbox"/>
IV pipe reduction Ø 60 mm to 42.2 mm	146	9.981-228.0		<input type="checkbox"/>
IV pipe manifold 30° branch Ø 120 mm to 100 mm	147	9.981-129.0		<input type="checkbox"/>
IV pipe manifold 30° branch Ø 120 mm to 75 mm	148	9.981-127.0		<input type="checkbox"/>
IV pipe manifold 30° branch Ø 100 mm to 75 mm	149	9.981-126.0		<input type="checkbox"/>
IV pipe manifold 30° branch Ø 100 mm to 60 mm	150	9.981-124.0		<input type="checkbox"/>
IV pipe manifold 30° branch Ø 75 mm to 60 mm	151	9.981-123.0		<input type="checkbox"/>
IV pipe manifold 30° branch Ø 60 mm to 42.4 mm	152	9.981-258.0	Pipe branch, 600 mm long, made from steel with 30° bend and 2 mm wall thickness. Diameter: 60/60/42.4 mm.	<input type="checkbox"/>
IV pipe manifold 30° branch Ø 120 mm	153	9.981-130.0		<input type="checkbox"/>
IV pipe manifold 30° branch Ø 100 mm	154	9.981-128.0		<input type="checkbox"/>

Available accessories.

ACCESSORIES FOR IVR 40/15 SC
9.986-066.0

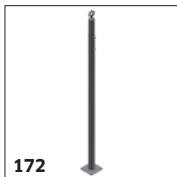


	Order no.	Description	
ACCESSORIES STATIONARY			
IV pipelines			
IV pipe manifold 30° branch Ø 75 mm	155	9.981-125.0	<input type="checkbox"/>
IV pipe manifold 30° branch Ø 60 mm	156	9.981-122.0	<input type="checkbox"/>
IV pipe manifold 30° branch Ø 42.4 mm	157	9.981-259.0	<input type="checkbox"/>
		Pipe branch, 600 mm long, made from steel with 30° bend and 2 mm wall thickness. Diameter: 42.4/42.4/42.4 mm.	
IV pipe manifold Y-piece Ø 120 mm to 100 mm	158	9.981-135.0	<input type="checkbox"/>
IV pipe manifold Y-piece Ø 100 mm to 75 mm	159	9.981-134.0	<input type="checkbox"/>
IV pipe manifold Y-piece Ø 80 mm to 60 mm	160	9.981-133.0	<input type="checkbox"/>
IV pipe manifold Y-piece Ø 75 mm to 60 mm	161	9.981-132.0	<input type="checkbox"/>
IV pipe manifold Y-piece Ø 60 mm to 42 mm	162	9.981-131.0	<input type="checkbox"/>
IV pipe connectors/fastenings			
IV pipe coupling Ø 42.4 mm	163	9.980-445.0	<input type="checkbox"/>
IV pipe coupling Ø 60 mm	164	9.980-446.0	<input type="checkbox"/>
IV pipe coupling Ø 75 mm	165	9.980-447.0	<input type="checkbox"/>
IV pipe coupling Ø 100 mm	166	9.980-449.0	<input type="checkbox"/>
IV pipe clamp Ø 41 - 44 mm	167	9.980-463.0	<input type="checkbox"/>
IV pipe clamp Ø 60 - 63 mm	168	9.980-464.0	<input type="checkbox"/>

Available accessories.

ACCESSORIES FOR IVR 40/15 SC

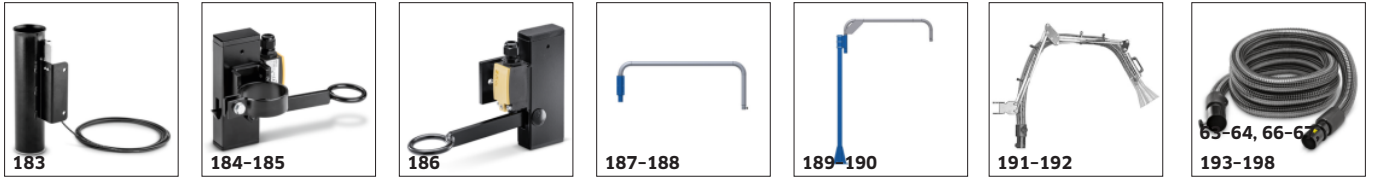
9.986-066.0



	Order no.	Description	
ACCESSORIES STATIONARY			
IV pipe connectors/fastenings			
IV pipe clamp Ø 74 - 78 mm	169	9.980-465.0	<input type="checkbox"/>
IV pipe clamp Ø 99 - 103 mm	170	9.980-466.0	<input type="checkbox"/>
IV pipe clamp Ø 116 - 120 mm	171	9.980-467.0	<input type="checkbox"/>
IV pipe floor support	172	9.981-118.0	<input type="checkbox"/>
IV pipe on hose adapter, female Ø 42.2 to DN40	173	9.981-256.0	<input type="checkbox"/>
IV pipe on hose adapter, female Ø 60 to DN50	174	9.981-166.0	<input type="checkbox"/>
IV pipe on hose adapter, female Ø 75 to DN70	175	9.981-170.0	<input type="checkbox"/>
IV pipe on hose adapter, male Ø 42.2 to DN40	176	9.981-257.0	<input type="checkbox"/>
IV pipe on hose adapter, male Ø 60 to DN50	177	9.981-332.0	<input type="checkbox"/>
IV pipe on hose adapter, male Ø 75 to DN70	178	9.981-195.0	<input type="checkbox"/>
Suction point accessories			
Suction point standard PVC nozzle DN40	179	9.981-454.0	<input type="checkbox"/>
Suction point standard PVC nozzle DN50	180	9.981-455.0	<input type="checkbox"/>
Suction point, standard brush DN40	181	9.981-436.0	<input type="checkbox"/>
Suction point nozzle holder	182	9.981-520.0	<input type="checkbox"/>

Available accessories.

ACCESSORIES FOR IVR 40/15 SC 9.986-066.0



		Order no.	Description	
ACCESSORIES STATIONARY				
Suction point accessories				
Suction point nozzle holder with limit switch	183	9.982-111.0	Jet cookers with sensor, for wall mounting. Suitable for nozzles DN 40, DN 50 and DN 70.	<input type="checkbox"/>
Suction point hose hanger with limit switch ø 60 mm	184	9.982-083.0	Hose holder with limit switch for fastening to pipelines with 60 mm diameter.	<input type="checkbox"/>
Suction point hose hanger with limit switch ø 75 mm	185	9.982-092.0	Hose holder with limit switch for fastening to pipelines with 75 mm diameter.	<input type="checkbox"/>
Suction point hose hanger with limit switch	186	9.982-093.0	Hose holder with limit switch for wall mounting.	<input type="checkbox"/>
Suction point suction arm DN50 without hose	187	9.981-776.0	Swivel arm DN 50 with relevant wall mounting. Arm length: 2 m.	<input type="checkbox"/>
Suction point suction arm DN70 without hose	188	9.981-775.0	Swivel arm DN 70 with relevant wall mounting. Arm length: 2 m.	<input type="checkbox"/>
Suction point suction arm DN50 without hose	189	9.981-781.0	Swivel arm DN 50 with floor support (100 × 100 mm), arm length: 2 m.	<input type="checkbox"/>
Suction point suction arm DN70 without hose	190	9.981-780.0	Swivel arm DN 70 with floor support (100 × 100 mm), arm length: 2 m.	<input type="checkbox"/>
Suction point suction arm DN70	191	9.981-920.0	Suction arm DN 70 to DN 100, arm length: 2.5 m.	<input type="checkbox"/>
Suction point suction arm DN100	192	9.983-121.0	Suction arm DN 100, arm length: 2.5 m. Suction head with 150 mm diameter.	<input type="checkbox"/>
Suction point PVC hose DN40 3m	193	9.989-701.0		<input type="checkbox"/>
Suction point PVC hose DN40 5m	194	9.989-702.0		<input type="checkbox"/>
Suction point PVC hose DN50 3m	195	9.989-693.0		<input type="checkbox"/>
Suction point PVC hose DN50 5m	196	9.989-694.0		<input type="checkbox"/>

Available accessories.