



WMF 1500 S+

UNPRECEDENTED COFFEE VERSATILITY,
WITH GUARANTEED HIGH QUALITY.

Contents

4

WMF 1500 S+

6

Features & Innovations

20

Technical Data Overview

22

Customer Service

24

Accessory Equipment

26

WMF PhotoSimu App

28

Contact Details

WMF 1500 S+

UNPRECEDENTED COFFEE VERSATILITY,
WITH GUARANTEED HIGH QUALITY.

"I need a coffee machine I can depend on to make consistently excellent coffee, and I want it to satisfy my customers' desire for variety at the same time. The WMF 1500 S+ fits the bill perfectly. It's the versatile choice for my business."

Geared towards small to medium-sized coffee enterprises operating in a wide range of environments, the WMF 1500 S+ blends impressive variety and high performance with the quality and reliability you expect from WMF. Recommended for venues with an average daily requirement of 180 cups, it captures the eye with its customisable 10" colour touch display and appeals to every taste with its professional choice of coffee specialities. With two grinders, you can offer two different kinds of freshly ground coffee beans. Moreover, Dynamic Coffee Assist technology provides a quality

promise for all espresso-based drinks, automatically adjusting coffee quantity and grinding degree to ensure every cup tastes just as good as the first. And that's not all. Thanks to the unprecedented option of WMF's Fresh Filtered Coffee technology, for the first time you can satisfy both filter coffee enthusiasts and fans of coffee specialities from a single machine with a small footprint. Add the choice of any of our three milk systems and the option to attach a Syrup Station, and you have the flexibility you need to create your ideal configuration and offer your customers all the variety they desire.



Features & Innovations

FOR WMF CUSTOMERS,
THE FUTURE COMES AS STANDARD.

Blending reliable performance with intuitive operation, the WMF 1500 S+ packs an eclectic array of advanced features into its slim dimensions. What's more, it can be tailored to meet your needs and satisfy your customers' preferences.

The WMF 1500 S+ is the versatile solution for providing premium coffee specialties. It combines the high quality and long-term reliability you expect from WMF with the flexibility you desire and the variety your customers appreciate. It delivers the ease of use

that ensures efficiency in both served and self-service environments. Add the benefits of pioneering digital connectivity, and you have all the ingredients you need to grow and evolve your coffee business over many years.



Performance

DELIVERING A PREMIUM COFFEE EXPERIENCE



PROFESSIONAL BREWER

Made in Germany from a hardwearing, high-tech polymer to guarantee you performance and reliability over many years of service, the professional brewer has a 15 g capacity and is removable for easy cleaning and maintenance.



UP TO 2 COFFEE GRINDERS

To offer your customers a wide choice of premium coffee specialities, up to two different grinders can be used to create a range of recipes. Robust, quick and quiet, these long-lasting, high-performance grinders are electronically controlled and finely adjusted.

OUTPUT

Recommended for venues with an average requirement of 180 cups per day, the WMF 1500 S+ can rapidly satisfy your customers, producing a wide variety of premium coffee specialities at the touch of a button.

UP TO
180
CUPS PER DAY



ECO MODE

You can take advantage of the Eco Mode settings to reduce energy consumption during periods of light use.

Versatility

OUR INNOVATIONS, YOUR WAY



FLEXIBLE BEAN HOPPERS CONFIGURATION

For maximum variety, the up to three hoppers of the WMF 1500 S+ offer you a choice of up to 2 types of coffee beans, chocolate powder or twin toppings. Machines also provide the option of using the manual insert for ground coffee, for example for preparing decaffeinated coffee. The bean hoppers on the left and right can hold up to 1100 g of beans, and the central one has a 700 g capacity, while the powder hopper can hold up to 2000 g of powder. To optimize their visual impact, the hoppers share a coordinated design and each comes with a lockable lid. What's more, they are removable and dishwasher-safe for easy cleaning.

VARIETY OF BEVERAGES

The interactive 10" colour touch display of the WMF 1500 S+ lets you save up to 40 different drinks in the basic view. Both single-cup and double-cup dispensing is possible, and numerous beverage parameters can be pre-programmed or set by the user for maximum flexibility.

WATER SUPPLY

With the choice of either using an internal water tank or connecting the WMF 1500 S+ to a fixed water connection gives you added flexibility over the machine's positioning, enabling you to adapt to any environment.

CHOC MIXER

Designed to offer delicious chocolate specialities with minimum effort, the Choc Mixer promises easy handling and maintenance, thanks to a magnetic lock that guarantees correct insertion of the mixer bowl. Moreover, it is protected against damage by an integrated sensor that monitors the mixer wheel to ensure a perfect fit.



FRESH FILTERED COFFEE

With WMF's innovative Fresh Filtered Coffee option, you can serve both filtered coffee and a wide range of coffee specialities from a single machine, offering maximum variety with a minimal footprint. Each cup of delicious filtered coffee is freshly brewed to a constant temperature, volume and flavour, for consistent high quality over time. And with every cup brewed to order, there's no waste!



SYRUP STATION

Providing even greater variety, the optional WMF Syrup Station adds an exceptional taste experience to any menu. It lets you create exciting additional flavours using up to four different kinds of syrup in three different dosing quantities. The specialities you create can easily be stored as standard drinks on the display, and identified by a choice of over 20 different icons.



MILK SYSTEMS

The WMF 1500 S+ comes with a choice of three WMF milk systems. Basic Milk prepares classic coffees with hot milk and hot milk foam, such as cappuccino, latte macchiato and latte. Easy Milk enables you to tap into the market for cold milk mixed beverages too, automatically dispensing cold milk as well as hot milk or hot milk foam. The Dynamic Milk system offers an even wider range of possibilities, allowing the fully automatic preparation of four different consistencies of hot milk foam and three variations of cold milk foam, as well as hot and cold milk.

Quality

ENGINEERED FOR CONSISTENT PERFECTION

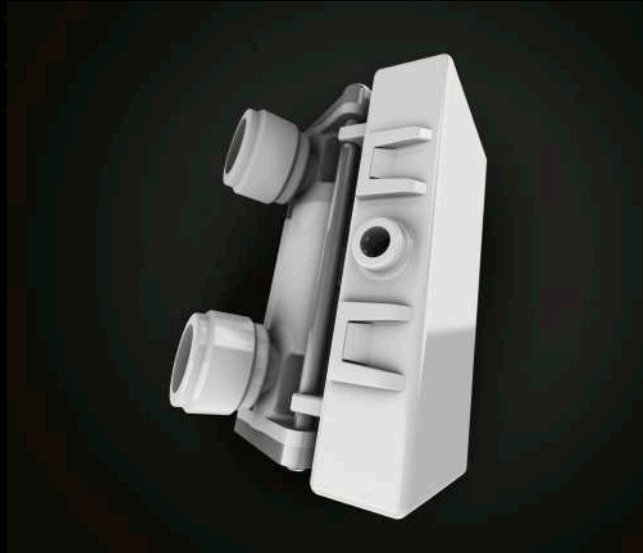


DYNAMIC COFFEE ASSIST

Dynamic Coffee Assist permanently guarantees the highest quality of all espresso-based coffee specialities offered by the WMF 1500 S+. Once beverage quality has been set, this unprecedented system continuously monitors the brewing flow, making automatic adjustments to the grinding degree or to the coffee quantity as necessary. This way, brewing time, extraction and value remain constant, so you know your customers will enjoy consistently excellent coffee.

DYNAMIC MILK ASSIST

Innovative Dynamic Milk Assist technology ensures the constant high quality of all milk drinks. Using state-of-the-art sensors, it continuously monitors the temperature in the cooler and the milk flow in the machine. Based on these values, it regulates factors like the pump speed to create perfect milk foam of the pre-selected consistency. In addition, Dynamic Milk Assist can also detect when the milk level is empty, even in bag-in-box systems



AUTOMATIC HEIGHT-ADJUSTABLE SPOUT

The spout on the WMF 1500 S+ automatically adjusts to the optimal height for each beverage selected, depending on the preset value for each recipe. So beverage temperature remains perfect, and unsightly splashes of milk on the housing are a thing of the past. This feature is optional and only available if Dynamic Milk system is installed.

BASIC STEAM SYSTEM

Used in conjunction with one of the WMF milk systems, the Basic Steam system allows any user to produce hot milk and foam. It can also be used to quickly and easily warm drinks such as hot chocolate and mulled wine.

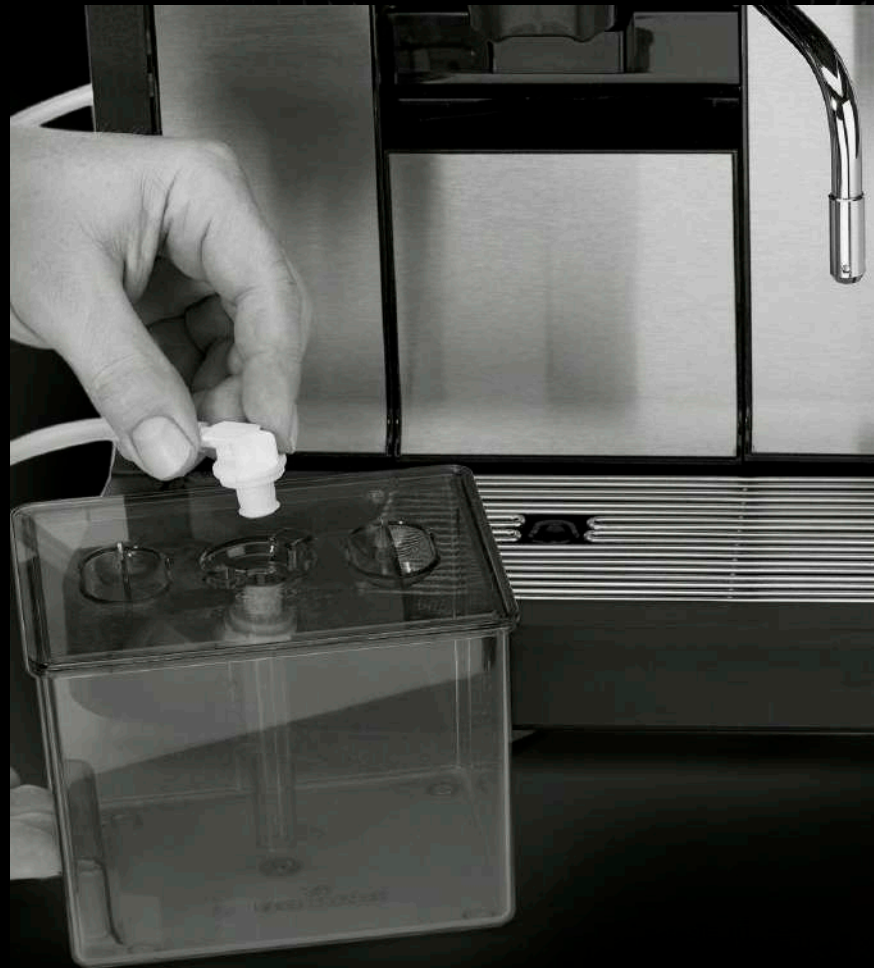


STEAM JET

Featuring WMF technology, SteamJet warms every cup in a matter of seconds. So every drink is not only served at the ideal temperature but also remains hot for longer, for true coffee indulgence.

Usability

ALL THE FUNCTIONS YOU NEED AT YOUR FINGERTIPS



CLEANING SYSTEMS

Each of WMF's automated, HACCP-compliant cleaning systems is engineered to optimize efficiency and ease of use, simplifying the maintenance process and reducing costs. With Clean in Place, the machine automatically cleans and rinses itself with hot water and steam after dispensing water into a box containing a cleaning tablet. Easy Clean is similar, except that the foamer head needs to be cleaned manually once a week. With the Plug&Clean system, an adapter is removed from the milk box and plugged into the machine. The automatic program cleans the whole milk system with hot water and steam, while the foamer head has to be cleaned manually once a week. The Basic Clean system requires the coffee machine to be cleaned manually with a cleaning liquid, then rinsed with fresh water. The spout is also cleaned manually once a day and placed in cleaning liquid.

BEVERAGE ORDER SETTING

To save time and effort, the display includes an option to pre-select multiple beverages in a single order. These beverages are then automatically produced one after the other.



10" COLOUR TOUCH DISPLAY

The WMF 1500 S+ immediately invites interaction with its attractive 10" colour touch display, featuring realistic product depictions and individual colour worlds. Navigation is intuitive, using familiar touch and swipe menus, with both served and self-service modes available. Perfect for presenting nutritional information, the display can also be used to show videos, for example to promote special offers at certain times of day.

LANGUAGE SELECTION

The language used on the display of the WMF 1500 S+ can be customized to make it easy for anyone to operate. Customers and staff can even select their own language during operation.

TIMER FUNCTIONS

The WMF 1500 S+ can be set to turn itself on and off, or activate and deactivate certain functions and beverages, whenever you want.

Customisation

TAILOR YOUR COFFEE MACHINE TO YOUR BUSINESS



ILLUMINATED LED SIDE PANELS

The coloured side panels of the WMF 1500 S+ are illuminated with LED lighting, which can be adjusted to suit your ambience. Moreover, the panels flash when action is required, for example when it is time for a refill. This simple feature quickly attracts the operator's attention, even from a distance.

BRANDING

The WMF 1500 S+ is ready to adapt to your specific requirements. That includes the option of featuring your own logo on the display screen menus, as well as customising colours and backgrounds, or uploading your own beverage symbols.

NUTRITION FACTS

The display of the WMF 1500 S+ is also perfect for showing nutritional information about the beverage being prepared, which can be very useful for compliance with tightening regulatory requirements. Information about various bean and powder types is already stored in the machine, and data on other recipes can easily be imported.



INDIVIDUAL BEVERAGE SIZE

To make life even simpler for users, they can customize the filling quantity individually via an easy-to-use touch slider before their beverage is dispensed.



ADVERTISING

The colourful 10" touch display also offers you opportunities to increase sales through eye-catching advertising or tailored special offers. So while your customers' beverages are being prepared, you can take advantage of their time and attention.

PRE-SELECT / POST-SELECT MODE

Pre-Select mode is ideal for staff, letting them select the size of the cup, the coffee strength or milk type, then the beverage. The alternative, Post-Select mode, is perfectly suited to self-service sales: the customer first selects a beverage and can then specify additional parameters.

BEVERAGE PARAMETER SETTING

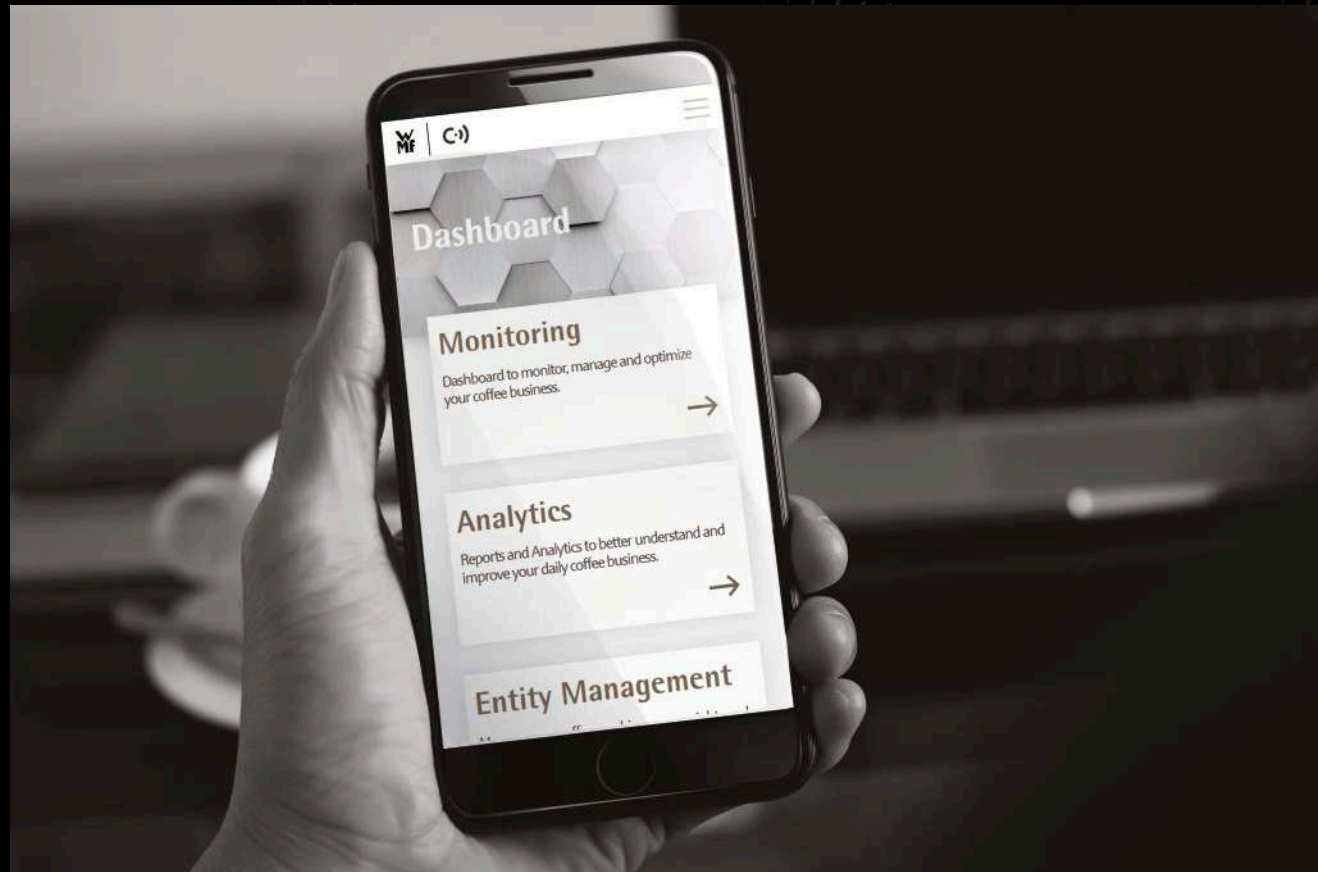
For ease of operation, the helpful "Small-Medium-Large" function lets you preset various desired filling volumes and match them to each beverage.

BEVERAGE BUTTON LAYOUT

You also have the option to rearrange button layouts, adding and removing preset buttons. For example, in a self-service environment you might choose a single-row layout.

Connectivity

COFFEE EXCELLENCE MEETS DIGITAL SOLUTIONS



WMF COFFEE CONNECT

WMF CoffeeConnect is our pioneering digital cloud platform. It transforms the potential of your WMF coffee machine and any other connected machines, giving them the ability to provide valuable data and receive instructions remotely. By collecting, analysing and processing information on sales, operation, consumption and maintenance, WMF CoffeeConnect gives you the power to optimize processes and reduce service costs. And that's only the beginning. You can also use it to increase turnover by sending advertising and special

offers directly from your desk to the machine's display. WMF CoffeeConnect offers functions to suit every requirement in the areas of machine management, maintenance and operation, and business performance. These functions are available in the form of either dashboard monitoring or reports. Additionally, our experts can create tailor-made analysis according to your needs, allowing you to take advantage of sophisticated Business Intelligence to gain in-depth insights into your coffee business.

DATA SECURITY

We know that your data is crucial to your business success. That is why the platform we have developed for WMF CoffeeConnect meets state-of-the-art infrastructure standards. The service offering is protected against cybercrime by a multi-layered IT architecture, providing end-to-end security. We have also implemented a cutting-edge Identity and Access Management system that supports IoT requirements, providing multi-factor and role-based access to data and systems.



HACCP COMPLIANCE

All WMF professional coffee machines support HACCP-compliant operation with ease. For example, cleaning records are available to download, complete data backups can be performed, and software updates are available via USB stick.

Technical Data Overview

ALL THE FACTS AND FIGURES YOU NEED



WMF 1500 S+	BASIC MILK	EASY MILK	DYNAMIC MILK
Recommended for an average daily requirement of*	180 cups		
Nominal power rating / mains power connection	2.75 - 3.5 kW / 220 - 240 V		
Output per hour according to DIN 18873-2			
Espresso / 2 espressi	124 / 194 cups		
Café crème / 2 café crèmes	96 / 122 cups		
Cappuccino / 2 cappuccinos	124 / 194 cups		
Cold milk beverages	-	√	√
Cold milk foam beverages	-	-	√
Total hot water output / hour	143 cups		
Energy loss per day according to DIN 18873-2	1.29 kWh	1.37 kWh	2.10 kWh
Coffee bean hoppers	Right and left approx. 1100 g, central approx. 700 g		
Choc or topping hopper (optional)	Approx. 2000 g		
External dimensions (width / height** / depth)	325 / 716 / 590 mm		
Water supply	Water tank (approx. 4.5 l) or fixed water supply		
Empty weight (depending on the model)	32 - 36 kg		
Continuous sound pressure level (LpA)***	< 70 dB(A)		

The WMF 1500 S+ is available with the following milk and steam systems:

	BASIC MILK	EASY MILK	DYNAMIC MILK
BASIC STEAM	√	√	√

* Output is determined using a machine with constant water supply and is dependent on cup size, quality settings, spout, model and nominal power rating. The recommended maximum daily capacity is based on our catalogued service concept. However, these average values serve merely as a guideline. Let our trained WMF team match the ideal coffee machine design to your specific needs.

** Height including coffee bean hoppers
 *** The A-rated sound pressure level LpA (slow) and LpA (impulse) at operating personnel work stations is under 79 dB(A) in any operating mode. Above 5° dKH (carbonate hardness), a WMF water filter must be fitted.

BASIC MODELS	BASIC MODEL 1	BASIC MODEL 2	BASIC MODEL 3
Basic Milk	√	-	-
Easy Milk	-	√	-
Dynamic Milk	-	-	√
Basic Clean (water tank)	√	-	-
Plug+Clean (fixed water connection)	√	-	-
Easy Clean	-	√	-
Clean in Place	-	-	√

Features included in basic model 1, 2 and 3:

1 grinder, SteamJet, Jet Option, Basic Steam, hot water outlet, LED illumination, Dynamic Coffee Assist, automatically height-adjustable spout

Selectable options at an additional charge:

2nd grinder, choc/topping hopper, twin choc/twin topping, automatically height-adjustable spout - only by Dynamic Milk, FFC, Syrup configuration

WMF Services

PROVEN EXCELLENCE
AROUND THE GLOBE

At WMF, we are committed to your success and therefore offer service solutions that help our customers all over the world to get the best out of their machine.

Whatever the challenge, we provide the solution

As coffee is served in many different environments, our customer base is quite diverse. With almost 100 years of experience, WMF understands the challenges our customers face like nobody else. This wealth of experience is the basis for all our service designs.

CUSTOMER SATISFACTION



Machine Availability

Your ability to serve your customers at all times.



Coffee Quality

Serving your customer a premium and consistent coffee quality.

DAY-TO-DAY OPERATIONS



Operational Skills

Making sure machine and staff work hand in hand to please your customers.



Regulatory Compliance

Staying compliant with health, safety, security and environmental regulations.

COMMERCIAL SUCCESS



Plannable Follow-up Costs

Avoiding surprises and finding the right level of commercial stability.

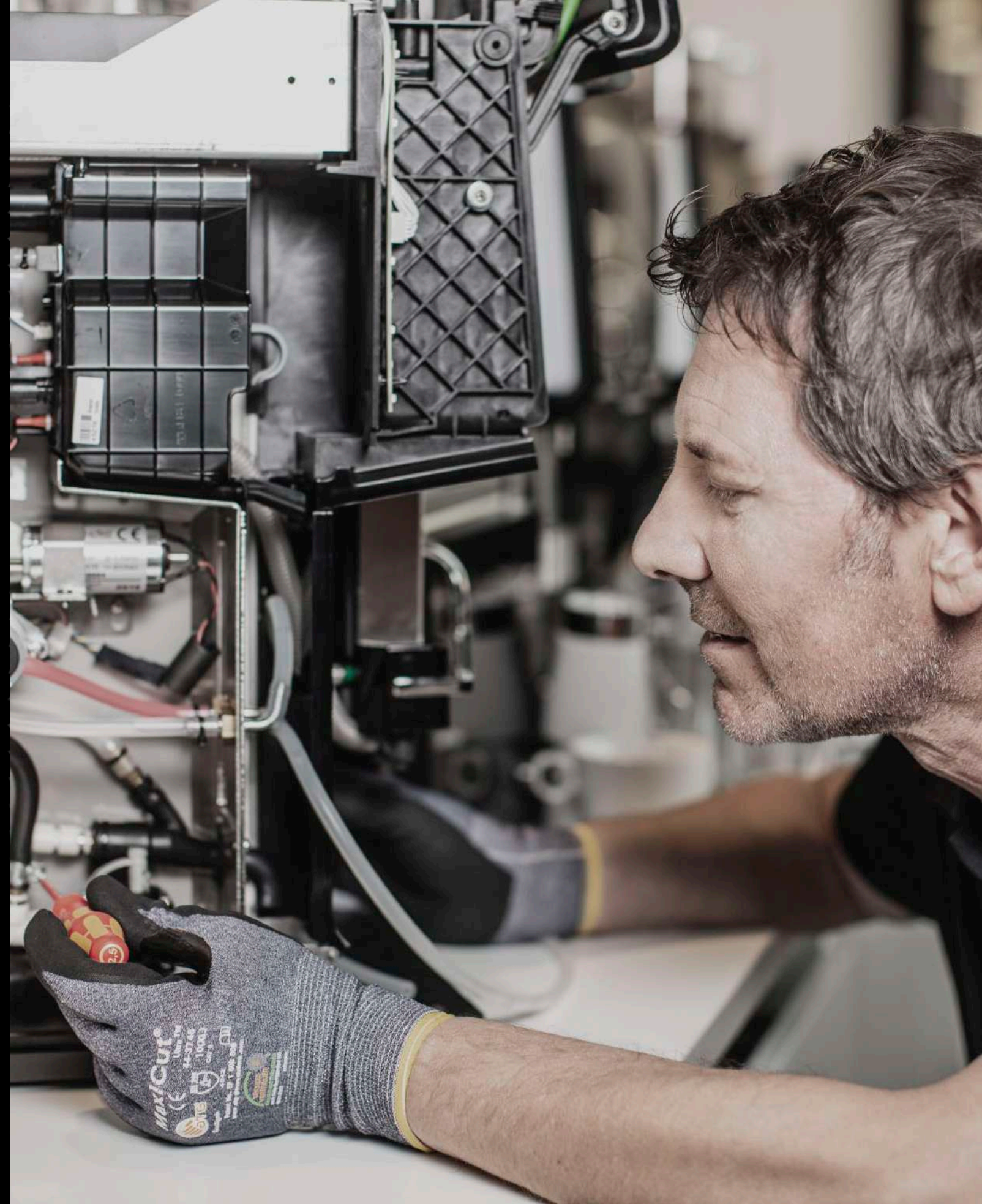


Investment Protection

Maximising the lifetime of your coffee machine.

For a long life of reliable performance

WMF coffee machines are a quality product and, together with our services, will perform over a very long lifetime. Truly understanding our customers' needs, we have developed standard service packages and add-ons that can be perfectly combined to satisfy your individual requirements. The fact that we only get one chance to make a first impression inspired the design of our installation services to deliver the right start to your success. Our preventive maintenance will ensure your machine always achieves its optimum performance, while we are by your side when you need us most with our repair services.



Accessory Equipment

EXTEND AND ENHANCE
YOUR WMF COFFEE MACHINE.

Combining elegance and intelligence, each WMF accessory is designed to complement your WMF 1500 S+ perfectly and enhance the experience for operating personnel and coffee consumers alike.

Choose from a range of high-quality WMF accessories to complete your coffee offering. Pre-heating cups to the right temperature is crucial for enjoying coffee specialities of the highest quality, while cooling milk to the optimum temperature for conservation is every bit as important. The addition of syrups can offer your customers even more choice. Our range of accessories for the WMF 1500 S+ includes attractive Cup Racks and Coolers, combination Cup&Cool units, and a stylish Syrup Station. Naturally, as you would expect from WMF, every item is beautifully coordinated with the design of your coffee machine.



	MILK COOLER	CUP&COOL NARROW	CUP RACK NARROW	SYRUP STATION
Capacity	-	45 to 190 cups	60 to 260 cups	1 - 4 bottles
Removable milk container capacity	6.5 litres	4.5 litres	-	-
Illumination	-	√	√	-
Lockable	√	√	-	√
Removable seal	√	√	-	√
Shelves	-	3 heatable shelves	4 heatable shelves	-
External dimensions (W / H / D)	230 / 353 / 530 mm	286 / 530 / 566 mm	286 / 530 / 539 mm	261 / 530.5 / 469 mm
Power supply	0.08 kW / 220 - 240 V	0.15 kW / 220 - 240 V	0.15 kW / 220 - 240 V	-
Sensor Milk empty message	Optional	Optional	-	-
Sensor Milk temperature	Optional	Optional	-	-
Suitable for self-service	√	√	√	√
Thermostat	√	√	√	-
Empty weight	Approx. 16 kg	Approx. 32 kg	Approx. 28 kg	Approx. 16 kg

WMF PhotoSimu App

VISUALIZE YOUR WMF COFFEE MACHINE
IN YOUR BUSINESS.

Want to know what a WMF professional coffee machine would look like in your own place of business? With the WMF PhotoSimu app, you can use your smartphone or tablet to easily project your chosen product configuration in your own business – exactly as it would appear. Just download the app to get started.

Download the app with the help of the QR code, scan then the location where you want to place your machine and you are ready to go. Thanks to Augmented Reality you will see your preferred machine either in a 3D room or in your real environment, photorealistic and true to its actual dimensions and design. The option to add accessories gives you the chance to see the complete solution of coffee machine and equipment in your business – ingeniously easy and intuitive.

Thanks to our new features, you can now find full product information at a glance and contact us directly via the app to send us your request.

iOS



Android



Contact Details

GET IN TOUCH TO FIND OUT MORE



A
WMF GmbH
 WMF Platz 1
 73312 Geislingen/Steige

 +49 7331 258 482
 PCM@wmf.com
 www.wmf-coffeemachines.com

B
WMF Austria
 Langer Weg 28
 6020 Innsbruck

 +43 512 3302
 gastro@wmf.at
 www.wmf-kaffeemaschinen.at

C
WMF in Switzerland
 Allmendweg 8
 4528 Zuchwil

 +41 32 681 62 00
 vertrieb.schweiz@schaerer.com

D
SEB PROFESSIONAL BeLux BV
 Halfstraat 5_18
 B-2630 Aartselaar | Belgium

 +32 828 11 28
 Belgium@seb-professional.com
 www.wmf-coffeemachines.com/nl_be

G
SEB PROFESSIONAL France SARL
 16-18 rue Dubrunfaut
 75012 Paris | France

 +33 1 49 80 80 10
 France@seb-professional.com
 www.wmf-coffeemachines.fr

J
SEB PROFESSIONAL (Shanghai) Co., Ltd.
 1318 North Sichuan Road, ICP, Unit 1101
 200080 Shanghai

 +86 21 2601 6308
 China@seb-professional.com
 www.wmf-coffeemachines.com

E
SEB PROFESSIONAL Iberia S.A.
 Avda. Llano Castellano, 15
 28034 Madrid | España

 +34 91 3341216
 Spain@seb-professional.com
 www.wmf-coffeemachines.es
 www.wmf.com

H
SEB PROFESSIONAL Nederland B.V.
 Gyrocoopweg 82-84
 1042 AX Amsterdam
 Showroombezoek op afspraak
 +31 20 480 80 85
 Netherlands@seb-professional.com
 www.wmf-coffeemachines.com/nl_nl

K
SEB PROFESSIONAL LATAM & Caribbean
 Guadalupe 10801 | P.O Box 75-2120 |
 Goicoechea, San Jose | Costa Rica

 +506 7016 9885
 LATAM@seb-professional.com
 www.wmf-coffeemachines.com

F
SEB PROFESSIONAL UK Limited
 31 Riverside Way
 UB8 2YF Uxbridge

 +44 1895 816100
 UK@seb-professional.com
 www.wmf-coffeemachines.uk.com

I
SEB PROFESSIONAL Japan
 13F Hamarikyu Parkside Place
 5-6-10 Tsukiji, Chuoku Tokyo, 104-0045

 +81 3 3541 1941
 Japan@seb-professional.com
 www.wmf-japan.co.jp

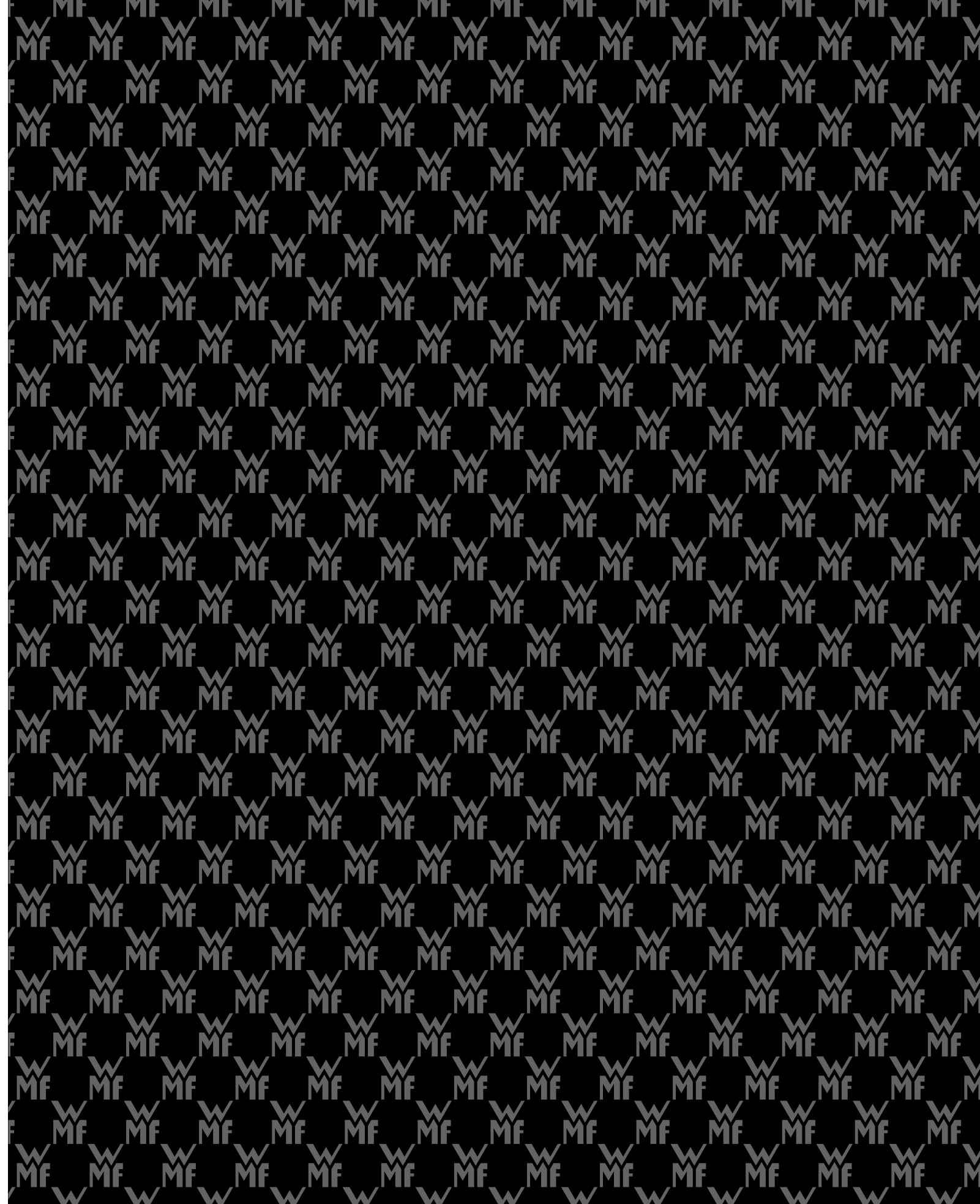
L
SEB PROFESSIONAL North America
 15501 Red Hill Avenue, Suite 200
 Tustin, California 92648

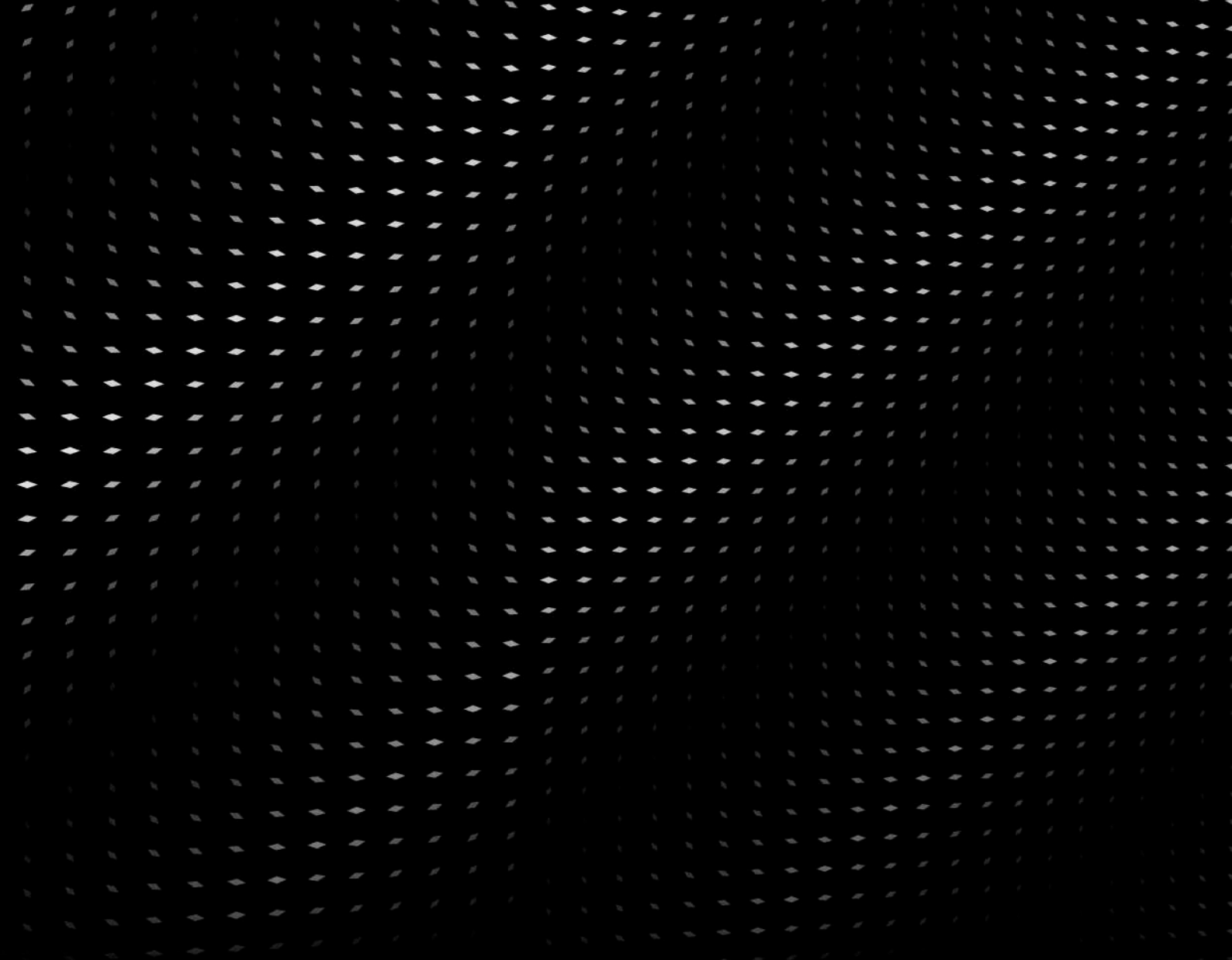
 +1 888 496 3435
 NorthAmerica@seb-professional.com
 www.wmf-coffeemachines.us.com

WMF GmbH
GBU Professional Coffee Machines PCM
WMF Platz 1
73312 Geislingen/Steige
Germany
Phone: +49 73 31 - 258 482
Fax: +49 73 31 - 258 792
PCM@wmf.com
www.wmf.com

63.8383.0391
All technical changes, typographical mistakes
and errors reserved for the entire contents.

Germany 07.2021





DESIGNED TO PERFORM

wmf.com