

Consignes de sécurité et d' utilisation : Robot Cook® Safety and Operating Instructions: Robot Cook® Veiligheidsvoorschriften en gebruiksaanwijzing: Robot Cook® Sicherheits- und Gebrauchshinweise: Robot Cook®

Lire attentivement la notice avant toute utilisation.
 Read carefully user manual before using.
 Lees deze gebruiksaanwijzing voor het gebruik zorgvuldig door.
 Vor dem Gebrauch sorgfältig die Bedienungsanleitung lesen.

robot coupe®
 www.robot-coupe.com

Mise en marche et utilisation / Safety and Operating Instructions: Robot Cook® / Inbedrijfstelling en gebruik / Inbetriebnahme und Gebrauch



ON / OFF
 Alimentation électrique
 ON / OFF switch
 Power supply
 ON / OFF
 Elektrische voeding
 AN / AUS
 Stromversorgung



Le code Axx affiché au démarrage signifie la version du logiciel. / The code Axx, displayed when the machine is switched on, indicates the software version. / De Axx-code, weergegeven wanneer de machine wordt ingeschakeld, geeft de softwareversie aan. / Die Anzeige Axx beim Einschalten des Gerätes verweist auf die Software-Version.

Tableau de commande / Control Panel / Bedieningspaneel / Bedienfeld

Zone d'exécution / Settings / Bedieningszone / Bedienbereich



Bouton Arrêt
 Power Off Button
 UIT
 Ausschalttaste



Bouton Marche
 Power On Button
 AAN
 Einschalttaste



Bouton rotatif / Rotary Dial
 Draaiknop / Drehregler



Fonction Pulse / Turbo 4500 tr/min
 Turbo / Pulse Button > 4500 rpm
 Pulse / Turbo 4500 tpm
 Moment/Turbo-Schalter 4500 U/min

Zone de réglage / Settings / Regelzone / Einstellbereich



Fonction Petite et Grande puissance de chauffe
 Low and High Heat Function
 Laag en Hoog verwarmingsvermogen
 Niedrige und hohe Heizkraft



Fonction Vitesse
 Speed Function
 Snelheid
 Drehzahl



Fonction Timer
 Timer Function
 Timer
 Timer



+ 3500
 Vitesse > 3500 tr/min
 Speed > 3500 rpm
 Snelheid > 3500 tpm
 Drehzahl > 3500 U/min

O > -500 R-MIX
 Fonction mélange
 Blend Speed
 Mengen
 Mischen

OIOIO
 Fonction intermittente:
 maintien en température
 Intermittent Speed:
 Heating Precision
 Intermittierende snelheid:
 warm houden
 An/Aus-Betrieb:
 Warmhaltefunktion

Zone de programmation / Programming / Programmeerzone / Programmierbereich



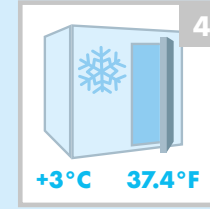
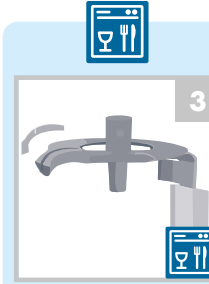
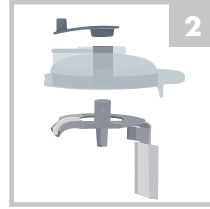
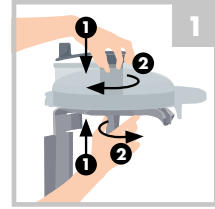
9 programmes / 9 programmes / 9 programma's
 9 Programme



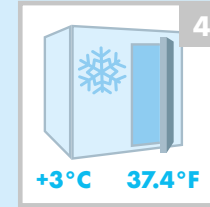
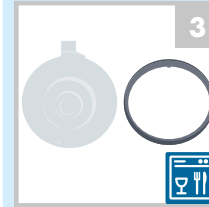
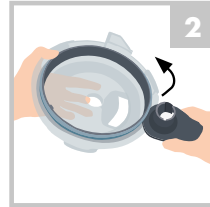
Étapes pour chaque programme / Steps for each
 programme / Stappen voor elk programma / Schritte für
 jedes Programm

Nettoyage et entretien / Cleaning and maintenance Reiniging en onderhoud / Reinigung und Wartung

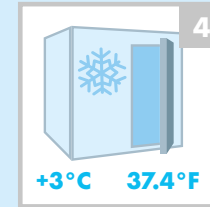
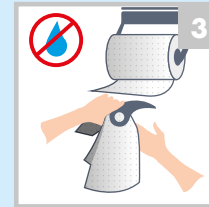
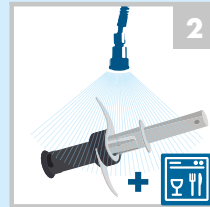
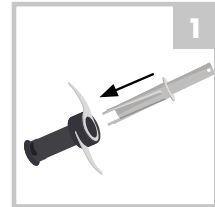
Bras racleur / Scraper / Schraaparm /
 Abstreifer



Couvercle / Lid / Deksel / Deckel



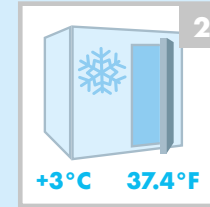
Couteau / Blade / Mes / Messer



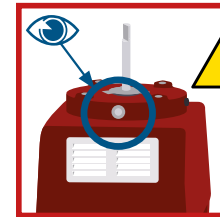
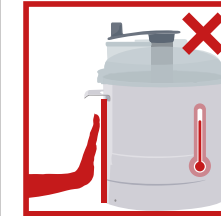
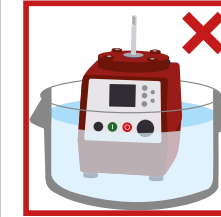
Contacts de température / Temperature
 contact points / Temperatuurcontacten /
 Temperaturkontakte



Cuve / Bowl
 Kuip / Schüssel



Sécurité / Safety / Veiligheid / Sicherheit



Ne jamais essayer de supprimer les systèmes de verrouillage et de sécurité.

Never try to remove the locking and safety systems.

Probeer nooit de vergrendelings- en beveiligingssystemen buiten werking te stellen.

Niemaals versuchen, die Verriegelungs- oder Sicherheitsvorrichtungen zu umgehen.

Consignas de seguridad y empleo: Robot Cook®
Instruções de segurança e de utilização: Robot Cook®
Istruzioni di sicurezza e di utilizzo: Robot Cook®
Рекомендации по технике безопасности и использованию: Robot Cook®

Leer atentamente las instrucciones antes de usar el aparato.
 Leia atentamente o folheto de instruções antes de qualquer utilização.
 Leggere attentamente le istruzioni prima dell'uso.
 Внимательно ознакомьтесь с рекомендациями перед началом использования аппарата.

Puesta en marcha y empleo / Colocação em funcionamento e utilização / Accensione e utilizzo / Запуск и использование



ON / OFF
 Alimentación eléctrica
 ON / OFF
 Alimentação elétrica
 ON / OFF
 Alimentazione elettrica
 Вкл./Выкл.
 Электрическое питание



El código Axx, que aparece cuando la máquina se enciende, indica la versión de software. / O código Axx, exibido ao ligar a máquina, indica a versão do software. / Il codice Axx che si visualizza quando la macchina è accesa, indica la versione del software. / Код Axx, отображаемый при включении машины, указывает на версию программного обеспечения.

Panel de mandos / Painel de controlo / Quadro comandi / Панель управления

Zona de ejecución / Zona de execução / Pulsanti / Кнопки управления



Botón de parada
 Botão Desligar
 Pulsante arresto
 Кнопка « Стоп »



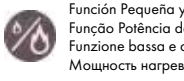
Botón de marcha
 Botão Ligar
 Pulsante accensione
 Кнопка « Пуск »



Función Pulse / Turbo 4500 rpm
 Função Pulse / Turbo 4500 rpm
 Funzione a impulso / Turbo 4500 giri/min
 Импульсное управление / Турбо 4500 об./мин

Rueda / Botão rotativo
 Pulsante girevole / Поворотный регулятор

Zona de ajuste / Zona de regulação / Zona di regolazione / Кнопки регулировки



Función Pequeña y gran potencia de calentamiento
 Função Potência de aquecimento Pequena e Grande
 Funzione bassa e alta potenza di riscaldamento
 Мощность нагрева: малая и большая



Función Velocidad
 Função Velocidade
 Funzione Velocità
 Скорость



Función Cronómetro
 Função Timer
 Funzione Timer
 Таймер



+ 3500
 Velocidade > 3500 rpm
 Velocidade > 3500 rpm
 Velocità > 3500 giri/min
 Скорость > 3500 об./мин

O > -500 R-MIX OIOIO
 Función Mezcla
 Função misturar
 Funzione miscelazione
 Функция « Смешивание »
 Función intermitente:
 conservação à temperatura
 Funzione intermitente:
 conservazione à temperatura
 Поддержка температуры

Zona de programación / Zona de programação / Zona di programmazione / Кнопки выбора программ



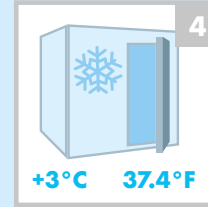
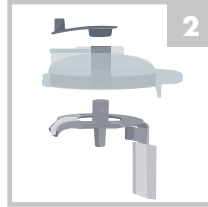
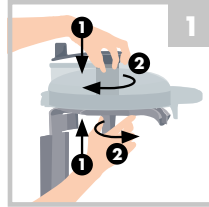
9 programas / 9 programas / 9 programmi / 9 программ



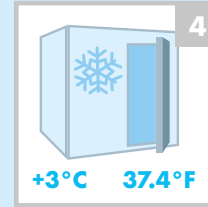
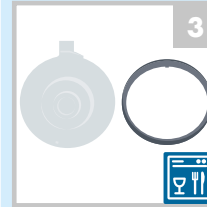
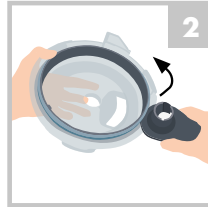
Etapas para cada programa / Etapas para cada programa / Fase per ogni programma / Этапы для каждой программы

Limpieza y mantenimiento / Limpeza e conservação / Pulizia e manutenzione / Чистка и уход

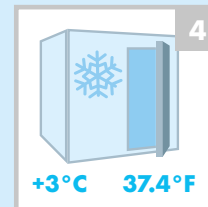
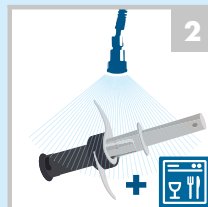
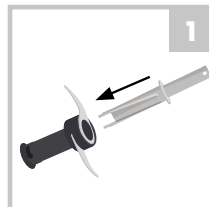
Brazo rascador / Braço raspador / Pala raschiatrice / Скребок



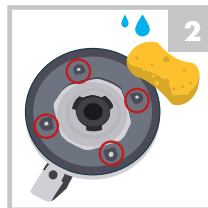
Tapa / Tampo / Coperchio / Крышка



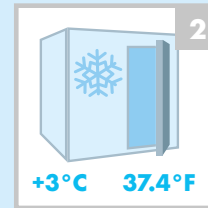
Cuchilla / Lâmina / Coltello / Нож



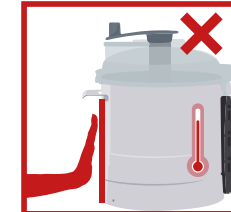
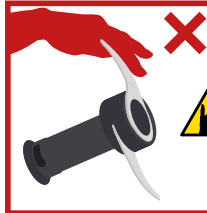
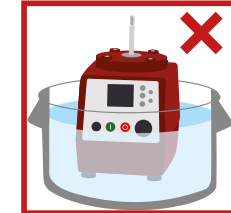
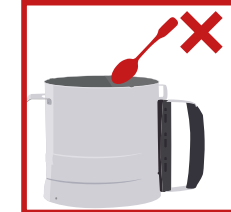
Contactos de temperatura / Contactos de temperatura / Contatti di temperatura / Температурные датчики



Cuba / Recipiente Vasca / Чаша



Seguridad / Segurança / Sicurezza / Безопасность



No tratar nunca de suprimir los sistemas de bloqueo y seguridad.

Nunca tente suprimir os sistemas de bloqueio e de segurança.

Non cercare in alcun caso di eliminare i sistemi di blocco e di sicurezza.

Никогда не отключать системы блокировки и защиты