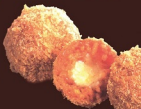


# Automatic Encrusting and Forming Machine (SD-97W)

**ANKO®** 全自動包餡成形機 **ISO 9001 APPROVED**



Special filling device produces various stuffed food product, such as vegetable bun, meat bun, stuffed cookie, rice cake, rice ball, mochi, crystal bun, mooncake, kubba, coxinha, mammoul, etc. Shutters are easy to change. There are deep pattern, light pattern and special patterns for choice.



# Automatic Encrusting and Forming Machine (SD-97W) 全自動包餡成形機

## Specification

Dimension	尺寸	1,300(L)x815(W)x1,700(H) mm
Electricity	電力	220 V, 50/60 Hz, Single Phase, 1.08 kW
Net Weight	淨重	265 kgs
Capacity	產量	2,500-4,200 pcs/hr
Product weight	產品重量	15-70 g (Round Shape)

\* Production capacity is for reference only; it will change due to product specification and recipe.

\* Specifications are subject to change without notice.

## Features

- Various Filling
- Fillings can be bean paste, peanut, powder, minced meat, sesame paste.
- 5 programmable memories
- Synchronize function
- Steps start function
- Dough and filling increase simultaneously
- Conveyor speed control with timer function
- Resettable counter display

Capable of producing various shapes and bicolor via special bicolor dough transmitting system



Spherical Encrusting



Weight Range (15-70g)



Bar Shape Encrusting



Variable Encrusting Ratio



Continuous Cylindrical Extrusion



Length Range

## Advantage

- Price is reasonable.
- Capacity is high.
- It is easy for operation, cleaning, assembly, and repairing.
- Special filling system can apply both wet and dry fillings.
- Different materials can be applied for the encrusting product skin, such as :
  - (1) Beef + bulgur => for Kubba/Kibbe
  - (2) All purpose flour, high gluten flour, yeast dough => for different buns
  - (3) Rice starch dough => for tangyuan, rice ball, and mochi
  - (4) Cookie dough => for cookies
- Specially designed dough extruding device does less damage to the dough texture, which gives better result to product.
- It requires small space for operation.



安口食品機械股份有限公司  
ANKO FOOD MACHINE CO., LTD.

237 新北市三峽區中正路一段351號  
No.351, Sec. 1, Zhongzheng Rd., Sanxia Dist.,  
New Taipei City 237, Taiwan  
TEL : 886-2-26733798 FAX : 886-2-26733697  
E-mail : anko@anko.com.tw  
Website : www.anko.com.tw

ANKO FOOD TECH INC.

300 South Walnut Ave, Suite 405,  
San Dimas, California 91773, U.S.A  
TEL : 1-909-599-8186  
Email : anko@ankofoodtech.com  
Website : www.ankofoodtech.com

NINGBO ANKO FOOD MACHINERY CO., LTD.

FAX : +86-574-87580981



SD-97W-150S