

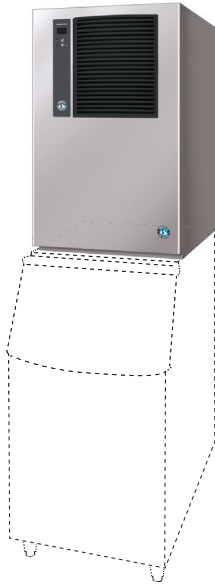


# HOSHIZAKI

## IM-240ANE (-23) / IM-240AWNE CUBE ICE MAKER

### Product Description

The IM-240ANE (-23) (air cooled) and the IM-240AWNE (water cooled) are modular cube ice maker. These products produce up to 240kg per 24 hours and can be used in combination with all available bins.



- A closed water circuit offers the ultimate contamination protection, by reducing the number of points at which impurities can enter the ice making process.
- Hoshizaki ice makers are micro computer controlled, controlling the ice making process to perform at its best under varying circumstances, without having to make physical adjustments.
- A stainless steel exterior provides a hygienic and high quality finish.
- Foam injected polyurethane for insulation (HFC free), helps preserve the quality and consistency of the ice produced, reducing the number of production cycles.
- An easily cleanable air filter allows end users to carry out a routine cleaning schedule, extending product life expectancy and reducing the frequency and costs of maintenance call-outs.

### Available Models

IM-240ANE (Air Cooled)
IM-240ANE-23 (Air Cooled)
IM-240AWNE (Water Cooled)
IM-240ANE-21 (Air Cooled)
IM-240AWNE-23 (Water Cooled)
IM-240AWNE-21 (Water Cooled)

### Ice Cubes

Model	Size	Shape
IM-240ANE	Cube Approx. 28 x 28 x 32 mm	
IM-240ANE-23	Cube Approx. 28 x 28 x 23 mm	
IM-240AWNE	Cube Approx. 28 x 28 x 32 mm	

### Bins

Model	Type of Bin	Max. Bin Capacity
B-301SA	Modular	144 kg
B-501SA, Top Kit TK 8 D		217 kg
B-801SA, Top Kit TK 8 D + TK 18 D		348 kg

### Production

Model	Ice Production per 24h (Dimple Size)	Temperature	Ice Production per Cycle	Water Consumption per 24h
IM-240ANE	Approx. 220 (5mm) / 240 (15mm) kg Approx. 205 (5mm) / 230 (15mm) kg Approx. 160 (5mm) / 190 (15mm) kg	AT.10 °C, WT.10 °C AT.21 °C, WT.15 °C AT.32 °C, WT.21 °C	Approx. 3,2kg/140pcs	Approx. 0,73m <sup>3</sup> Approx. 0,36m <sup>3</sup> Approx. 0,28m <sup>3</sup>
IM-240ANE-23	Approx. 180 (5mm) / 225 (15mm) kg Approx. 175 (5mm) / 215 (15mm) kg Approx. 165 (5mm) / 195 (15mm) kg	AT.10 °C, WT.10 °C AT.21 °C, WT.15 °C AT.32 °C, WT.21 °C	Approx. 2,38kg/140pcs	Approx. 0,80m <sup>3</sup> Approx. 0,40m <sup>3</sup> Approx. 0,38m <sup>3</sup>
IM-240AWNE	Approx. 230 (5mm) / 240kg (15mm) Approx. 215 (5mm) / 225kg (15mm) Approx. 205 (5mm) / 215kg (15mm)	AT.10 °C, WT.10 °C AT.21 °C, WT.15 °C AT.32 °C, WT.21 °C	Approx. 3,2kg/140pcs	Approx. 0,76m <sup>3</sup> Approx. 0,37m <sup>3</sup> Approx. 0,36m <sup>3</sup>

### Two year warranty

For more information visit our website at [www.hoshizaki-europe.com](http://www.hoshizaki-europe.com)  
Hoshizaki Europe B.V. retains the right to change products and their specifications without prior notice.

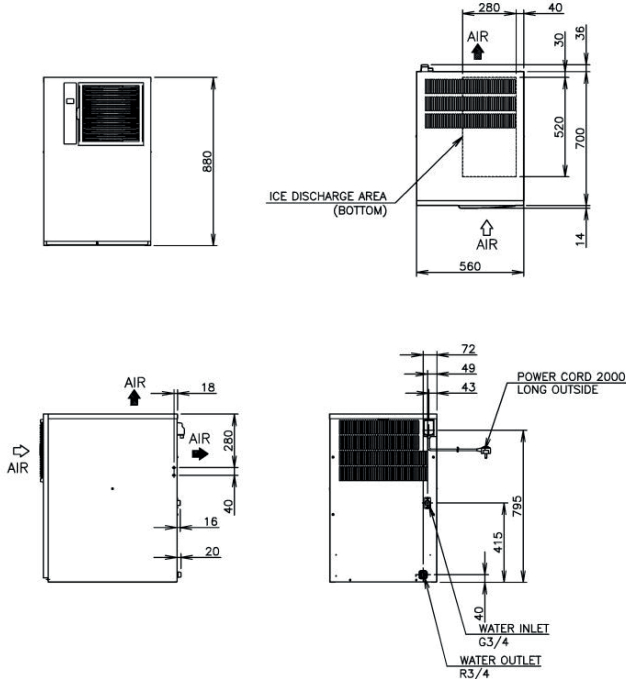




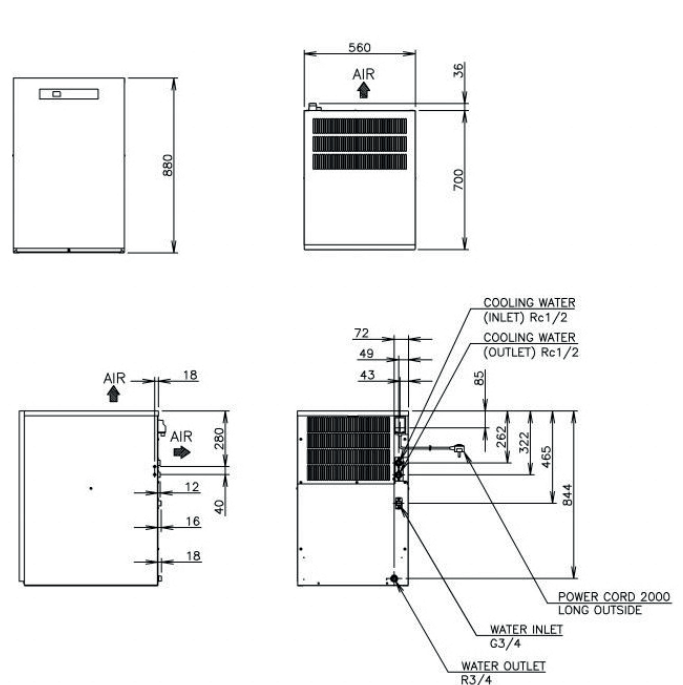
# HOSHIZAKI

## IM-240ANE (-23) / IM-240AWNE CUBE ICE MAKER

IM-240ANE



IM-240AWNE



Specification	IM-240ANE	IM-240ANE-23	IM-240AWNE
<b>Ac Supply Voltage</b>	1 PHASE 220-240V 50Hz	1 PHASE 220-240V 50Hz	1 PHASE 220-240V 50Hz
<b>Amperage (AT.32°C, WT.21°C)</b>	6.6A	6.6A	6.3A
<b>Starting Amperage</b>	31A	35A	35A
<b>Electric Consumption (AT.32°C, WT.21°C)</b>	1320W	1320W	1300W
<b>Freeze Cycle Time (AT.21°C, WT.15°C)</b>	Approx. 20min	Approx. 17min	Approx. 19min
<b>Exterior</b>	Stainless Steel	Stainless Steel, Galvanized Steel (Rear)	Stainless Steel
<b>Insulation Foam Blowing Agent</b>	Water Blown	Water Blown	Water Blown
<b>Connections-Electric</b>	X-Type Con.	X-Type Con.	X-Type Con.
<b>Connections-Water Supply</b>	Inlet 3/4" (connected at rear side)	Inlet 3/4" (connected at rear side)	Inlet 3/4" (connected at rear side)
<b>Connections-Drain</b>	Outlet 3/4" (connected at rear side)	Outlet 3/4" (connected at rear side)	Outlet 3/4" (connected at rear side)
<b>Ice Making System</b>	Closed Cell System	Closed Cell System	Closed Cell System
<b>Harvesting System</b>	Hot Gas Defrost	Hot Gas Defrost	Hot Gas Defrost
<b>Condenser</b>	Air-cooled, Fin and Tube type	Air-cooled, Fin and Tube type	Water-Cooled, Tube in Tube type
<b>Heat Rejection (AT.32°C, WT.21°C)</b>	2870W (2365kcal/h)	2870W (2365kcal/h)	-
<b>Evaporator</b>	Copper Tube on Sheet and Cells	Copper Tube on Sheet and Cells	Tin-plated Copper Tube on Sheet and Cells
<b>Refrigerant Control</b>	Thermostatic Expansion Valve	Thermostatic Expansion Valve	Thermostatic Expansion Valve
<b>Refrigerant Charge</b>	R404A 480 g	R404A 480 g	R404A
<b>Bin Control System</b>	Microswitch with Time Delay	Microswitch with Time Delay	Microswitch with Time Delay
<b>Ice Making Control System</b>	Thermistor, Timer	Thermistor, Timer	Thermistor, Timer
<b>Electrical Protection</b>	Class I Appliance, 5A Fuse	Class I Appliance, 5A Fuse	Class I Appliance, 5A Fuse
<b>Compressor Protection</b>	Auto-reset Overload Protector	Auto-reset Overload Protector	Auto-reset Overload Protector
<b>Ice Maker Protection</b>	Interlock by Controller Board	Interlock by Controller Board	Interlock by Controller Board
<b>Dimensions Product excl. Packaging</b>	560 x 700 x 880 (W x D x H, mm)	560 x 700 x 880 (W x D x H, mm)	560 x 700 x 880 (W x D x H, mm)
<b>Dimensions Product incl. Packaging</b>	680 x 820 x 1065 (W x D x H, mm)	680 x 820 x 1065 (W x D x H, mm)	680 x 820 x 1065 (W x D x H, mm)
<b>Weight Gross / Net</b>	91 kg / 80 kg	91 kg / 80 kg	94 kg / 83 kg

### Operation Conditions

<b>Ambient Temperature</b>	1 - 40°C
<b>Water Supply Temperature</b>	5 - 35°C
<b>Water Supply Pressure</b>	0,7-7,8 bar (0,07-0,78MPa)
<b>Voltage Range</b>	Rated Voltage ± 6%

### Accessories

Scoop
Installation Kit
Ice Chute

For more information please contact your local sales office:

Hoshizaki Belgium:  
Hoshizaki Deutschland:  
Hoshizaki France:  
Hoshizaki Iberia:  
Hoshizaki Middle East:

info@hoshizaki.be  
info@hoshizaki.de  
info@hoshizaki.fr  
info@hoshizaki.es  
sales@hoshizaki.ae

Hoshizaki Nederland:  
Hoshizaki United Kingdom:  
Other countries:

sales@hoshizaki.nl  
uksales@hoshizaki.co.uk  
sales@hoshizaki.nl

[www.hoshizaki-europe.com](http://www.hoshizaki-europe.com)