



Martellato



Your specialities, our passion.



AUTUMN - WINTER

2017

www.martellato.com



Novità Autunno - Inverno 2017
Autumn - Winter 2017

Dessert Idea	4
<i>Dessert Idea</i>	
Cake Idea	8
<i>Cake Idea</i>	
S.Mart	14
<i>S.Mart</i>	
Natale	22
<i>Christmas</i>	
Halloween	36
<i>Halloween</i>	
San Valentino	38
<i>Valentine's Day</i>	
Cioccolato	40
<i>Chocolate</i>	
Monouso	56
<i>Disposable</i>	
Attrezzature	60
<i>Equipment</i>	



*D*essert idea

La tradizione crea la modernità

Combinare gli elementi per dare vita a monoporzioni che, giocando con le proporzioni dei sapori, creano nuove armonie di gusto. Nasce con questo intento un progetto di dessert al piatto componibili, pensato per la ristorazione ma perfetto per la pasticceria moderna, che utilizzando semplici attrezzature consente risultati di alto livello. Monoporzioni che accostano diversi gusti, diverse consistenze, diversi colori per stimolare e soddisfare la voglia di assaggiare dei clienti, combinando misure e forme diverse.

Tradition creates modernity

Combine these elements for single portions that, by playing with the flavour proportions, create new taste harmonies. From this aim, a design for a modular dessert was born, designed for the restaurant industry but perfect for modern pastry-making, that allows for high level results using simple tools. Single portions to suit various tastes, consistencies, and colours that inspire and satisfy customers' desire to try something new, by combining different shapes and sizes.





Circle

Cod. 30IDEA01
Ø83 h 25mm ~ 130ml
Prod. 12 pcs



Rectangle

Cod. 30IDEA02
62x48 h 25mm ~ 70ml
Prod. 18 pcs



Log

Cod. 30IDEA03
118x47 h 25mm ~ 130ml
Prod. 9 pcs



Tagliapasta - Cutter
Cod. TPIDEA01



Tagliapasta - Cutter
Cod. TPIDEA02



Tagliapasta - Cutter
Cod. TPIDEA03



Triangle

Cod. 30IDEA04
42x38 h 25mm ~ 25ml
Prod. 48 pcs



Dot

Cod. 30IDEA05
Ø35 h 25mm ~ 25ml
Prod. 48 pcs



Square

Cod. 30IDEA06
30x30 h 25mm ~ 25ml
Prod. 48 pcs

Conf./Pack:
3 barre/bars
1 estrattore/extractor





LE COMPONENTI INOX

**TANTE FORME, MOLTE COMBINAZIONI,
CREATIVITÀ ILLIMITATA.**

Le fasce inox componibili consentono la preparazione di un unico dolce che accontenta diverse richieste. Con i Kit per inserti e basi l'effetto sarà ancora più spettacolare.

**MANY SHAPES, MANY COMBINATIONS,
UNLIMITED CREATIVITY.**

The stainless steel modular ring allow you to create unique desserts depending on what you need. Use the inserts and bases kits for an even more special effect.





Demi **New**

Cod. **39H4X20S**
Size: Ø180 h40 mm
985ml - Pack 2 pcs

Cod. **39H4X24S**
Size: Ø220 h40 mm
1473ml - Pack 2 pcs



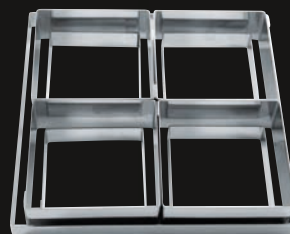
Cod. **39KITH4X20**
KIT COMPONENTI 20cm
985ml - Pack 6 pcs

Cod. **39KITH4X24**
KIT COMPONENTI 24cm
1473ml - Pack 6 pcs

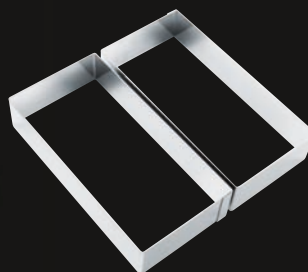


4 Taste

Cod. 38H4X22S
Misura - Size: 200x200 h40 mm
1500ml - Pack 4 pcs

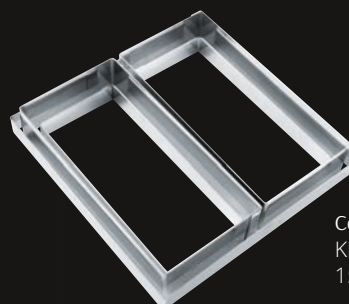


Cod. 38KITH4X22
KIT COMPONENTI 22cm
1500ml - Pack 9 pcs



Double

Cod. 37H4X22S
Misura - Size: 200x200 h40 mm
1500ml - Pack 2 pcs



Cod. 37KITH4X22
KIT COMPONENTI 22cm
1500ml - Pack 5 pcs



Moon

Cod. **36H4X22S**
Misura - Size: Ø200 h40 mm
1000ml - Pack 2 pcs



Cod. **36KITH4X22**
KIT COMPONENTI Ø 22cm
1000ml - Pack 5 pcs



Duetto

Cod. 33H4X20S
Misura - Size: Ø200 h40 mm
950ml - Pack 2 pcs

Cod. 33H4X24S
Misura - Size: Ø240 h40 mm
1400ml - Pack 2 pcs



Cod. 33KITH4X20
KIT COMPONENTI Ø 22cm
950ml - Pack 6 pcs

Cod. 33KITH4X24
KIT COMPONENTI Ø 26cm
1400ml - Pack 6 pcs



Heart

Cod. 35H4X14S
Misura - Size: Ø140 h40 mm
530ml - Pack 2 pcs

New size

Cod. 35H4X19S
Misura - Size: Ø190 h40 mm
1000ml - Pack 2 pcs



New size

Cod. 35KITH4X19
KIT COMPONENTI Ø 19cm
1000ml - Pack 4 pcs



Twins

Cod. 34H4X16S
Misura - Size: 160x160 h40 mm
950ml - Pack 2 pcs

Cod. 34H4X20S
Misura - Size: 200x200 h40 mm
1400ml - Pack 2 pcs



Cod. 34KITH4X16
KIT COMPONENTI 18cm
950ml - Pack 6 pcs

Cod. 34KITH4X20
KIT COMPONENTI 23cm
1400ml - Pack 6 pcs



Trilogy

Cod. 32H4X18S
Misura - Size: Ø180 h40 mm
950ml - Pack 3 pcs

Cod. 32H4X22S
Misura - Size: Ø220 h40 mm
1400ml - Pack 3 pcs



S.MART

YOUR EASY DESSERT

PRATICI, VELOCI E FACILI:

Gli stampi termoformati consentono di realizzare in pochi semplici passaggi, semifreddi che si raffreddano perfettamente in tempi brevi e facilmente si sformano.

PRACTICAL, QUICK AND EASY:

In a few simple steps, the thermoformed moulds allow you to create semifreddo desserts that cool perfectly in a short time and that are easy to turn out.



HEART

Cod. 30SS06
Misura - Size: 171x162 h48 mm
815 ml - Pack 4 pcs



Cod. 70H2X19 - BASE
Misura - Size: 191x182 h20 mm

Cod. 70H2X13 - INSERT
Misura - Size: 132x125 h20 mm



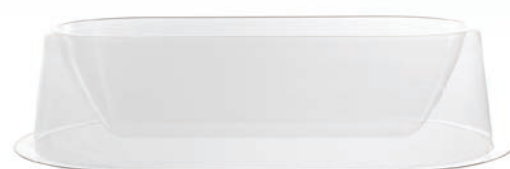


SMART QIANDUIA

Cod. 30SS05
Misura - Size: 245x79 h75 mm
850 ml - Pack 4 pcs

Cod. 21H2X26G - BASE
Misura - Size: 265x98 h20 mm

Cod. 21H2X20G - INSERT
Misura - Size: 200x36 h20 mm



S.MART

YOUR EASY DESSERT



CIRCLE

Cod. 30SS01
Misura - Size: Ø180 h50 mm
1200 ml - Pack 4 pcs



Cod. 1H2X20 - BASE
Misura - Size: Ø200 h20 mm

Cod. 1H2X16 - INSERT
Misura - Size: Ø160 h20 mm





CARRE²

Cod. 30SS02
Misura - Size: 180x180 h50 mm
1500 ml - Pack 4 pcs



Cod. 5H2X20 - *BASE*
Misura - Size: 200x200 h20 mm

Cod. 5H2X16 - *INSERT*
Misura - Size: 160x160 h20 mm





GIANDUIA

Cod. 30SS04
Misura - Size: 284x116 h80 mm
1400 ml - Pack 4 pcs



Cod. 21H2X31 - BASE
Misura - Size: 303x135 h20 mm

Cod. 21H2X23 - INSERT
Misura - Size: 230x63,5 h20 mm



S.MART

YOUR EASY DESSERT



OVAL

Cod. 30SS03
Misura - Size: 240x136 h60 mm
1400 ml - Pack 4 pcs



Cod. 21H2X26 - BASE
Misura - Size: 258x154 h20 mm

Cod. 21H2X21 - INSERT
Misura - Size: 216x112 h20 mm



Semifreddo



Teglia per tronchi
Log-shaped cake tray
30TT104S
10x40cm
80x355 h60 mm



Tappeto silicone
Silicone mat sheets
30TS000
360x163mm



Fogli acetato
Acetate sheets
NSA36X16
360x163mm
50 fogli - sheets



Stampi per inserti
Moulds for inserts
30TB3S
Kit 2 stampi plastica.
2 plastic moulds kit.
35x180 h30 mm



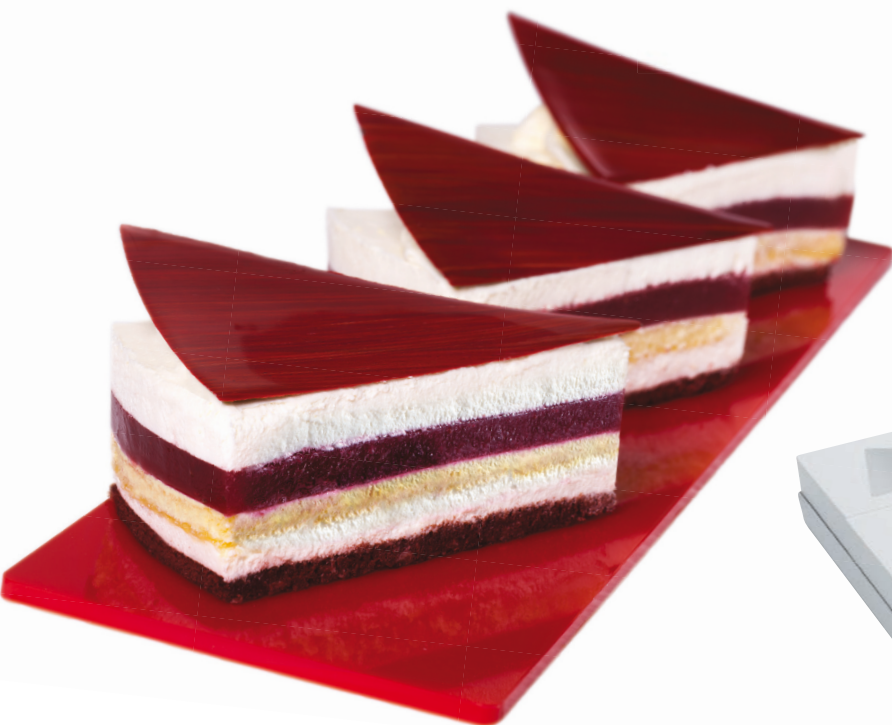
Little Cakes

Cod. *MONOP. C101*
 60x40cm
 5 Barre/Moulds
 Ø100 h 45mm



Tagliapasta - Cutter

Cod. *TPB1*
 h 30mm



Single Slice

Misura fetta - Slice size:
 117x62 h40 mm ~ 150 ml
 117x62 h30 mm ~ 112 ml
 12 fette/slices = 1 torta/cake Ø24cm

Cod. *MONOP. A0016*
 2 Barre/Moulds h 40mm

Cod. *MONOP. A016*
 2 Barre/Moulds h 30mm

Cod. *MONOP. B0016*
 3 Barre/Moulds h 40mm

Cod. *MONOP. B016*
 3 Barre/Moulds h 30mm

Cod. *MONOP. C0016*
 7 Barre/Moulds h 40mm

Cod. *MONOP. C016*
 7 Barre/Moulds h 30mm



Tagliapasta - Cutter

Cod. *TPG 16*
 h 3cm



Acetate tape

Cod. *NSA62X117*
 Pack 500 pcs



Christmas Tree - h 180

cod. 20A3D01

Thermoformed plastic
Ø112 h180 mm ~ 300gr
4 Moulds - Prod. 2 pcs



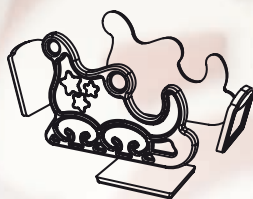
Christmas Tree



Christmas Tree - h 120

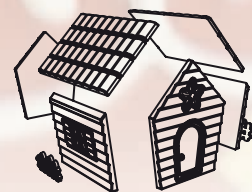
Cod. 20A3D02
Thermoformed plastic
Ø95 h120 mm ~ 300gr
4 Moulds - Prod. 4 pcs





Christmas Sledge

Cod. 20SL01
 Thermoformed plastic
 140x70 h 100mm ~150 gr
 2 Moulds - prod: 2 pcs



Sweet Home

Cod. 20HO01
 Thermoformed plastic
 108x116 h 118mm ~220 gr
 4 Moulds - prod: 2 pcs

Sweet Christmas



Chocolate Gift

Cod. 20PRO1
Thermoformed plastic
80x80 h 69mm ~110 gr
2 Moulds - prod: 2 pcs



Chocolate gift (Praline)

Cod. MA1991
Polycarbonate mould
26x26 h 20mm ~ 11gr
prod: 28 pcs

Christmas Cones

Stampi cono in plastica termoformata
per realizzare alberi o pièce in cioccolato.

Thermoformed Plastic moulds
to realize Christmas trees or chocolate pièce.



Tree - h 205

Cod. 20CO02
Thermoformed plastic
Ø123 h 205mm
Prod: 2 pcs



Tree - h 140

Cod. 20CO01
Thermoformed plastic
Ø83 h 140mm
Prod: 4 pcs

Xmas PUZZLE



Puzzle Christmas

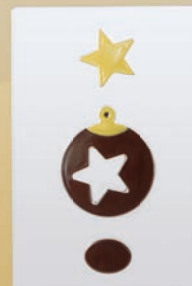
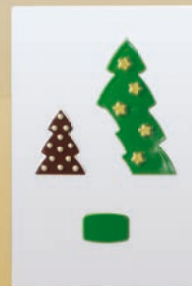
Cod. 20BC100

Thermoformed plastic - Conf. 3 models

1 95x9 h 147mm ~80 gr

2 103x9 h 150mm ~80 gr

3 100x9 h 123mm ~80 gr



Le Sfere Spheres



Stampi Policarbonato

Polycarbonate moulds



Cod. MA5003
45 half spheres
Ø 20mm ~3 gr



Cod. MA5000
24 half spheres
Ø 30mm ~4 gr



Cod. MA5001
8 half spheres
Ø 50mm ~15 gr



Cod. MA5002
2 half spheres
Ø 100mm ~90 gr

Stampi Polietilene

Polyethylene moulds



Kit 6 Stampi - Moulds
Cod. 20SF001

- Ø 100 mm - prod 1 pc
- Ø 130 mm - prod 1 pc
- Ø 140 mm - prod 1 pc
- Ø 150 mm - prod 1 pc
- Ø 175 mm - prod 1 pc
- Ø 200 mm - prod 1 pc

Kit 4 Stampi - Moulds
Cod. 20SF002

- Ø 50 mm - prod 6 pcs
- Ø 65 mm - prod 4 pcs
- Ø 75 mm - prod 4 pcs
- Ø 90 mm - prod 2 pcs



Le Decorazioni Decorations

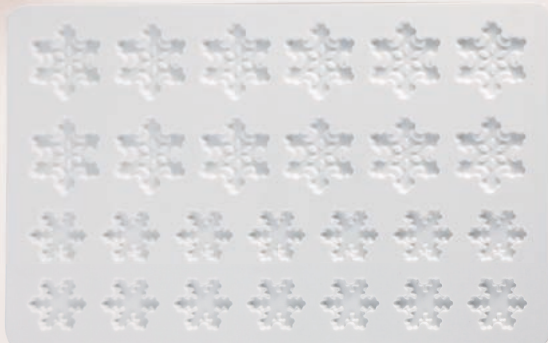
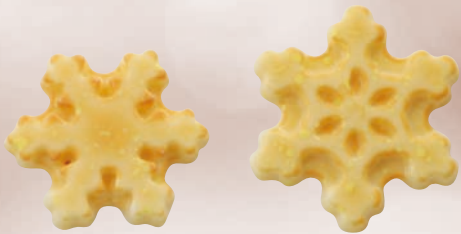


Little star

Cod. CHASIL29
Silicone mat
60 pcs - Ø 26mm
Thickness 1,5mm

Star

Cod. CHASIL30
Silicone mat
42 pcs - Ø 34mm
Thickness 1,5mm



Fiocchi di neve - Snowflakes

Cod. 20-D029

Polycarbonate mould

14 pcs Ø30 h 4mm ~ 1gr

12 pcs Ø40 h 4mm ~ 2gr



Rettangoli - Rectangular

Cod. CHASIL19

32x120 mm

12 pcs

Oblung - Oblong

Cod. CHASIL27

125x25 mm

18 pcs

Cod. CHASIL20

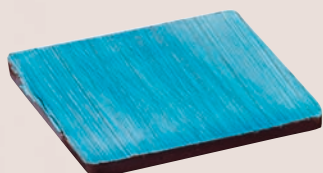
132x32 mm

10 pcs

Cod. CHASIL28

60x18 mm

36 pcs



Quadrato - Square

Cod. CHASIL23

25x25 mm

63 pcs

Cod. CHASIL24

37,5x37,5 mm

30 pcs

Cod. CHASIL25

60x60 mm

12 pcs



Foglie - Leaves

Cod. CHASIL22

75x33 mm

25 pcs



Tondo - Round

Cod. CHASIL21

Ø20 mm

99 pcs

Cod. CHASIL26

Ø62,5 mm

12 pcs

Pandoro & Panettone

Traditional italian cake



Pandoro

Cod. MAC412S
Thermoformed plastic
Ø92 h 85mm ~85 gr



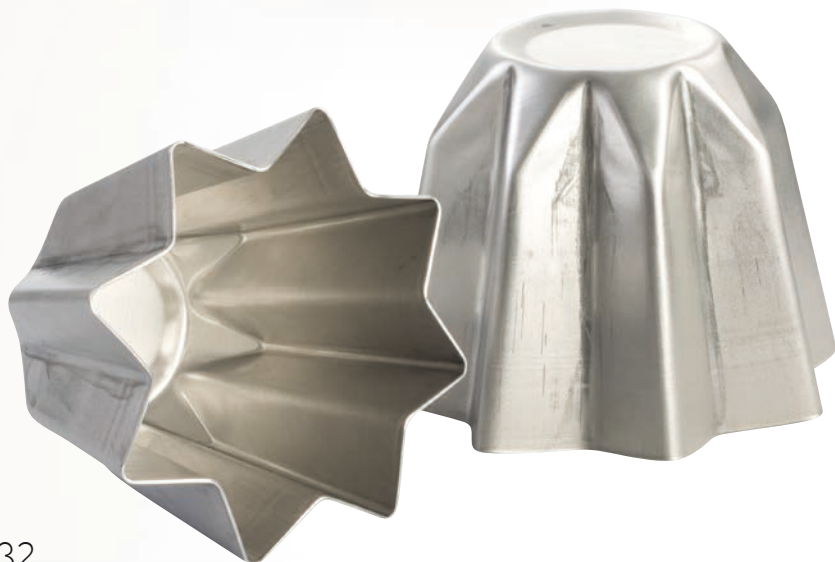
Panettone

Cod. MAC413S
Thermoformed plastic
Ø77 h 85mm ~80 gr



Pandoro (Praline)

Cod. MA1990
Polycarbonate mould
Ø30 h 25mm ~ 10gr
prod: 24 pcs



Stampi pandoro in alluminio **Aluminium pandoro mould**

100 gr
Cod. 30SP0100

250 gr
Cod. 30SP0250

500 gr
Cod. 30SP0500

750 gr
Cod. 30SP0750

1000 gr
Cod. 30SP1000



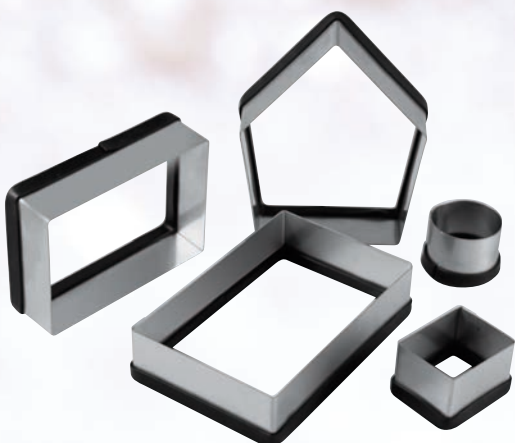
Orsetto sorpresa - Surprise bear

Cod. MAC408S
Thermoformed plastic
63x54 h101mm



Tenero orsetto - Tender bear

Cod. MAC409S
Thermoformed plastic
67x54 h105mm



Gingerbread House Cutter

Cod. 30CH001
120x138 h 140mm



Christmas Spheres



Sphere 3

Cod. 20SF003
Thermoformed plastic
Ø 60mm ~ 40 gr
2 Moulds - Prod. 6 pcs



Sphere 4

Cod. 20SF004
Thermoformed plastic
Ø 60mm ~ 40 gr
2 Moulds - Prod. 6 pcs



Sphere 5

Cod. 20SF005
Thermoformed plastic
Ø 60mm ~ 40 gr
2 Moulds - Prod. 6 pcs



Sphere 6

Cod. 20SF006
Thermoformed plastic
Ø 60mm ~ 40 gr
2 Moulds - Prod. 6 pcs

Chocolate lollipop moulds

Cod. 20L005

Thermoformed plastic

Albero - Tree: 70x76 h9 mm - 34 gr approx

Stella - Star: 77x74 h9 mm - 31 gr approx

Prod. 8 pcs



Buone Feste tag

Cod. 23026

Thermoformed plastic

52x54 h2mm

Prod. 8 pcs



Merry Christmas tag

Cod. 23025

Thermoformed plastic

66x52 h2mm

Prod. 8 pcs



Halloween



New

Little Pumpkin (Praline)

Cod. MA1992
Polycarbonate mould
34x31 h 15mm ~ 9+9gr
Cap. 12+12 pcs



3D Pumpkin

Cod. MAC324S
Thermoformed plastic
52x54 h 132mm ~140gr



Halloween tag

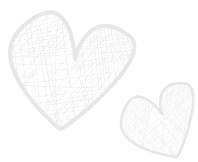
Cod. 23027
Thermoformed plastic
64x37 h2mm - Prod. 8 pcs



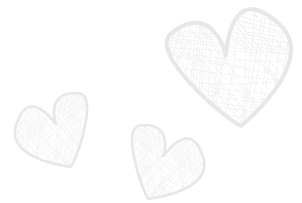
Pumpkin & Skull Lollipops

Cod. 20L006
Thermoformed plastic - Cap. 8 pcs
Zucca - Pumpkin: 69x70 h9 mm ~33gr - 4 pcs
Teschio - Skull: 53x70 h9 mm ~32gr - 4 pcs





Be my Valentine



Toy Soldier

Cod. MAC407S
Thermoformed plastic
1 pc 40x34 h150mm



Princess

Cod. MAC411S
Thermoformed plastic
1 pc 72x72 h125mm



Chocolate lollipop moulds

Cod. 20L004
Thermoformed plastic
Cap. 8 pcs ~ 34 gr - 68x65 h9 mm



Heart case
 Cod. 30SM050
 95x90 h50mm



Rose case
 Cod. 30SM049
 Ø73 h60mm

Cake Rings

Cod. 18H4X17
 175x180 h 40 mm

Cod. 18H4X20
 200x206 h 40 mm

Cod. 18H4X26
 260x268 h 40 mm



Diamond

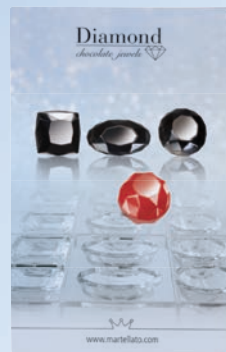
chocolate jewels 





*Stampi in policarbonato
per creare preziose praline di cioccolato*

*Polycarbonate moulds
to create precious pralines*

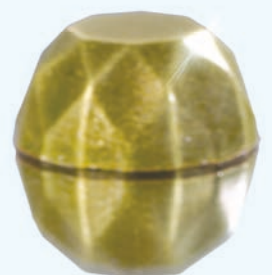
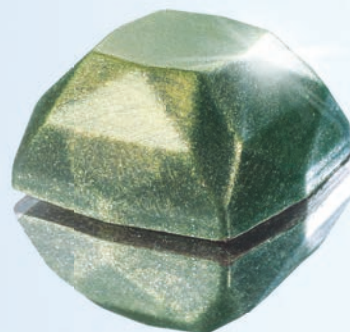
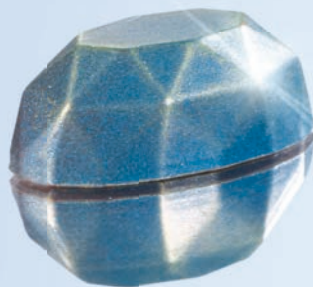
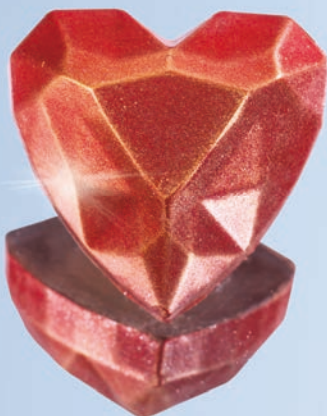


Heart

Cod. MA1993
Polycarbonate mould
33x33 h 15mm ~ 10gr
Cap. 24 pcs

Jems

Cod. MA1994
Polycarbonate mould
6 square - 30x30 h 15mm ~ 11gr
6 oval - 42x24 h 15mm ~ 10gr
6 round - Ø32 h 15mm ~ 10gr



choco and the City



Il giro del mondo con il cioccolato. Le 8 più famose città del pianeta si incontrano negli stampi in policarbonato per dare vita a tavolette, snack e napolitain dedicate a chi ama viaggiare. Assaporando la Tour Eiffel o il Colosseo riprodotti in cioccolato si potrà viaggiare con la fantasia immaginando le luci delle città.

All around the World thanks to chocolate. The 8 most famous cities on the planet meet in polycarbonate moulds to create bars, snacks and napolitain dedicated to those who love travelling. Savoring the Tour Eiffel or the Colosseum reproduced in chocolate you can travel with fantasy, imagining the city lights.



choco and the City

TAVOLETTE - BARS

Cod. **MA2011**
3 pcs 76x150 h 7 mm
~ 80 gr



NAPOLITAIN

Cod. **MA6006**
8x3 pcs 34x34 h 4 mm
~ 4 gr

SNACK

Cod. **MA1919**
3x2 pcs 113x39 h 10 mm
~ 45 gr



Cod. **MASK300**



Cod. **MASK301**



Cod. **MASK302**



Cod. **MASK303**



Cod. **MASK304**



Cod. **MASK305**



Cod. **MASK306**



Cod. **MASK307**

Stencil in plastica - Plastic Stencil
Image Ø 140 mm



Le Praline



Cod. MA1982
28 pcs
28x28 h16mm
~ 11gr



Cod. MA1983
28 pcs
24x24 h18mm
~ 10gr



Cod. MA1984
15 pcs
40x42 h16mm
~ 10gr



Cod. MA1985
20 pcs
41x24 h20mm
~ 10gr



Cod. MA1986
28 pcs
30x30 h11mm
~ 11gr



Cod. MA1987
24 pcs
35x23 h17mm
~ 10gr



Cod. MA1970
30 pcs
40x18 h15mm
~ 9gr



Cod. MA1971
30 pcs
40x18 h16mm
~ 8gr



Cod. MA1969
30 pcs
40x20 h18mm
~ 8gr



Cod. MA1988
24 pcs
30x30 h8mm
~ 8gr



Cod. MA1989
24 pcs
ø35 h8mm
~ 8gr



CHOCO

Style

Tavolette, Snack, Napolitain



Una gamma completa di stampi policarbonato per tavolette, snack e napolitain coordinati fra di loro. Grazie alle geometrie che li caratterizzano, i coordinati offrono interessanti possibilità di decorazione, creando raffinate proposte per ingolosire i clienti amanti dello style.

Martellato presents a complete range of polycarbonate moulds for bars, snacks and napolitain coordinated among themselves. Due to the geometries that characterize them they offer interesting possibilities for creating refined decoration proposals to tempt even the most demanding customers.

Cod. **MA2009**
3 pcs 138x72 h11mm

80 gr



Cod. **MA6002**
20 pcs 42x25 h6mm

4 gr



Cod. **MA1915**
8 pcs 123x27 h12mm

30 gr



Cod. **MA2008**
3 pcs 117x71 h13mm

80 gr



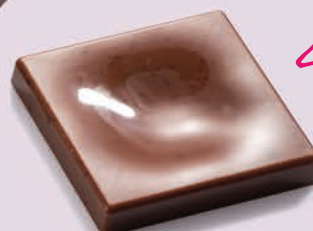
Cod. **MA1914**
8 pcs 100x26 h16mm

30 gr



Cod. **MA6001**
24 pcs 31x31 h4,5mm

4 gr





Cod. MA2010
3 pcs 132x68 h11mm

80GR



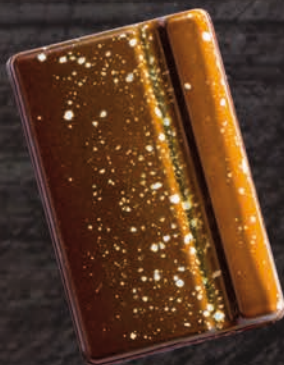
Cod. MA1917
8 pcs 115x24 h15mm

30GR



Cod. MA1916
8 pcs 100x29 h14mm

30GR



Cod. MA6004
20 pcs 42x27 h5mm

4GR



Cod. MA6003
15 pcs Ø39 h4,5mm

4GR

PLAY WITH CHOCOLATE

Cod. **MA6005**
20 pcs 45x23 h6mm

4GR



Cod. **MA1918**
12 pcs 81x27 h15mm

30GR



POLYCARBONATE
MOULDS

Per Lei For Her

My sweet bag

cod. 20BA01
Thermoformed plastic
119x52 h126
2 Moulds - Prod. 2pcs ~190gr

Eau de Chocolat

cod. 20PA01
Thermoformed plastic
60x31 h92mm
4 Moulds - Prod. 4 pcs ~90gr



**Nuovo packaging
Più produttività!**

**New packaging
More productivity!**

Per Lui For Him



Mr. Papillon

cod. 20PP01
Thermoformed plastic
120x52 h13mm
4 Moulds - Prod. 12 pcs ~55gr



Soccer Ball

cod. MAC323S
Thermoformed plastic
Ø120 mm
1 Mould



Football Boot

cod. MAC322S
Thermoformed plastic
195x60 h 80 mm
1 Mould

Coffee time



Big size

Tazzine - Cups

Cod. MA1951
Polycarbonate mould
55x69 h 34mm ~20 gr
Cap. 7 pcs

Piattini - Saucers

Cod. MA1952
Polycarbonate mould
Ø81 h 8mm ~10 gr
Cap. 3 pcs

Cucchiaini - Spoons

Cod. MA3006
Polycarbonate mould
92x26 h 7mm ~6 gr
Cap. 13 pcs

Small size

Tazzine - Cups

Cod. MA1953
Polycarbonate mould
47x59 h 30mm ~17 gr
Cap. 7 pcs

Piattini - Saucers

Cod. MA1954
Polycarbonate mould
Ø67 h 6,5mm ~9 gr
Cap. 5 pcs

MINI
Choco Froll

Cod. 20GU501
Cap. 15 pcs
Misura - Size: Ø40 h18,5 mm

Cod. 20GU502
Cap. 12 pcs
Misura - Size: 44x55 h23 mm



LETTERS
AND
NUMBERS
1 2 3 4 5 6 7 8 9



lettere e numeri
Cod. MA3005
Polycarbonate mould
h30mm

Realizzato in materiale plastico termoresistente, con vasca e coperchio removibili in acciaio inox e sonda termica per la regolazione della temperatura del cioccolato. La scheda elettronica gestisce la resistenza interna, per ottimizzare il raggiungimento del risultato richiesto, e rilevare la temperatura del cioccolato tramite la sonda esterna, per consentire un più rapido e preciso scioglimento del cioccolato. Il pannello frontale fornisce suggerimenti per il temperaggio, regolabile manualmente o seguendo i 3 programmi differenti in base al tipo di cioccolato: bianco, al latte e fondente. Le indicazioni del display aiutano l'operatore a completare le fasi del temperaggio e del mantenimento del cioccolato.

DigitalMeltinChoc

MADE IN ITALY

Made from heat-resistant plastic, they come with a removable stainless-steel bowl and lid and a temperature sensor to regulate the temperature of the chocolate. The circuit board controls the internal temperature to make sure you get the best results, and detects the external temperature of the chocolate via the temperature sensor to help you melt the chocolate quicker and more precisely. The front panel has temperature control suggestions, which can be regulated manually or by following the 3 different programmes based on the kind of chocolate you use: white, milk or dark. The indications on the display help you to control the temperature and melt the chocolate.



Vasca e coperchio in acciaio inox
Stainless steel bowl and lid

Sonda termica
Temperature sensor

Scheda elettronica
Circuit boards

3 programmi selezionabili
3 different programmes

Temperatura costante ed omogenea
Constant and homogenous temperature

Rapido scioglimento
Quick melting

Indicatori sonori
Sound indicator



Cap. **3,6** Lt
Cod. *MCD101*
24x40 h13,5cm
Vasca - Basin: 18x32,5 h10cm



Cap. **6** Lt
Cod. *MCD102*
33x40 h13,5cm
Vasca - Basin: 26,5x32 h10cm



Cap. **9** Lt
Cod. *MCD103*
39,5x45 h13,5cm
Vasca - Basin: 32x35,3 h10cm



Cap. **13,7** Lt
Cod. *MCD104*
39,5x62 h13,5cm
Vasca - Basin: 32,5x53 h10cm

Monouso Disposabile



ZEN

Ciotola - Bowl

Cap. **460** ml

Cod. ZENB000 - transparent

Cod. ZENB001 - white

Cod. ZENB002 - black

100x118 h70 mm

Pack 50 pcs

Piattino - Coperchio

Small plate - Lid

Cod. ZENB000C - transparent

100x118 h6 mm

Pack 50 pcs



ZEN

Piatto - Vassoio

Plate - Tray

110x245 h18 mm

Pack 50 pcs

Cod. ZENTR00 - transparent

Cod. ZENTR01 - white

Cod. ZENTR02 - black



PENTA

Cap. **120** ml

Cod. **PMOPE001**

Ø72 h56 mm

Pack 100 pcs



Cod. **PMOPE0012400**

Pack 24 pcs



CUBÒ

Cap. **58** ml

Cod. **PMOCU004**

50x50 h55 mm

Pack 100 pcs



Cod. **PMOCU002/C**
Transparent Lids
Pack 100 pcs



Cod. **PMOCU0041600**
Pack 16 pcs
Master: 24 box



Monouso Disposable

LOVE

Cap. **100 ml**
Cod. **PMOLO001**
73x64 h52 mm
Pack 100 pcs



Cod. **PMOLO001/C**
Transparent Lids
Pack 100 pcs



Cod. **PMOLO0011800**
Pack 18 pcs



BUCKET

Cap. **210ml**
Cod. **PMOTO005**
Ø78 h 57mm
Pack 100 pcs



Cod. **PMOTO005/C**
Transparent Lids
Pack 100 pcs

Cod. **PMOTO0051200**
Pack 12 pcs



TONDO

Piattino - Small plate

85x96 h20 mm - Pack 100 pcs

Cod. *PL00100* - transparent

Cod. *PL00101* - white

Cod. *PL00102* - black



QUADRO

Piattino - Small plate

80x97 h20 mm - Pack 100 pcs

Cod. *PL00200* - transparent

Cod. *PL00201* - white

Cod. *PL00202* - black

WAVE

Cap. **200ml**

Cod. *PMOCE003*

100x70 h 82mm

Pack 100 pcs

Cod. *PMOCE0031000*

Pack 10 pcs



VELA

Cap. **200ml**

Cod. *PMOCO015*

90x83 h 74mm

Pack 100 pcs

Cod. *PMOCO0151800*

Pack 18 pcs



Bocchette per decorazioni

Decorations piping tips



Cod. **BX0026**
Size: Ø18 h 36 mm
Top: 25 mm



Cod. **BX0027**
Size: Ø18 h 36 mm
Top: 25 mm



Cod. **BX0039**
Size: Ø18 h 32 mm
Top: Ø5 mm



Cod. **BX0043**
Size: Ø18 h 28 mm
Top: 108 mfm



Cod. **BX0031**
Size: Ø18 h 34 mm
Top: Ø4 mm



Cod. **BX0032**
Size: Ø18 h 34 mm
Top: Ø2 mm



Cod. **BX0033**
Size: Ø18 h 33 mm
Top: Ø4 mm



Cod. **BX0034**
Size: Ø18 h 33 mm
Top: Ø5 mm



Cod. **BX0040**
Size: Ø18 h 30 mm
Top: Ø6 mm



Cod. **BX0035**
Size: Ø18 h 35 mm
Top: 4 mm



Cod. **BX0036**
Size: Ø18 h 35 mm
Top: 6 mm



Cod. **BX0037**
Size: Ø18 h 33 mm
Top: 8 mm



Cod. **BX0041**
Size: Ø18 h 34 mm
Top: 10 mm



Cod. **BX0044**
Size: Ø18 h 28 mm
Top: Ø8 mm



Cod. **BX0045**
Size: Ø18 h 31 mm
Top: Ø7 mm



Cod. **BX0046**
Size: Ø18 h 30 mm
Top: Ø10 mm



Cod. **BX0048**
Size: Ø18 h 30 mm
Top: Ø10 mm



Cod. **BX0042**
Size: Ø18 h 30 mm
Top: Ø6 mm



Cod. **BX0049**
Size: Ø18 h 30 mm
Top: Ø7 mm



Cod. **BX0038**
Size: Ø18 h 28 mm
Top: Ø8 mm



Cod. **BX0047**
Size: Ø18 h 26 mm
Top: Ø9 mm



Cod. **BX0050**
Size: Ø18 h 24 mm
Top: Ø10 mm



Cod. **BX0028**
Size: Ø18 h 37 mm
Top: Ø 0,4 mm



Cod. **BX0029**
Size: Ø18 h 35 mm
Top: Ø 0,6 mm



Cod. **BX0030**
Size: Ø18 h 36 mm
Top: Ø 0,9 mm

Floral piping tips



Cod. **BX0001**
Size: Ø37 h 42 mm
Top: Ø23 mm



Cod. **BX0002**
Size: Ø37 h 42 mm
Top: Ø23 mm



Cod. **BX0004**
Size: Ø37 h 42 mm
Top: Ø25 mm



Cod. **BX0006**
Size: Ø37 h 42 mm
Top: Ø25 mm



Cod. **BX0008**
Size: Ø37 h 42 mm
Top: Ø25 mm



Cod. **BX0009**
Size: Ø37 h 42 mm
Top: Ø23 mm



Cod. **BX0011**
Size: Ø37 h 42 mm
Top: Ø23 mm



Cod. **BX0012**
Size: Ø37 h 42 mm
Top: Ø23 mm



Cod. **BX0014**
Size: Ø37 h 42 mm
Top: Ø25 mm



Cod. **BX0016**
Size: Ø37 h 42 mm
Top: Ø25 mm



Cod. **BX0017**
Size: Ø37 h 42 mm
Top: Ø25 mm



Cod. **BX0023**
Size: Ø37 h 42 mm
Top: Ø25 mm



Cod. **BX0051**
Size: Ø35 h 38 mm
Top: Ø25 mm



Cod. **BX0052**
Size: Ø35 h 38 mm
Top: Ø25 mm



Cod. **BX0053**
Size: Ø35 h 38 mm
Top: Ø25 mm



Cod. **BX0054**
Size: Ø37 h 42 mm
Top: Ø25 mm



Cod. **BX0055**
Size: Ø37 h 42 mm
Top: Ø25 mm



Cod. **BX0056**
Size: Ø37 h 42 mm
Top: Ø25 mm



Cod. **BX0057**
Size: Ø37 h 42 mm
Top: Ø25 mm



Cod. **BX0058**
Size: Ø37 h 42 mm
Top: Ø25 mm



Cod. **BX0059**
Size: Ø37 h 42 mm
Top: Ø25 mm



Cod. **BX0060**
Size: Ø37 h 42 mm
Top: Ø25 mm



Cod. **BX0061**
Size: Ø37 h 42 mm
Top: Ø25 mm

Floral Box

Cod. **BOS12FLO**
Box 12 pcs



Sphere Ball tips



Cod. **BX0100**
Size: Ø32 h 60 mm
Top: Ø22 mm



Cod. **BX0101**
Size: Ø32 h 57 mm
Top: Ø22 mm



Cod. **BX0102**
Size: Ø32 h 57 mm
Top: Ø22 mm



Cod. **BX0103**
Size: Ø32 h 57 mm
Top: Ø22 mm



Cod. **BX0104**
Size: Ø32 h 57 mm
Top: Ø22 mm



Cod. **BXB01**
Size: Ø55 h 60 mm
Top: Ø31 mm
pack 1 pc



Cod. **BXB02**
Size: Ø55 h 56 mm
Top: Ø31 mm
pack 1 pc

Special Adapters

Bi
& Tri
COLOR



Cod. 40-WA010 - Pack 2 pcs
Adattatori per decorazioni a due o tre colori.
Adapters for decorations with two or three colours.
Adatto a bocchette/Suitable for piping tips: Ø30 h 50 mm



Per bocchette a sfera e floreali
For sphere ball and floreal tips



Cod. 50AD004
Ideali per:
FLOREAL e SPHERE BALL



Cod. ESPOB60
Size: 515x315 h210mm

Espositore in plexiglass con crowner per 60 bocchette
Plexiglass display with crowner for 60 piping tips



Cod. ESPOB032
Size: 310x100 h390mm

Portabocchette in plexiglass per 32 pz
Plexiglass piping tips holder for 32 pcs

Coltelleria *New* Knives

- Lama in acciaio inox temperato
- Manico in plastica antiscivolo
- Confezione blister
- Tempered st. steel blade
- Anti-slip nylon handle
- Blister packaging

MADE IN ITALY



Spelucchino 9
Paring 9

Cod. 50COL01
Lama - Blade: 90mm



Pasticceria 30
Pastry 30

Cod. 50COL02
Lama - Blade: 300mm



Pasticceria 36
Pastry 36

Cod. 50COL03
Lama - Blade: 360mm



Cuoco 26
Chef 26

Cod. 50COL04
Lama - Blade: 260mm



Cuoco 30
Chef 30

Cod. 50COL05
Lama - Blade: 300mm



Salati e formaggi 26
Salty and cheese 26

Cod. 50COL06
Lama - Blade: 260mm



Pane e panettone 25
Bread and panettone 25

Cod. 50COL07
Lama - Blade: 250mm

Attrezzature Equipment

Termometro digitale Digital thermometer

Cod. 50T002
-50°C ~ 420°C / -58°F ~ 788°F



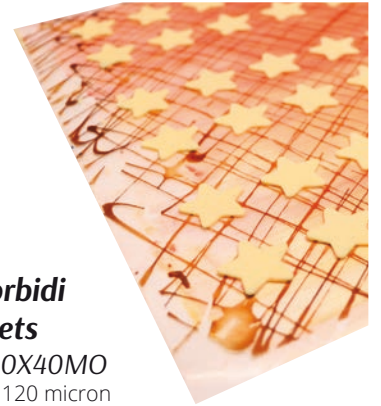
Forbici da zucchero Sugar scissors

Cod. 50F001



New Fogli morbidi Soft sheets

Cod. NSA60X40MO
60x40 cm - 120 micron
pack. 50 pz



Spatola Gomma - Rubber Spatula

New

Cod. 50GO275
Misure - Size: 275mm



Spatole Angolari - Angular Spatulas

New

Cod. 50SPANG09
Manico - Handle: 120mm
Lama - Blade: 20x90mm

Cod. 50SPANG20
Manico - Handle: 130mm
Lama - Blade: 37x205mm

Cod. 50SPANG16
Manico - Handle: 130mm
Lama - Blade: 29x160mm



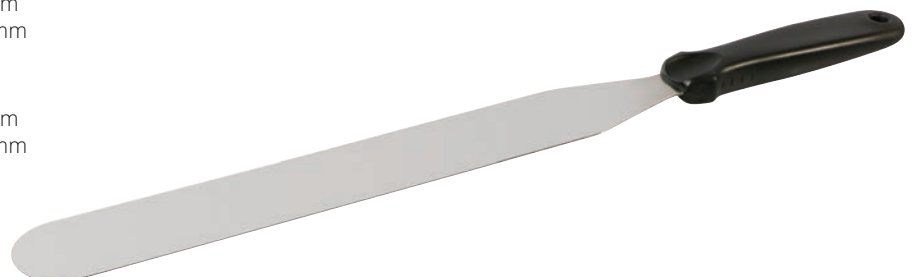
Spatole - Spatulas

Cod. 50SPA15
Manico - Handle: 130mm
Lama - Blade: 27x155mm

Cod. 50SPA25
Manico - Handle: 130mm
Lama - Blade: 37x254mm

Cod. 50SPA20
Manico - Handle: 130mm
Lama - Blade: 29x200mm

Cod. 50SPA30
Manico - Handle: 130mm
Lama - Blade: 45x308mm



Attrezzature Equipment



Eclair Silicone mat

Cod. 30TE3001R

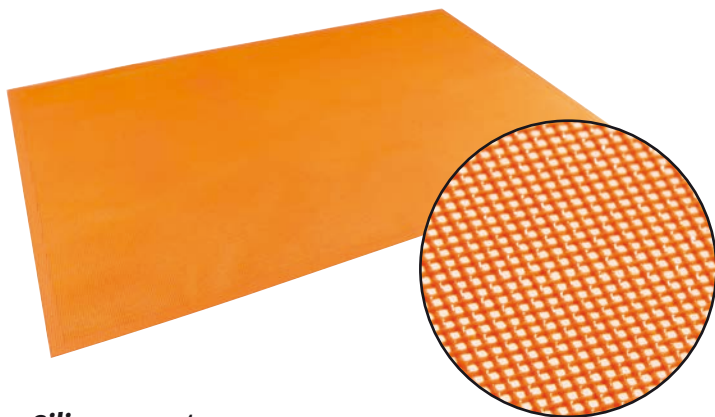
Per la cottura di Eclairs 25x125mm
Suitable for éclairs 25x125mm baking.
30x40 cm



Mini Eclair Silicone mat

Cod. 30TE3002R

Per la cottura dei Mini Eclairs 18x60mm
Suitable for mini éclairs 18x60mm baking.
30x40 cm



Silicone mat

Cod. SILICOPAT11

Microforato - Perforated
60x40cm



Dima in Plastica - Plastic template

Cod. 51EC2512

for éclairs 25x125 mm
59x39 cm
Non adatta alla cottura - Not suitable for cooking



Caraffa

Cod. CFTRA6
6 Lt



Raschia - Scraper

Cod. 50RAS1
Size: 130X100 mm

Cod. 50RAS2
Size: 175X100 mm

Martellato srl, ai sensi della Legislazione Comunitaria vigente:

Regolamento CE n. 1935/2004
Materiali e oggetti destinati a venire a contatto con i prodotti alimentari.

Regolamento UE n. 10/2011
Riguardante i materiali e gli oggetti di materia plastica destinati a venire a contatto con i prodotti alimentari.

Regolamento CE n. 2023/2006
Buone pratiche di fabbricazione (GMP) dei materiali e degli oggetti destinati a venire a contatto con i prodotti alimentari.

E alla seguente Legislazione Nazionale vigente:

D.M. Italiano 21/03/1973 e successive modifiche
Disciplina igienica degli imballaggi,
recipienti, utensili, destinati a venire a contatto
con le sostanze alimentari o con sostanze d'uso personale.

D.P.R. 777/82 e successivi aggiornamenti e modifiche

Ha emesso uno specifico Capitolato che obbliga i suoi fornitori al rispetto di determinate precauzioni igieniche durante la fabbricazione, lavorazione e imballo degli articoli Monouso elencati nel presente catalogo. Per tutti gli altri articoli la Martellato srl richiede all'utilizzatore la precauzione di lavarli accuratamente con acqua e detergente neutro prima dell'uso.

Martellato srl, accordingly to EC laws:

EC Regulation no. 1935/2004
Materials and articles intended to come into contact with food.

EU Regulation no. 10/2011
Regarding the materials and plastic articles
intended to come into contact with food.

EC Regulation no. 2023/2006
Good Manufacturing Practices (GMP) of materials and articles intended to come into contact with food.

And to the following National Legislation in force:

Italian Ministerial Decree 21/03/1973 and subsequent updates and changes
Hygiene regulation for packaging,
containers, utensils, intended to come into contact with food
or with substances for personal use.

Presidential Decree 777/82 and subsequent updates and changes

Issued a specification that requires its suppliers to comply with certain hygienic precautions during manufacture, processing and packaging of the disposable items listed in this catalogue. For all other items Martellato srl asks users to wash thoroughly with water and mild detergent before use, as a precaution.

MARTELLATO si riserva la facoltà di modificare in qualsiasi momento e senza preavviso le caratteristiche tecniche degli articoli presentati in questo catalogo. È vietata la riproduzione, anche parziale, di questo catalogo senza l'autorizzazione di MARTELLATO

MARTELLATO reserves the right to modify at any time without notice the technical specifications of the items in this catalogue. Any reproduction, even partial, of this catalogue without permission is strictly prohibited



CATAI17 - Agosto 2017



Martellato

Martellato Srl - Via Rovigo, 1/B - 35010 Vigonza PD - Italy
tel. +39 049 7800155 - fax +39 049 8087744
martellato@martellato.com - www.martellato.com